


REV	DATE	DRAWN/CHKD	DESCRIPTION	COMPONENT	MATERIAL DESCRIPTION	FINISH DESCRIPTION
1	26JAN2007	LCR	ADDED KEY REMOVAL B & GRAPHICS & STUD LENGTH	DRIVER	DIE CAST ZINC	CHROME PLATE
A	06FEB2007	LCR/RLR	RELEASED	HOUSING	DIE CAST ZINC	CHROME PLATE
B	06JUN2007	LCR/AJH	PRN: P2007-0875	BOTTOM PIN	BRASS	ZINC PLATE
C	28JUN2010	MJS	PRN: P2010-0658	TOP PIN	BRASS	VARIOUS BASED ON LENGTH
D	11JUL2011	ACH/JW	PRN: P2011-0892	SPRING	HEAT TREATED STEEL	NATURAL
				CAM	STEEL	ZINC PLATE, BRIGHT CHROMATE CONV. COATING
				PLUG & PLUG BLANK	DIE CAST ZINC	TRIVALENT CHROMATE CONV COATING
				BAR	STEEL	ZINC PLATE, BRIGHT CHROMATE CONV. COATING
				STOP WASHER	STEEL	ZINC PLATE, BRIGHT CHROMATE CONV. COATING
				LOCKWASHER	STEEL	ZINC PLATE, BRIGHT CHROMATE CONV. COATING
				MOUNTING NUT	DIE CAST ZINC	TRIVALENT CHROMATE CONV COATING
				CAM MOUNTING NUT	STEEL	ZINC PLATE, BRIGHT CHROMATE CONV. COATING
				KEY	BRASS CYLINDER, STEEL HANDLE	NICKEL PLATE

MILLIMETERS

ALL DIMENSIONS WITHOUT TOLERANCES ARE FOR REFERENCE ONLY.



THIRD ANGLE PROJECTION

A3 PAPER SIZE

- NOTES:
- EACH LATCH IS PACKAGED IN A PLASTIC BAG, 100 LATCHES PER BOX. FOR KEYED ALIKE, MOUNTING NUTS, LOCKWASHERS AND KEY SETS ARE BULK PACKAGED, 50 TO A BAG, 100 PER BOX. FOR KEYED DIFFERENTLY THE KEY SETS ARE PACKAGED WITH THE LATCH.
 - PLUGS, PINS, AND SPRINGS ARE INTERNAL TO ASSEMBLY.
 - CAMS ORDERED SEPARATELY.
 - SEE J-PT-T FOR CAM PART NUMBERS.
 - FOR INSTALLATION AND PANEL PREPARATION SEE DRAWING J-PT-1-A.

PART NUMBER: PT-1- C1 - 20 -

HOUSING LENGTHS:

- 1 = 12.7mm
- 2 = 17.5mm
- 3 = 23.8mm
- 4 = 30.5mm
- 5 = 36.5mm

CAM ROTATION ANGLE:

- 01 = 12 - 3 O'CLOCK (CW)
- 09 = 12 - 9 O'CLOCK (CCW)

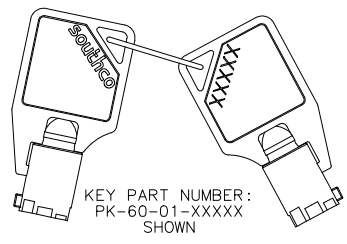
(SEE BELOW)

KEY CODE:

- KA = KEYED ALIKE, CODE T001
- KD = DEYED DIFFERENTLY, CODE T001-T0050
- XXX = SPECIFIC KEY CODE
- 001 = CODE T001

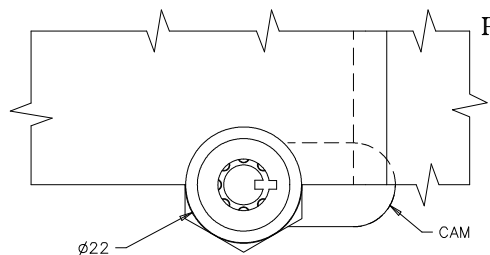
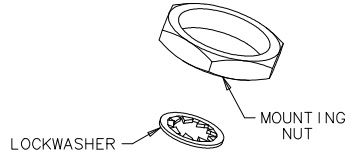
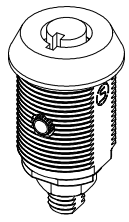
KEY REMOVAL:

- B - LOCKED/UNLOCKED POSITION
- L - LOCKED POSITION ONLY

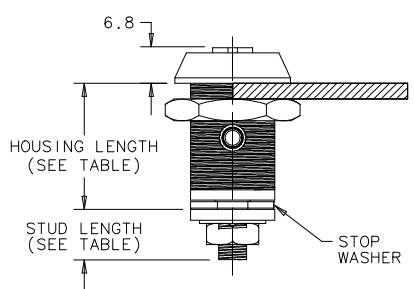
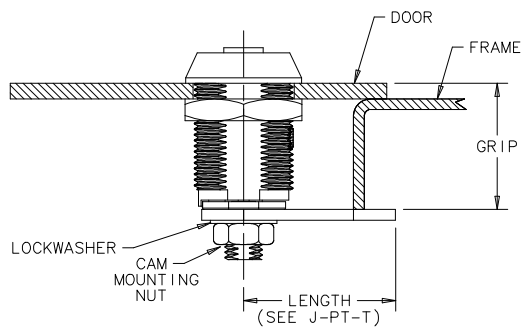
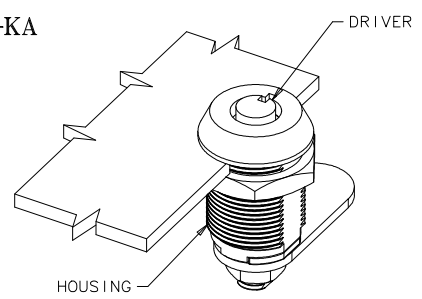


(INCLUDED IN SUB-ASSEMBLY PART NUMBER SHOWN TO RIGHT)

SUBASSEMBLY PART No. PT-1-3C101-20L-KA SHOWN (CAM ORDERED SEPARATELY) SEE J-PT-T FOR CAM PART NUMBERS



PART NUMBER PT-1-3C101-20L-KA SHOWN ASSEMBLED WITH CAM P/N PT-T009 (CAM ORDERED SEPARATELY)



HOUSING LENGTH	STUD LENGTH	
1	12.7	8.9
2	17.5	9.5
3	23.8	9.5
4	30.5	9.5
5	36.5	9.5

DD CAM ROTATION DIRECTION

NOTE: ROTATION DIRECTION IS FROM UNLOCKED TO LOCKED POSITION.

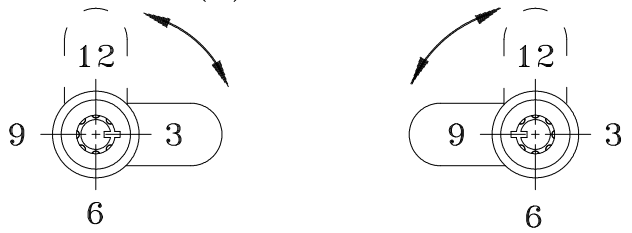
SOLID LINE CAM DEPICTS LOCKED CAM POSITION.

DOTTED LINE CAM DEPICTS UNLOCKED CAM POSITION.

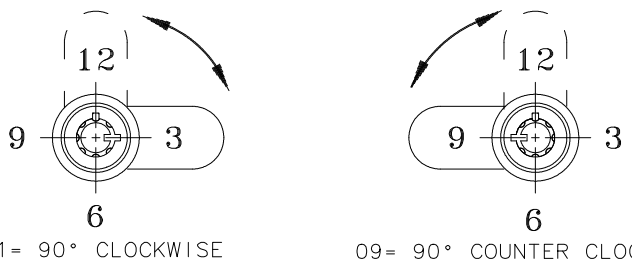
CAMLOCK SHOWN IN LOCKED POSITION.

SEE J-PT-1-B FOR OTHER ROTATION ANGLES.

FOR OPTION "L" - KEY REMOVABLE IN LOCKED (L) POSITION ONLY:



FOR OPTION "B" - KEY REMOVABLE IN BOTH POSITIONS:



PANEL PREPARATION ORIENTATION (SEE J-PT-1-A FOR DIMENSIONS)

