

NOTES:

- ASSEMBLY MT-04-11-24 CONSISTS OF 1 PIN LATCH SUB-ASSEMBLY AND 1 STRIKER PLATE.



PROPRIETARY ITEM - EXCEPT FOR USES EXPRESSLY GRANTED IN WRITING, INFORMATION DISCLOSED HEREON IS CONFIDENTIAL AND ALL RIGHTS, PATENT AND OTHERWISE ARE RESERVED BY SOUTHCO, INC.

MT PIN LATCH WITH STRIKER PLATE

DATE	DRAWN	CHKD	SCALE	DRAWING NUMBER
10JUN2008	CW	MJS	1:1	J-MT-04-11-24

REV	DATE	DRAWN/CHKD	DESCRIPTION	ITEM	PART NUMBER	MATERIAL	FINISH
A	10JUN2008	CW/MJS	INITIAL DWG RELEASE	ASSEMBLY	MT-04-11-24	--	--
B	23MAY2016	CMS/MWD	PRN: P2016-1176	STRIKER PLATE	--	300 SERIES STAINLESS STEEL	PASSIVATED
C	16FEB2017	CMS/MWD	PRN: P2017-0403	PLUNGER	--	300 SERIES STAINLESS STEEL	PASSIVATED
				HOUSING	--	BRASS	NICKEL
				HEX NUT	--	BRASS	NICKEL
				PIN	--	300 SERIES STAINLESS STEEL	PASSIVATED
				RING	--	300 SERIES STAINLESS STEEL	PASSIVATED
				SPRING	--	300 SERIES STAINLESS STEEL	PASSIVATED

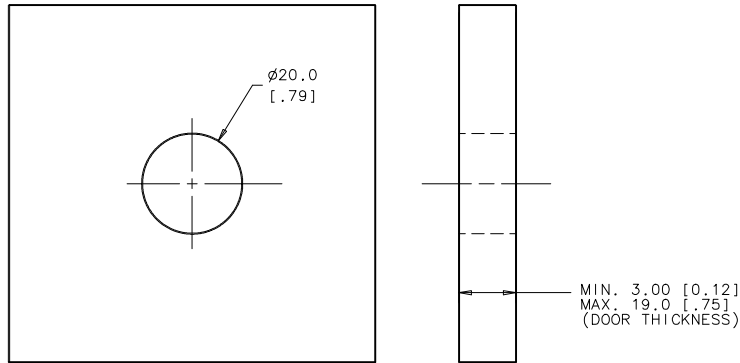
MILLIMETERS [INCHES]

ALL DIMENSIONS WITHOUT TOLERANCES ARE FOR REFERENCE ONLY.

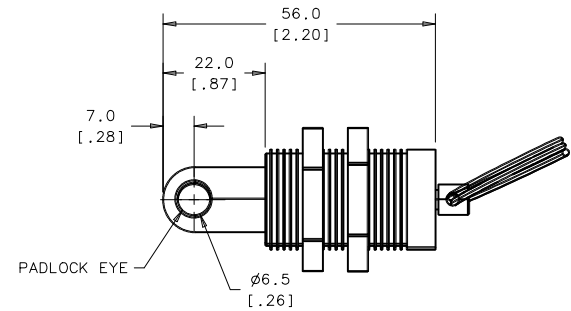
THIRD ANGLE PROJECTION

A3 PAPER SIZE

PANEL PREPARATION



PIN LATCH



STRIKER PLATE

