

REVISION HISTORY			
REV	DATE	BY	DESCRIPTION
H	31OCT2017	RKS/DMS	PRN: P2017-2683

MATERIAL AND FINISH:

LATCH MODULE:

- LOCK ENGINE: BRASS
- DEAD BOLT: BRASS, NICKEL PLATED
- DEAD BOLT McCOY STAR SLIDER: 2348 STAINLESS STEEL
- SPRINGS: 304 STAINLESS STEEL

- FOREND: BRASS, NICKEL PLATED
- MOUNTING SCREWS M4 POZIDRIVE: 316 STAINLESS STEEL
- HANDLE: BRASS, SEE TABLE FOR FINISH
- ESCUTCHEONS, ACCENTS AND PRIVACY KNOB: BRASS, SEE TABLE FOR FINISH
- DRIVEBAR: BRASS
- WASHERS: PA6, WHITE
- SET SCREW 10/32": 316 STAINLESS STEEL

PART NUMBER SYSTEM

MA-01-ABC-XX-YY

DIRECTION
LOCKING OPTION
DOOR THICKNESS
HANDLE
FINISH

HANDLE [XX]

- 01 - NOVA HANDLE
- 02 - PORTOFINO HANDLE

MORE HANDLE OPTIONS AVAILABLE
REFER TO OLIVARI WEBSITE AND
LITERATURE FOR 3-DIGIT HANDLE CODE

**FINISH FOR HANDLES, PRIVACY KNOB,
ESCUTCHEONS AND ACCENTS [YY]**

- 10 - CHROME
- 12 - BRIGHT CHROME WITH SATIN CHROME ACCENT
- 14 - BRIGHT CHROME WITH DIAMOND BRASS ACCENT
- 20 - SATIN CHROME
- 21 - SATIN CHROME WITH BRIGHT CHROME ACCENT
- 40 - DIAMOND BRASS
- 41 - DIAMOND BRASS WITH BRIGHT CHROME ACCENT

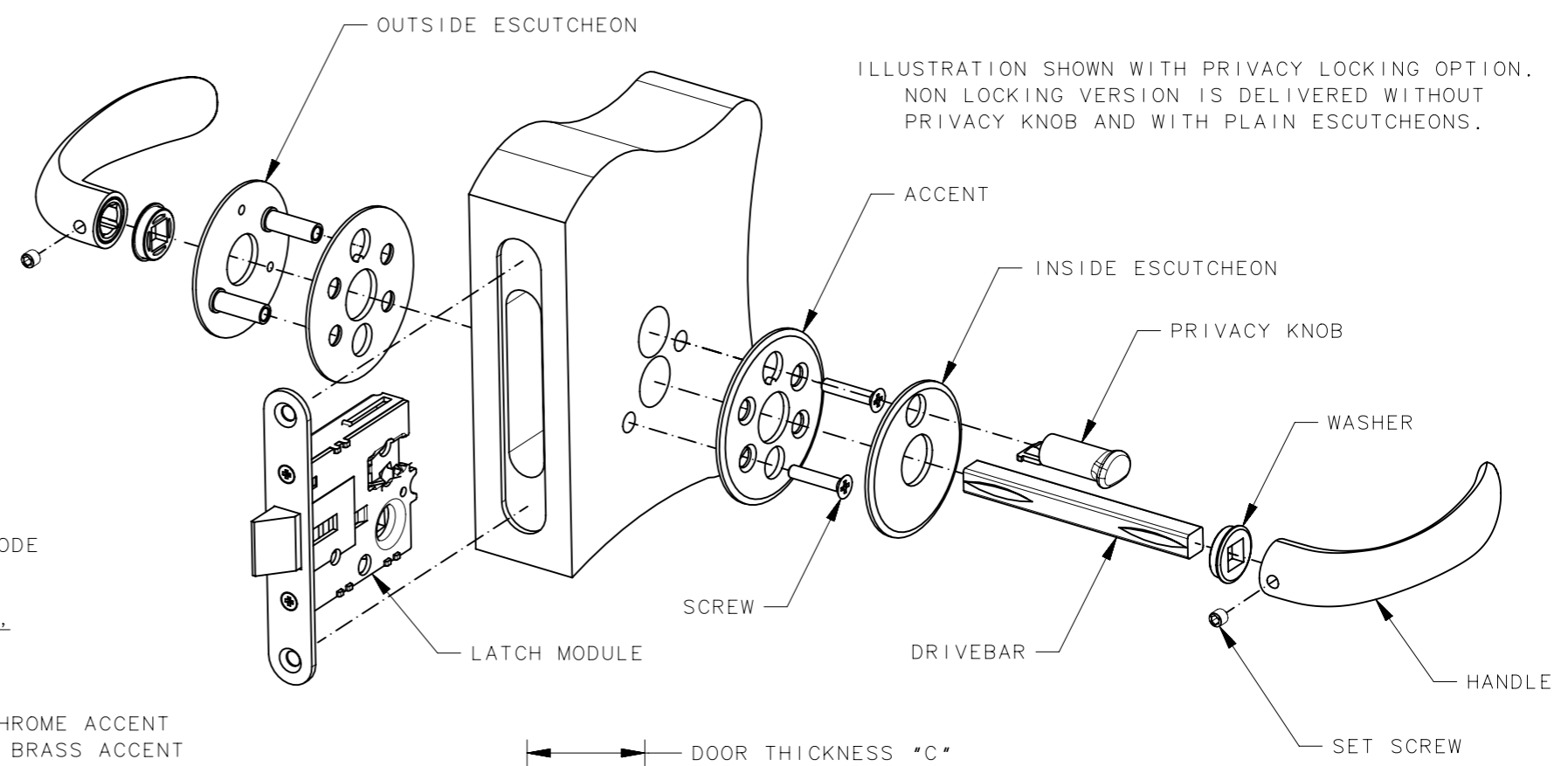


ILLUSTRATION SHOWN WITH PRIVACY LOCKING OPTION.
NON LOCKING VERSION IS DELIVERED WITHOUT
PRIVACY KNOB AND WITH PLAIN ESCUTCHEONS.

DIRECTION [A]

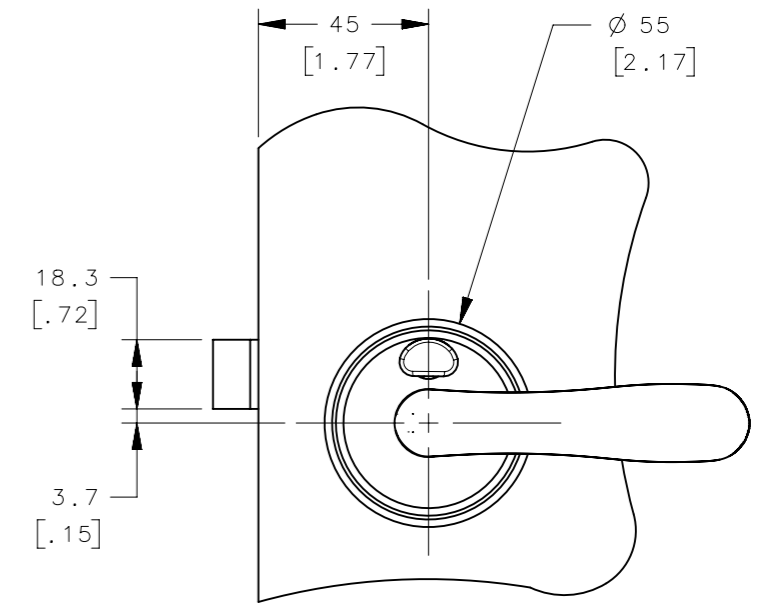
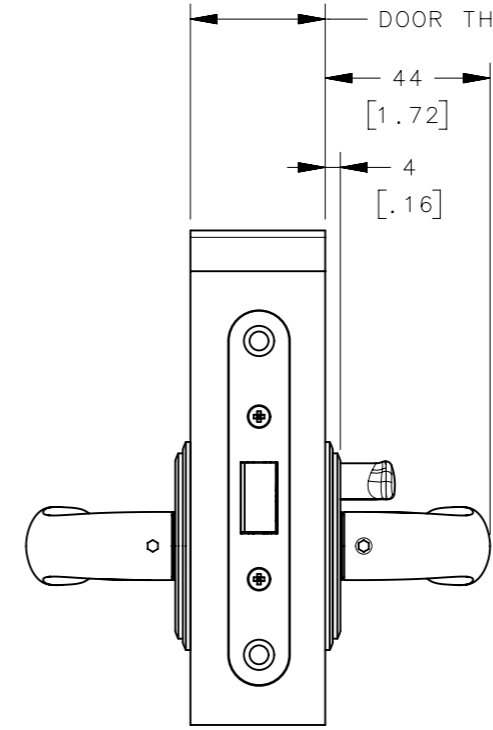
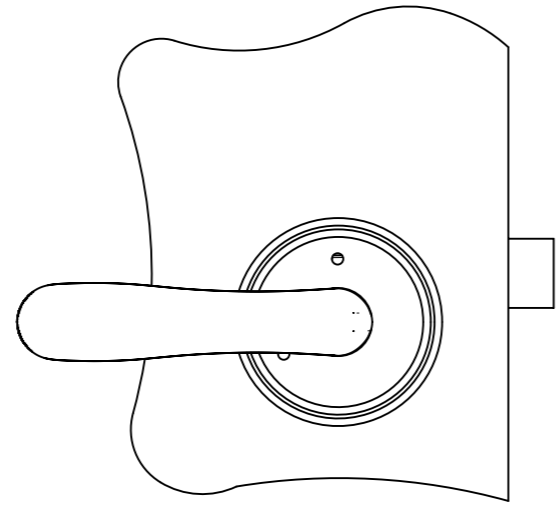
- 2 - RIGHT OUT
- 3 - RIGHT IN
- 4 - LEFT OUT
- 5 - LEFT IN
- 6 - RIGHT OUT/LEFT IN
- 7 - LEFT OUT/RIGHT IN

LOCKING OPTION [B]

- 0 - NON LOCKING (A = 6 OR 7)
- 2 - PRIVACY LOCKING (A = 2 TO 5)

DOOR THICKNESS [C]

- 0 - 22-30mm [7/8" - 1 3/16"]
- 1 - 28-37mm [1 1/8" - 1 1/2"]
- 3 - 22-37mm [7/8" - 1 1/2"]

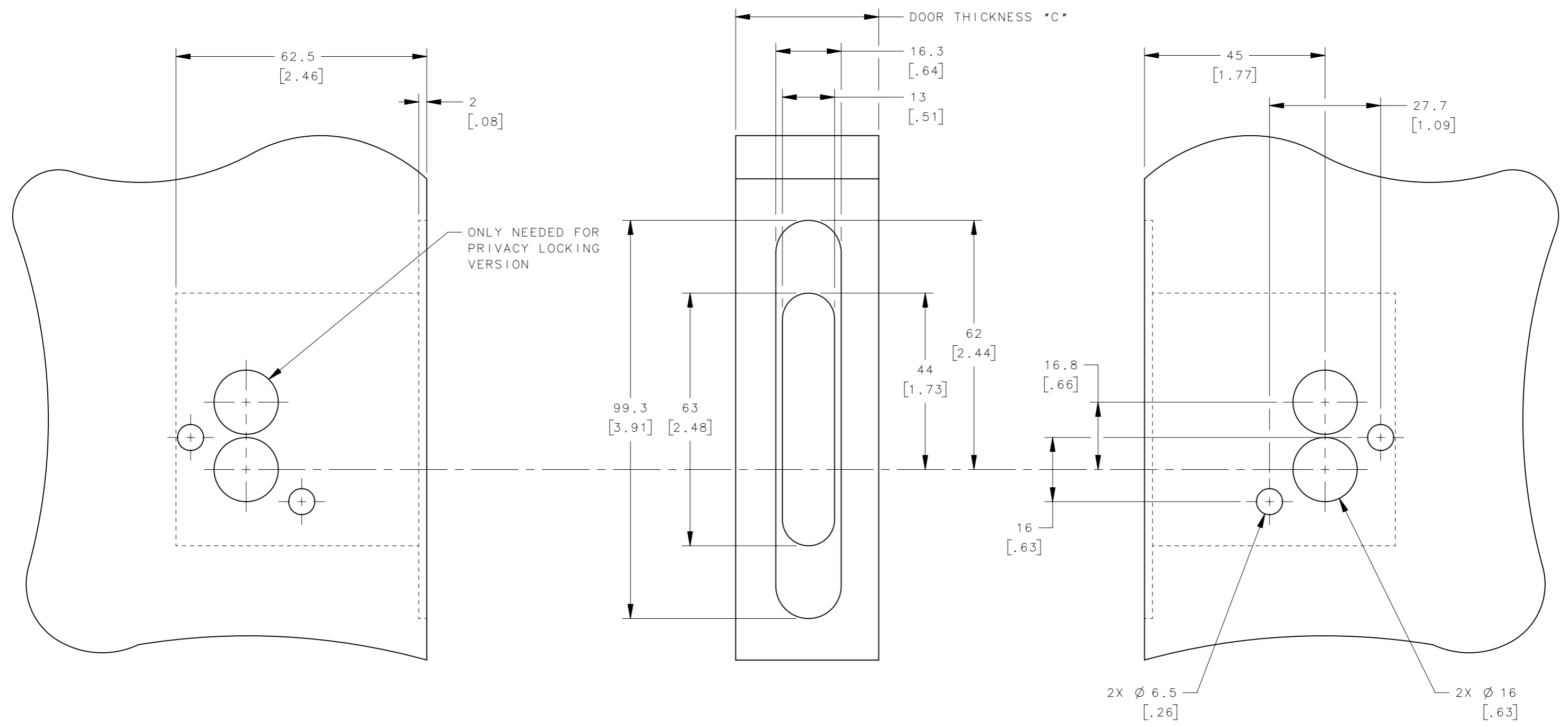


NOTES:

1. DOOR THICKNESS "C", SEE TABLE.
2. FOR PANEL PREPARATION INSTRUCTIONS, SEE DRAWING NUMBER J-MA-01-ABC-XX-YY-2.
3. DRAWING SHOWS NOVA HANDLES.
4. FOR AVAILABLE STRIKERS, SEE H-MC-90-2XX-YY, H-MC-90-3XX-YY AND H-MC-9590.
5. SEE SOUTHCO MARINE HANDBOOK FOR MORE DETAILED INSTALLATION INSTRUCTIONS.

THIRD ANGLE PROJECTION			
MILLIMETERS [IN]			
TOLERANCES UNLESS OTHERWISE NOTED		DESCRIPTION McCOY - SINGLE SPRING BOLT	
ALL DIMENSIONS WITHOUT TOLERANCES ARE FOR REFERENCE ONLY.		SIZE A3	SYSTEM NX
PER ASME Y14.5M-1994		DWG NO. J-MA-01-ABC-XX-YY	DATE 15MAR2012
		SCALE 1:2	SHEET 1 OF 2

REVISION HISTORY			
REV	DATE	BY	DESCRIPTION
H	31OCT2017	RKS/DMS	PRN: P2017-2683



NOTES:
 1. PANEL PREPARATION FOR ASSEMBLIES MA-01-ABC-XX-YY.

THIRD ANGLE PROJECTION			
MILLIMETERS [IN]			
TOLERANCES UNLESS OTHERWISE NOTED		DESCRIPTION McCOY - SINGLE SPRING BOLT PANEL PREPARATION	
ALL DIMENSIONS WITHOUT TOLERANCES ARE FOR REFERENCE ONLY.		SIZE A3	SYSTEM NX
PER ASME Y14.5M-1994		DWG NO. J-MA-01-ABC-XX-YY	DATE 15MAR2012
		DRAWN BY RFA/DTB	SCALE 1:1
		SHEET 2 OF 2	

PROPRIETARY ITEM
 EXCEPT FOR USES EXPRESSLY GRANTED IN WRITING, INFORMATION DISCLOSED HEREON IS CONFIDENTIAL AND ALL RIGHTS, PATENT AND OTHERWISE, ARE RESERVED BY SOUTHCO, INC.