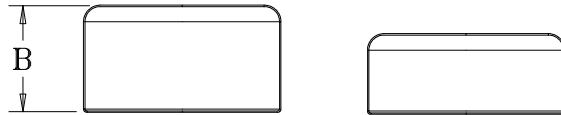
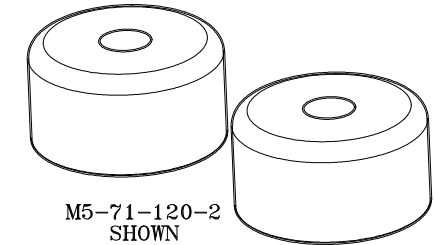
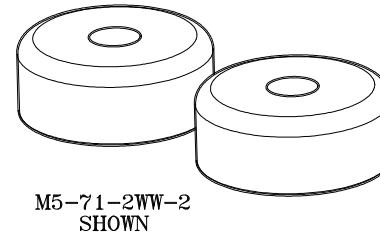
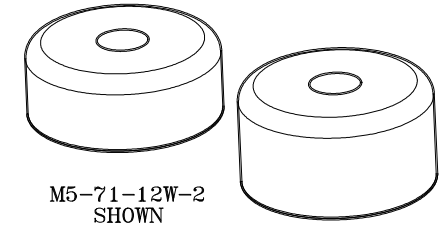
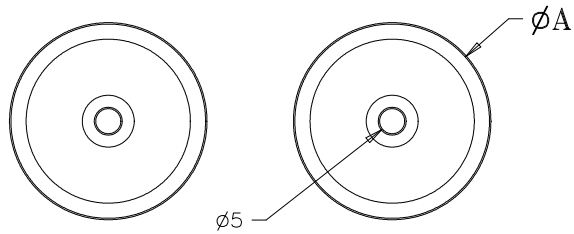


PROPRIETARY ITEM
EXCEPT FOR USES EXPRESSLY GRANTED
IN WRITING, INFORMATION DISCLOSED
HEREON IS CONFIDENTIAL AND ALL
RIGHTS, PATENT AND OTHERWISE,
ARE RESERVED BY SOUTHCO, INC.

REVISION HISTORY					
REV	DATE	DRAWN	CHECKED	DESCRIPTION	
B	18JUN2008	ACH		PRN: P2010-0694	
C	27NOV2012	CMS	BGL	PRN: P2012-1651	



ASSEMBLY	M5-71-2WW-2	WHITE	30x10/30x10	37	15	3.8Kgs
ASSEMBLY	M5-71-220-2	WHITE	30x15/30x15	37	20	9Kgs
ASSEMBLY	M5-71-120-2	BLACK	30x15/30x15	37	20	9Kgs
ASSEMBLY	M5-71-22W-2	WHITE	30x15/30x10	37	20 15	5Kgs
ASSEMBLY	M5-71-12W-2	BLACK	30x15/30x10	37	20 15	5Kgs
ITEM	PART NUMBER	COLOR	MAGNET SIZE	A/mm	B/mm	HOLDING POWER

NOTES:

A. MATERIAL AND FINISH:

MAGNET
HOLDER - NYLON

B. M5-71-122-2 IS OBSOLETE. REPLACE WITH M5-71-120-2.
ALL INFORMATION IS THE SAME, ONLY PART NUMBER HAS
CHANGE.

C. M5-71-222-2 IS OBSOLETE. REPLACE WITH M5-71-220-2.
ALL INFORMATION IS THE SAME, ONLY PART NUMBER HAS
CHANGED.

THIRD ANGLE PROJECTION		 CONNECT · CREATE · INNOVATE				
ALL DIMENSIONS WITHOUT TOLERANCES ARE FOR REFERENCE ONLY.						
MILLIMETERS		SIZE A4	SYSTEM I-DEAS	DWG NO J-M5-71-12W		
VOLUME	MASS	DRWN/CHKD VMV/VGV	DATE 05OCT2007	SCALE 1:1	SHEET 1 OF 1	