

REV.	DATE	DRAWN	REVISION
A	23NOV99	DLH	UPDATED TO HARD TOOL PARTS
B	11DEC2000	DLH	PRN:M3-173
C	19JUN2001	AJH	PRN:P2001-0103
D	31OCT2001	DLH	PRN:P2001-0586
E	13DEC2001	DLH	PRN:P2001-0704
F	28DEC2002	AJH/VNI	PRN:P2002-0882
G	10FEB2004	AJH/RLR	PRN:P2004-0134

DATE	DRAWN	CHD	SCALE	DRAWING NUMBER
25-JUN-99	DLH		5:1	J-M3-40-14-10

ALL DIMENSIONS ARE IN MILLIMETERS.

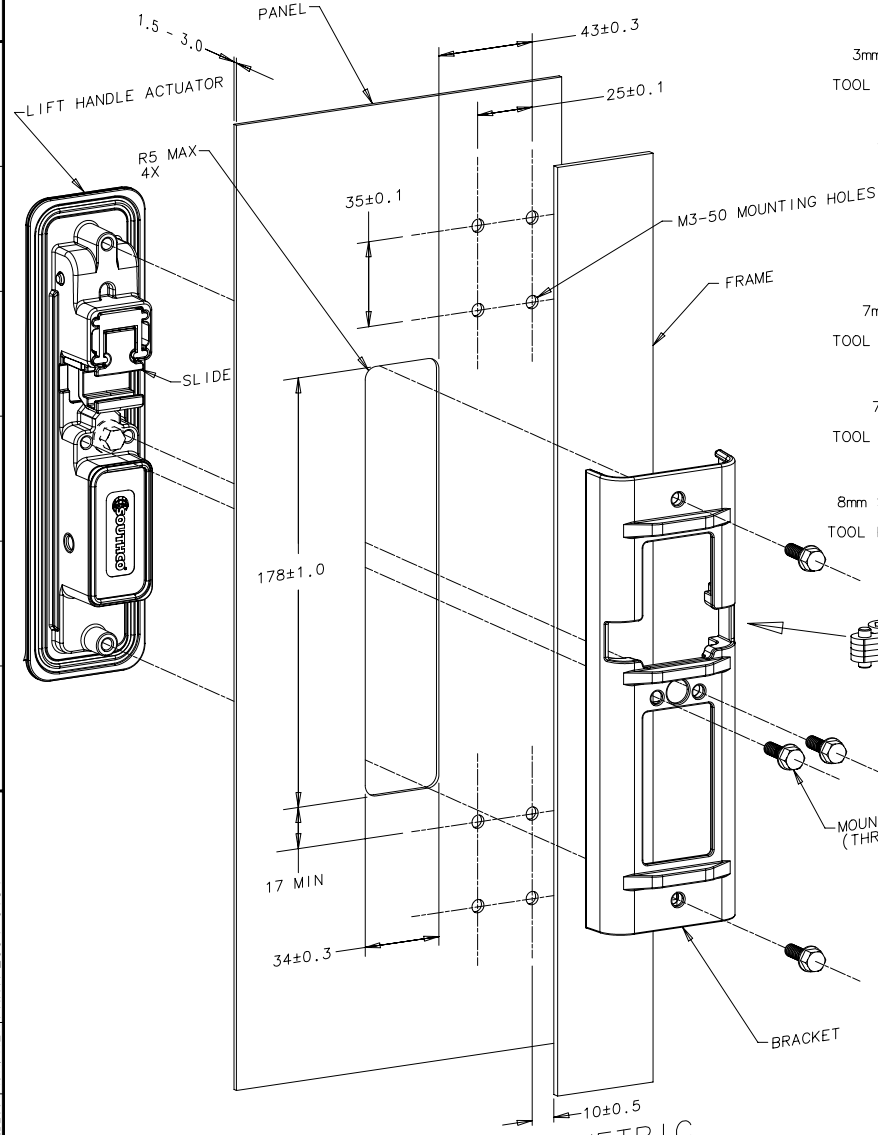
SEE TOOL OPERATED STUD DETAILS FOR **X**

ALL DIMENSIONS WITHOUT TOLERANCES ARE REFERENCE.

AS PAPER SIZE
THIRD ANGLE PROJECTION

INSTALLATION INSTRUCTIONS:

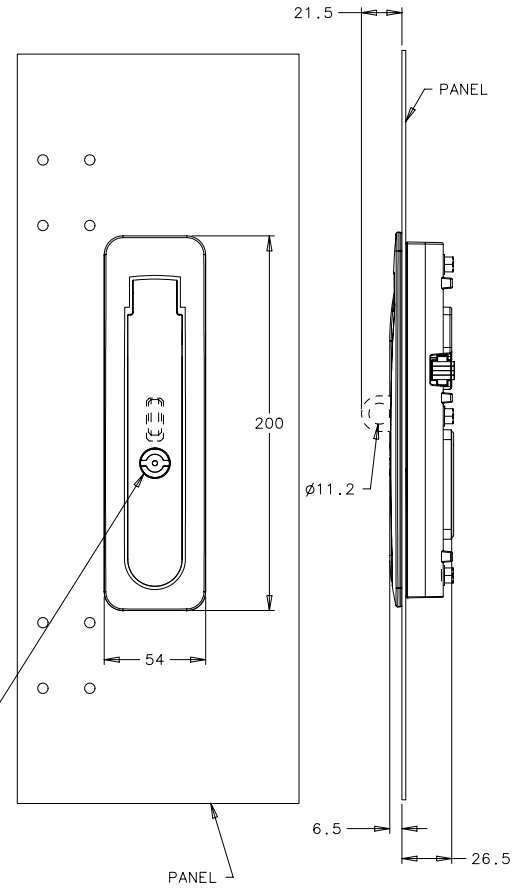
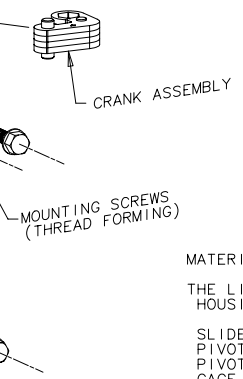
INSERT LIFT HANDLE ACTUATOR INTO PANEL CUTOUT. POSITION BRACKET ON OPPOSITE SIDE OF PANEL AND FASTEN TO LIFT HANDLE ACTUATOR USING MOUNTING SCREWS. TIGHTEN MOUNTING SCREWS WITH DRIVER SET TO 3.4 N·m MIN. - 4.5 N·m MAX. TORQUE.
INSERT CRANK INTO SLIDE WITH REMOTE LATCHES (NOT SHOWN) IN THE CLOSED POSITION, INSERT ROD THROUGH REMOTE LATCHES AND CRANK.



EXPLODED ISOMETRIC

- | | |
|---|---|
| 3mm DOUBLE BIT
XX=14
TOOL PART No. E3-2 | 5mm DOUBLE BIT
XX=15
TOOL PART No. E3-9 |
| TELCO 216
XX=16 | ELECTRONICS KEY
XX=17 |
| 2mm SLOT
XX=18 | 8mm HEX SOCKET
XX=19 |
| 7mm TRIANGLE
XX=20
TOOL PART No. E3-3 | 8mm TRIANGLE
XX=21
TOOL PART No. E3-7 |
| 7mm SQUARE
XX=22
TOOL PART No. E3-4 | 8mm SQUARE
XX=23
TOOL PART No. E3-8 |
| 8mm SQUARE SOCKET
XX=24
TOOL PART No. E3-10 | No.2 PHILLIPS
XX=25 |

TOOL OPERATED STUDS



INSTALLED VIEWS
SCALE .38:1

MATERIAL AND FINISH:

THE LIFT HANDLE ACTUATOR CONSISTS OF:
HOUSING, HANDLE, COVER PLATE, - DIE CAST ZINC, BLACK POWDER COATED, WITH SILICONE AND URETHANE GASKETS
SLIDE - DIE CAST ZINC, ORGANIC COATING
PIVOT PIN OUTER SHELL - 303 STAINLESS STEEL, PASSIVATED
PIVOT PIN INNER SHELL - 303 STAINLESS STEEL, PASSIVATED
CAGE - POLYETHER IMIDE, BLACK
PIVOT PIN SPRING - 302 STAINLESS STEEL, NATURAL
KICK OUT SPRING - 301 STAINLESS STEEL, PASSIVATED
O-RINGS - EPDM, BLACK
HASP - 316 STAINLESS STEEL, RESIN IMPREGNATED
HASP MOUNTING SCREW - STEEL, ZINC PLATE BRIGHT
TOOL OPERATED STUD - DIE CAST ZINC, BLACK POWDER COATED

CRANK ASSEMBLY
CRANK LAMINATE - 304 STAINLESS STEEL, PASSIVATED
CRANK PIN - 300 STAINLESS STEEL, PASSIVATED
CRANK RIVET - STAINLESS STEEL, PASSIVATED

BRACKET - DIE CAST ZINC, BLACK POWDER COATED
MOUNTING SCREWS - STEEL, ZINC PLATE BRIGHT