

Swivel and fixed castors

heavy-duty version



Material:

Housing thick steel plate.
Wheels welded steel body and Extrathane® tread.

Version:

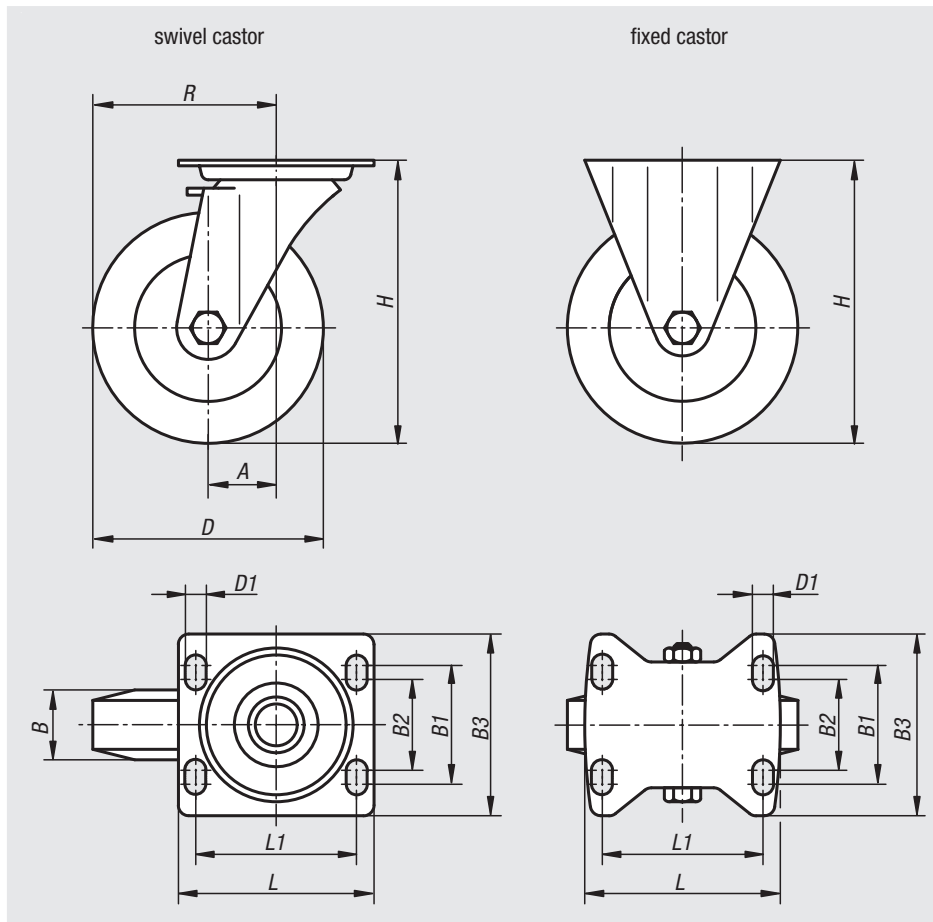
Housing press formed.
Swivel castor housing with strong fork and base plate, very robust centre pin bolted and secured. The swivel head is additionally reinforced with specially formed and hardened bearing shells.

Sample order:

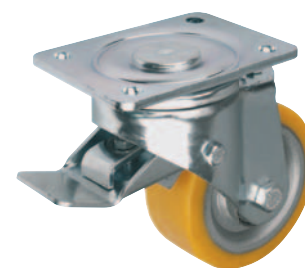
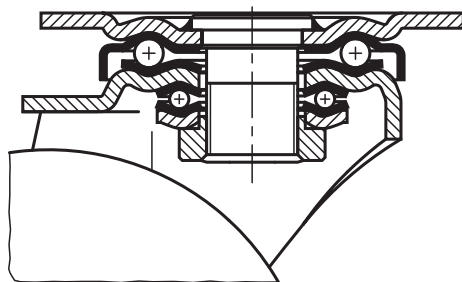
nIm 95030-16050

Note:

These castors are particularly shock and impact proof. The treads resist abrasion and are elastic and low-noise. Wheel axle bolted.



swivel head bearing



Order No. Fixed Castor without locking system	Order No. Swivel Castor without locking system	Order No. Swivel Castor with stop-top locking system	Wheel bearing	A	B	B1	B2	B3	D	D1
95030-125501	95030-12550	95030-125502	ball bearing	-/55/55	50	80	75	110	125	11
95030-160501	95030-16050	95030-160502	ball bearing	-/65/65	50	80	75	110	160	11
95030-200501	95030-20050	95030-200502	ball bearing	-/70/70	50	80	75	110	200	11

Order No. Fixed Castor without locking system	Order No. Swivel Castor without locking system	Order No. Swivel Castor with stop-top locking system	Wheel bearing	H	L	L1	R	Permissible load kg
95030-125501	95030-12550	95030-125502	ball bearing	170	140	105	-/117,5/117,5	500
95030-160501	95030-16050	95030-160502	ball bearing	202	140	105	-/145/145	700
95030-200501	95030-20050	95030-200502	ball bearing	245	140	105	-/170/170	900