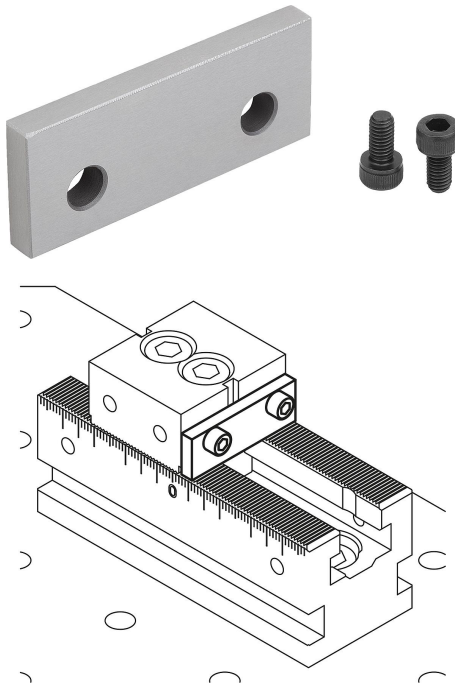


Item description/product images



Description

Material:

Tool steel.

Version:

Hardened and ground (HRC 55 ±2).

Note:

The seating ledges allow different workpiece clamping depths to be set.

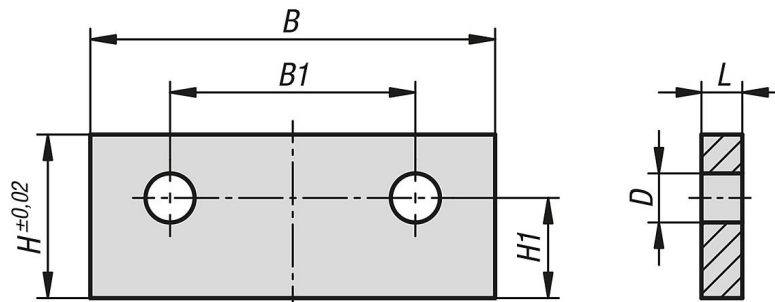
Application:

The seating ledges can be screwed together with the ES and DS fixed jaws and with the wedge clamps.

Advantages:

Quick setup of workpieces on the multiple clamping system. Uniform clamping depth of the workpieces with the ground support surface height.

Drawings



Overview of items

Order No.	suitable for system width	L	B	H	B1	H1	D
41505-050175	50	5	49,5	17	30	12,3	6
41505-050205	50	5	49,5	20	30	12,3	6
41505-050223	50	3	49,5	22	30	12,3	6
41505-072255	72	5	71,5	25	44	18,4	7
41505-072305	72	5	71,5	30	44	18,4	7
41505-072355	72	5	71,5	35	44	18,4	7
41505-072373	72	3	71,5	37	44	18,4	7
41505-100298	100	8	99,5	29	64	21	9
41505-100338	100	8	99,5	33	64	21	9
41505-100388	100	8	99,5	38	64	21	9
41505-100405	100	5	99,5	40	64	21	9

