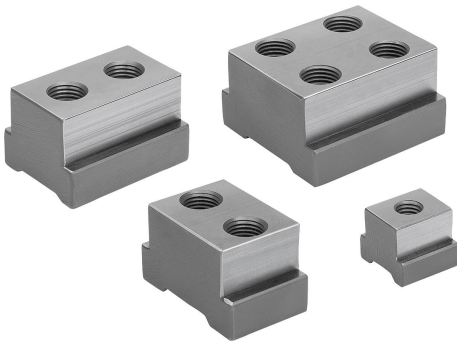


Item description/product images

**Description****Material:**

Carbon steel.

Version:

Tempered. Guide faces ground (HRC 38).

Note:

T-slot keys are matched to the multiple clamping system.

Form A/C are used for fixed stops.

Form B is for operating the clamping wedge of the clamping wedge segments.

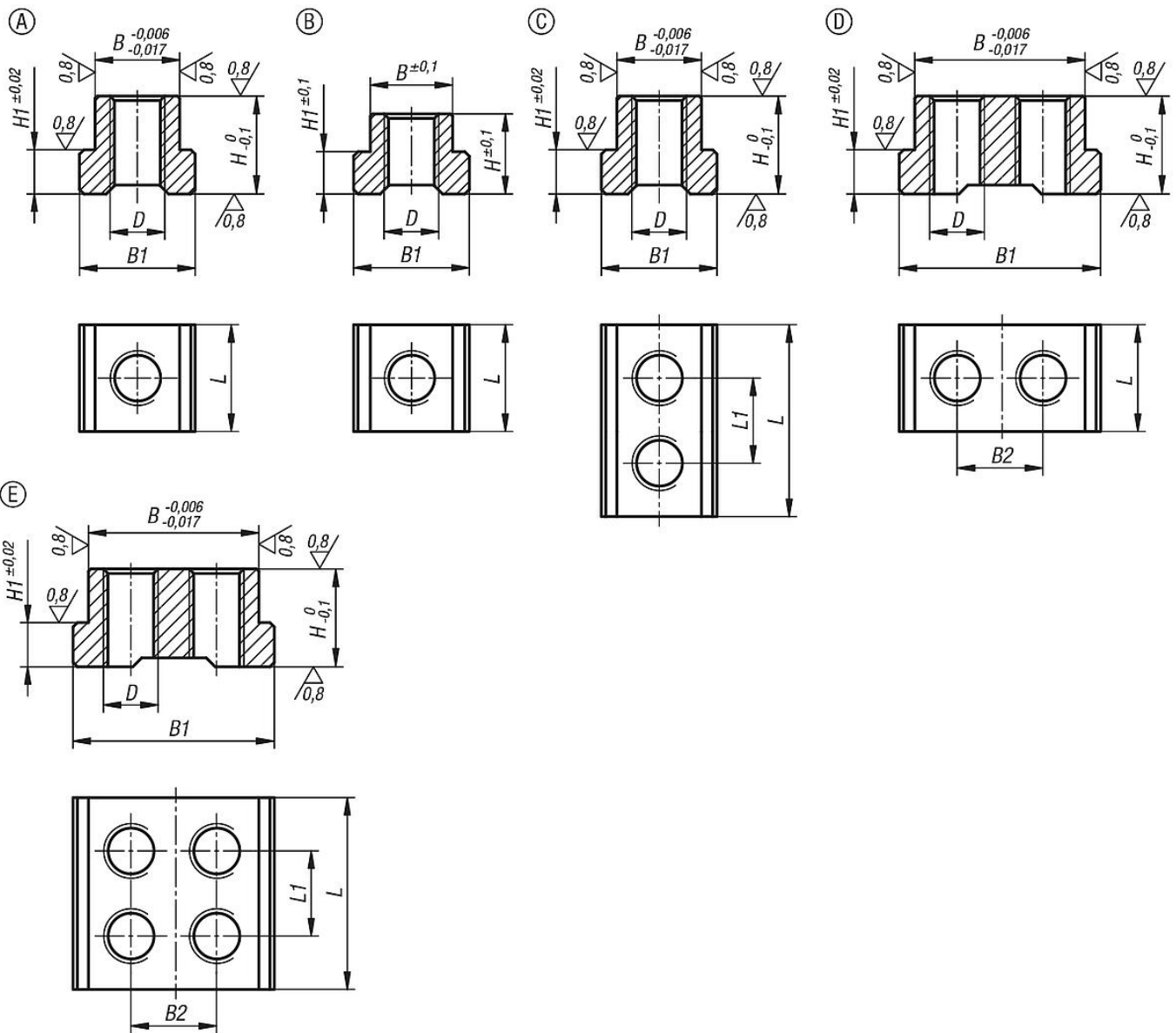
Application:

The T-slot keys are inserted into the clamping rail at the appropriate position. The cap screw is used to screw the T-slot keys to the fixed stops and wedge clamps.

Advantages:

With Form A/C, the T-slot key has very little play in the clamping rail, so the fixed stops can also be inserted from the side.

Drawings



Overview of items

Order No.	suitable for system width	Form	Suitable for	L	L1	B	H	B1	H1	D
41505-17-05010241	50	A	fixed jaw single-sided	24	-	19	22	26	9,95	M10
41505-17-05010361	50	C	fixed jaw double-sided	36	18	19	22	26	9,95	M10
41505-17-05012241	50	A	wedge clamp with fixed jaw	24	-	19	22	26	9,95	M12
41505-17-05012262	50	B	double-sided wedge clamp	26	-	18,5	18	26	9,5	M12
41505-17-07214281	72	A	fixed jaw single-sided	28	-	30	33	40	14,95	M14x1,5
41505-17-07214533	72	C	fixed jaw double-sided	53	28	30	33	40	14,95	M14x1,5
41505-17-07216281	72	A	wedge clamp with fixed jaw	28	-	30	33	40	14,95	M16
41505-17-07216302	72	B	double-sided wedge clamp	30	-	29,5	28,5	39,5	14,5	M16
41505-17-10014344	100	D	Festbacke einseitig/Keilspannsegment m.Festbacke	34	-	45	33	56	14,95	M14x1,5
41505-17-10014595	100	E	fixed jaw double-sided	59	30	45	33	56	14,95	M14x1,5
41505-17-10016342	100	A	double-sided wedge clamp	34	-	44,5	28,5	55,5	14,5	M16

