

Item description/product images



Description

Material:

Carbon steel.

Version:

Tempered and flat faces ground (HRC 32).

Note:

The spacer for the workpiece stop is used to extend the lateral stop dimension.

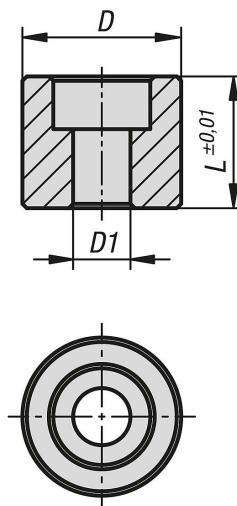
Application:

The spacer is screwed onto the side of the fixed jaw together with the workpiece stop.

Advantages:

Increases the adjustment range of the lateral end stop.

Drawings



Overview of items

Order No.	suitable for system width	L	D	D1 for screw to DIN 912
41505-12-05010	50/72	10	18	M6
41505-12-05015	50/72	15	18	M6
41505-12-05023	50/72	23	18	M6
41505-12-10015	100	15	25	M8
41505-12-10020	100	20	25	M8
41505-12-10025	100	25	25	M8