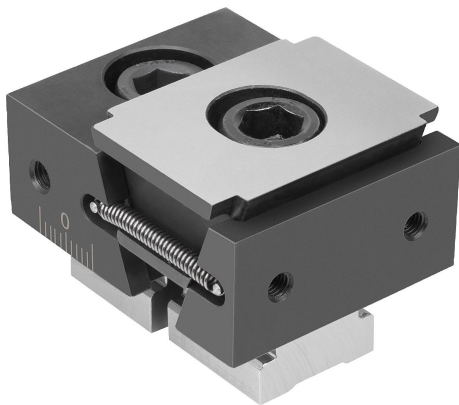


Item description/product images



Description

Product description:

The functioning principle make the wedge clamps ideal for multi-clamping. The wedge shape creates high clamping forces. Tightening the clamping screw moves the clamping segments outwards and press the workpieces against the fixed jaws. The wedge has a slightly elongated hole allowing for movement to compensate for tolerances.

Displacement: M12 = ± 1 mm, M16 = ± 1.5 mm.

Material:

Double wedge and clamping segments mild steel.

Version:

Double wedge and clamping segments hardened, phosphated.

Note:

These wedge clamps can only be used in conjunction with the clamping rail 41500 for multiple clamping.

The lateral fastening holes are used to fasten workpiece stops.

The two screw-on holes in the clamping faces also enable seating ledges to be mounted so as to optimise the clamping depth of the workpieces.

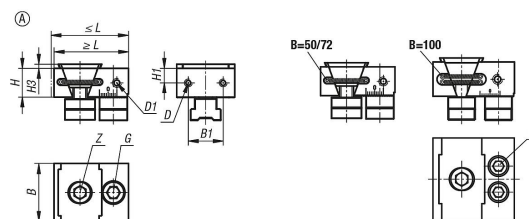
Advantages:

The lateral scale on the clamping rail and the fixed jaw guarantees a very high repeat clamping accuracy.

Supplied with:

Wedge clamps
Fastening screws.
Slot keys.

Drawings



Overview of items

Order No.	Form	L min.	L max.	B	H	B1	H1	H3	D	D1	F	G	Z	Clamping force max. kN	Tightening torque max. Nm
									Internal thread		Socket head screw DIN 912	cap screw DIN 912	cap screw DIN 912		
41501-05-0500112	A	64	70	50	25	30	12,5	3,5	M5	M6	-	M12x30	M12x25	30	85
41501-05-0720116	A	86	93	72	39,7	44	21,3	3,5	M6	M6	-	M16x50	M16X40	50	150
41501-05-1000116	A	101,5	111,5	100	42,6	64	21,6	5	M8	M8	M14X1,5X50	-	M16X40	50	150

