

## Pivoting systems



**Material:**  
Steel.

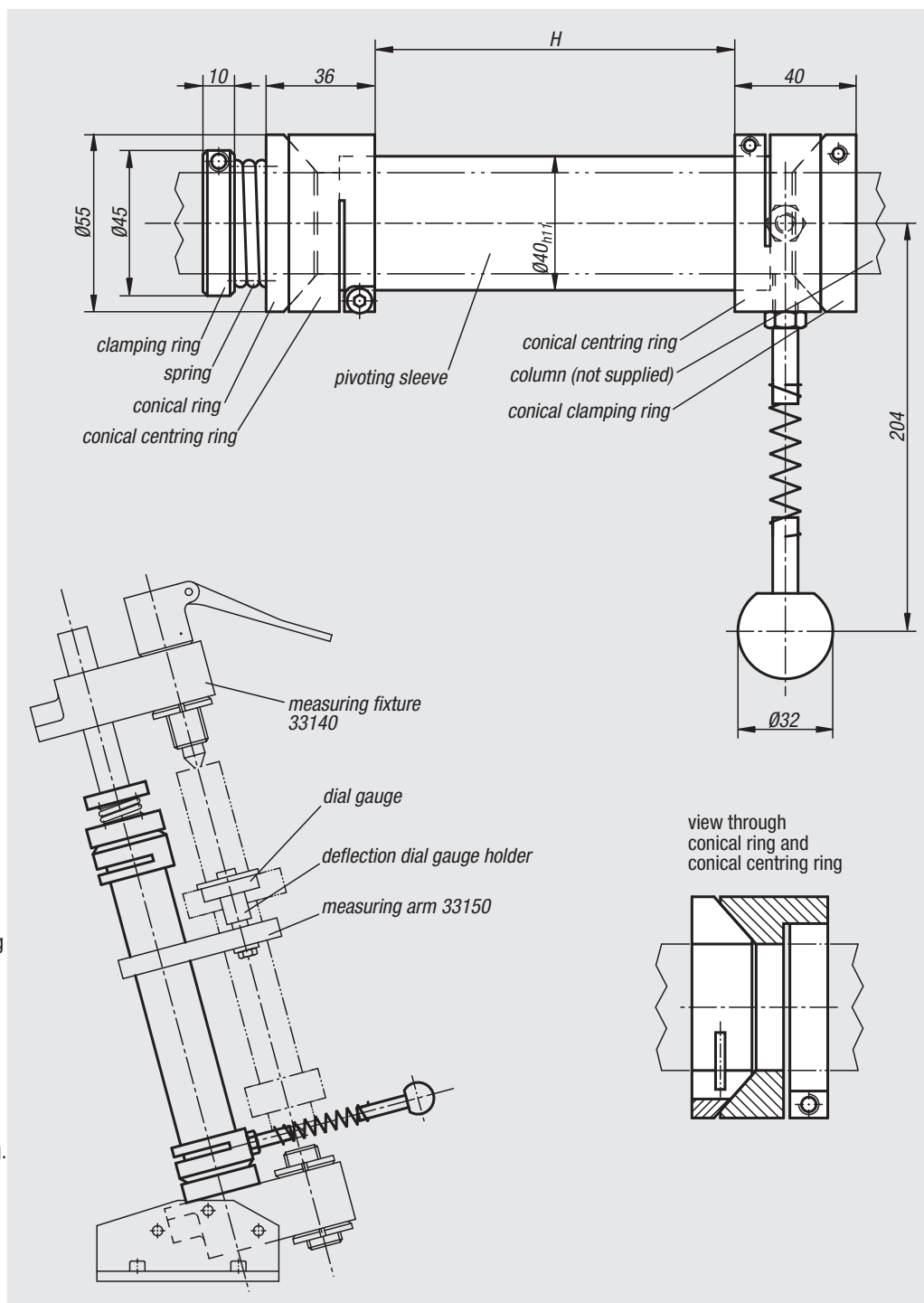
**Version:**  
Black oxidised.

**Sample order:**  
nlm 33115-426

**Note:**  
The pivoting systems are adapted to measuring fixtures 33140.  
Measuring arms see 33150.

**Assembly:**

- Place the conical clamping ring on the guide column and clamp in the desired position.
- Fix the conical centring ring to the pivoting sleeve and insert it such that the conical centring ring lies on top of the conical clamping ring.
- Fix the measuring arm onto the pivoting sleeve.
- Fix the second conical centring ring onto the pivoting sleeve.
- Insert the conical ring and pressure spring.
- Mount the pressure spring on the block with the clamping ring to prevent axial play.
- Lubricate all moving parts.



Order No.

H

33115-200

200

33115-276

276

33115-426

426

33115-536

536