

Filler necks



Material, version:

1. Sealing cap red Polyamide 66 thermoplastic.
2. Filler sieve black Polypropylene thermoplastic.
3. Flange electro zinc-plated steel.
4. Fastening screws electro zinc-plated steel.
5. Flange seal cork.
6. Chain brass.

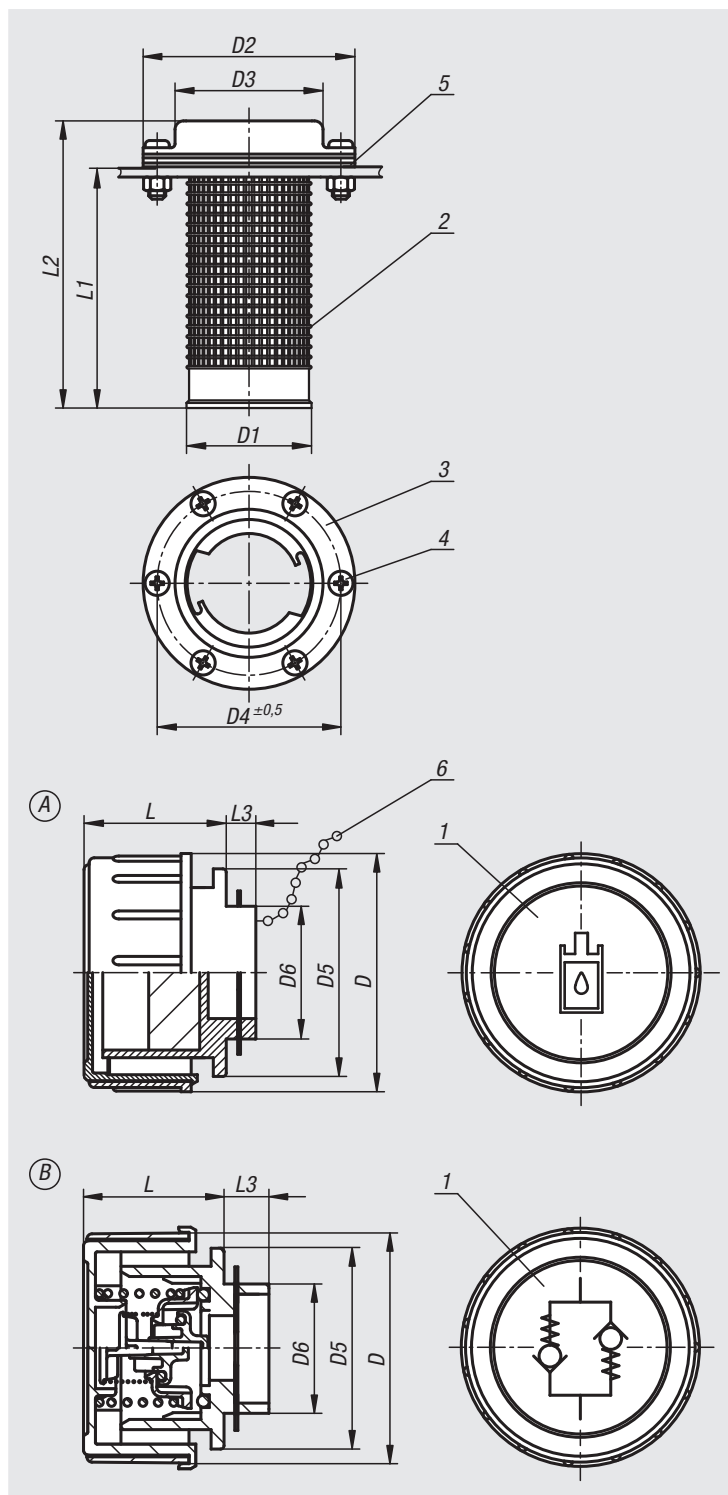
Sample order:

nIm 28072-170

Note:

Form A: the max. pressure while venting is 50 mbar (0.73 psi) with a max. air volume of 500 l/min. The air filter prevents dirt entering.

Form B: contains a plastic vent and aeration valve. The opening pressure while venting is 0.35 bar (± 0.05 bar). The opening pressure while aerating is 0.05 bar. This form is suitable for applications where the airflow needs to be controlled in both directions.



Order No.	Form	Version 2	D	D1	D2	D3	D4	D5	D6	L	L1	L2	L3
28072-170	A	with filter	70	46	83	58	72	60	37	41	94	115	14
28072-270	B	vent valve	70	46	83	58	72	60	37	41	94	115	14