

# Hinges

weldable, stainless steel



**Material:**

Stainless steel 1.4305.

**Version:**

Bright.

**Sample order:**

nIm 27886-010060033

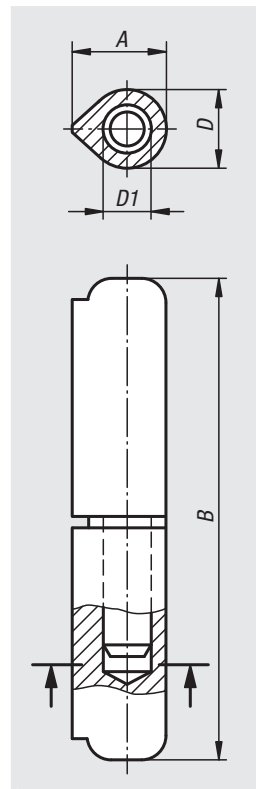
**Note:**

The hinges are made of weldable profile steel.

The pin is fixed into the lower part of the hinge.

The differing steel qualities of the weld and the beam onto which the hinge is welded must be at least equal to or better than:

Stainless steel 1.4301.



Order No.	A	B	D	D1
27886-010060033	12	60	10	6
27886-013080033	15,5	80	13	8
27886-016100033	20	100	16	10
27886-016120033	20	120	16	11
27886-020150033	25,5	150	20	13
27886-020180033	25,5	180	20	14