

Hinges

weldable, stainless steel



Material:

Stainless steel 1.4404.

Version:

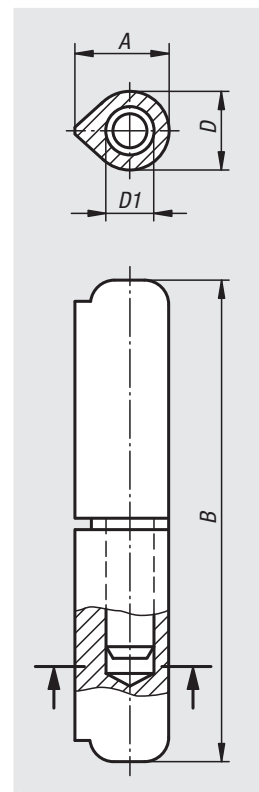
Satin finished.

Sample order:

nIm 27886-01-013079

Note:

The hinges are made of weldable profile steel.
 The pin is fixed into the lower part of the hinge.
 The differing steel qualities of the weld and the beam onto which the hinge is welded must be at least equal to or better than:
 Stainless steel 1.4404



Order No.	A	B	D	D1
27886-01-016080	20	80	16	10
27886-01-016100	20	100	16	10
27886-01-016120	20	120	16	11