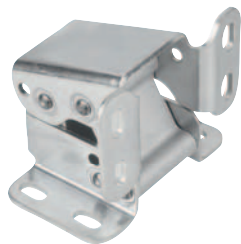


Hinges steel

internal, opening angle 110°



Material:

Steel, pins and connecting elements anodised aluminium.

Version:

Electro zinc-plated.

Sample order:

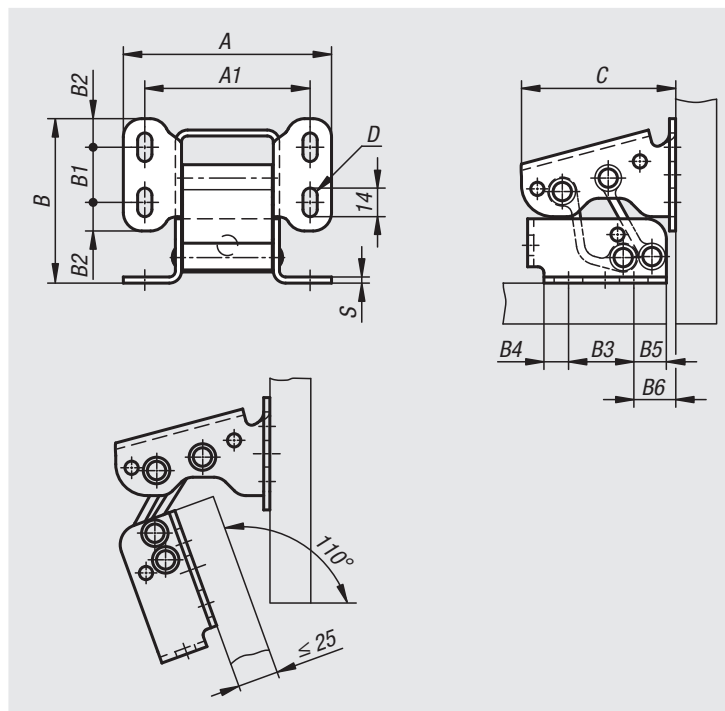
nIm 27879-02-1028076

Note:

These hinges are the reinforced version. When hung on 2 hinges a 25 kg door can be opened and closed 10,000 times.

Application:

Invisible hinges for overlapping or inset doors.



Order No.	A	A1	B	B1	B2	B3	B4	B5	B6	C	D	S
27879-02-1028076	102	81	80,5	27	14	32	12	16	20,5	76	7	3