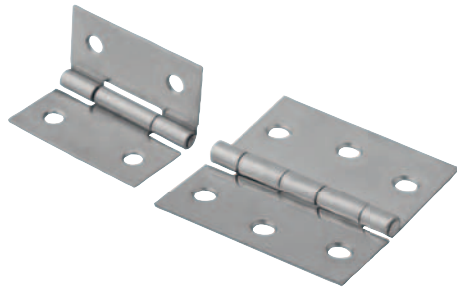


Hinges

sheet steel or sheet stainless steel



Material:

Steel or stainless steel 1.4301.

Version:

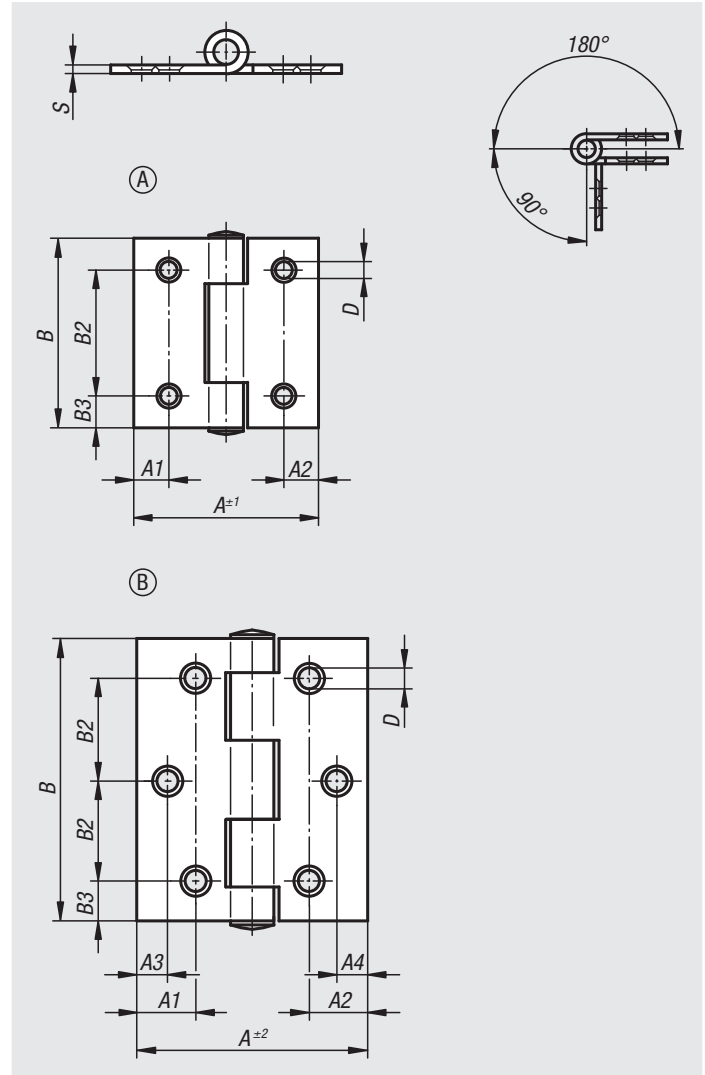
Steel electro zinc-plated.
Stainless steel bright.

Sample order:

nIm 27877-04201212

Note:

Rolled plate butt hinges.
Pins are riveted.
Screw holes countersunk.



Order No.	Material	Form	A1	A2	A3	A4	A	B	B2	B3	D	S
27877-04201212	steel	A	8,5	8,5	-	-	40	40	25	7,5	4	1
27877-04301515	steel	B	15	15	8	8	60	60	22,5	7,5	4,5	1,5
27877-104201212	stainless steel	A	8,5	8,5	-	-	40	40	25	7,5	4	1
27877-104251414	stainless steel	B	11	11	8	8	50	50	18	7	4,5	1,25
27877-104301515	stainless steel	B	15	15	8	8	60	60	22,5	7,5	4,5	1,5
27877-105401515	stainless steel	B	25,3	25,3	12	12	80	80	30	10	5,2	1,5