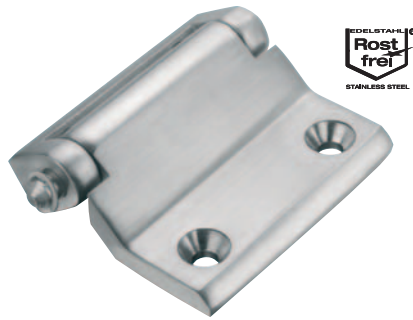


Hinges

stainless steel



Material:

Hinge body stainless steel 1.4401.

Pin and retaining rings stainless steel 1.4305.

Version:

Satin finished.

Sample order:

nIm 27876-02-0540073000

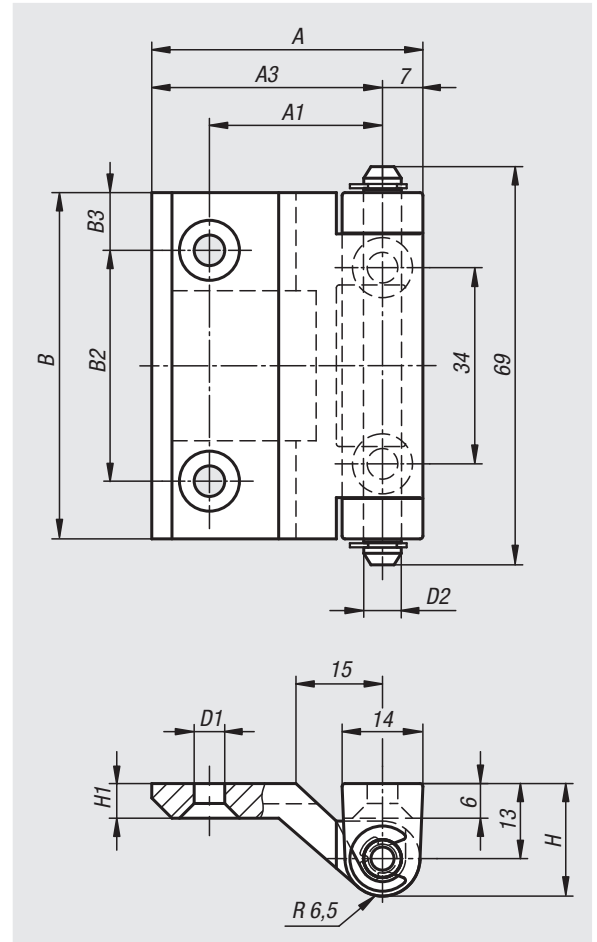
Note:

Hinge for flush constructions.

Right or left mounting.

Ideal for mounting on narrow frames.

The opening angle is max. 220°.



Order No.	A	A1	A3	B	B2	B3	D1	D2	H	H1
27876-02-0540073000	47	30	40	60	40	10	5,3	6,5	19,5	6

20000
21000
22000
23000
24000
26000
27000
28000
29000
31000
32000
33000