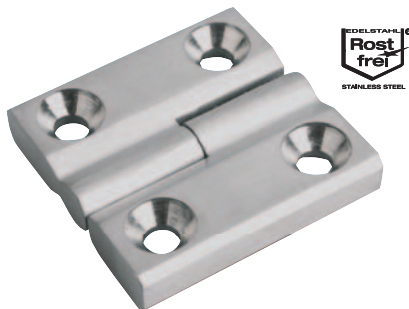


Hinges lift-off

stainless steel



Material:

Hinge and pin stainless steel 1.4401.

Version:

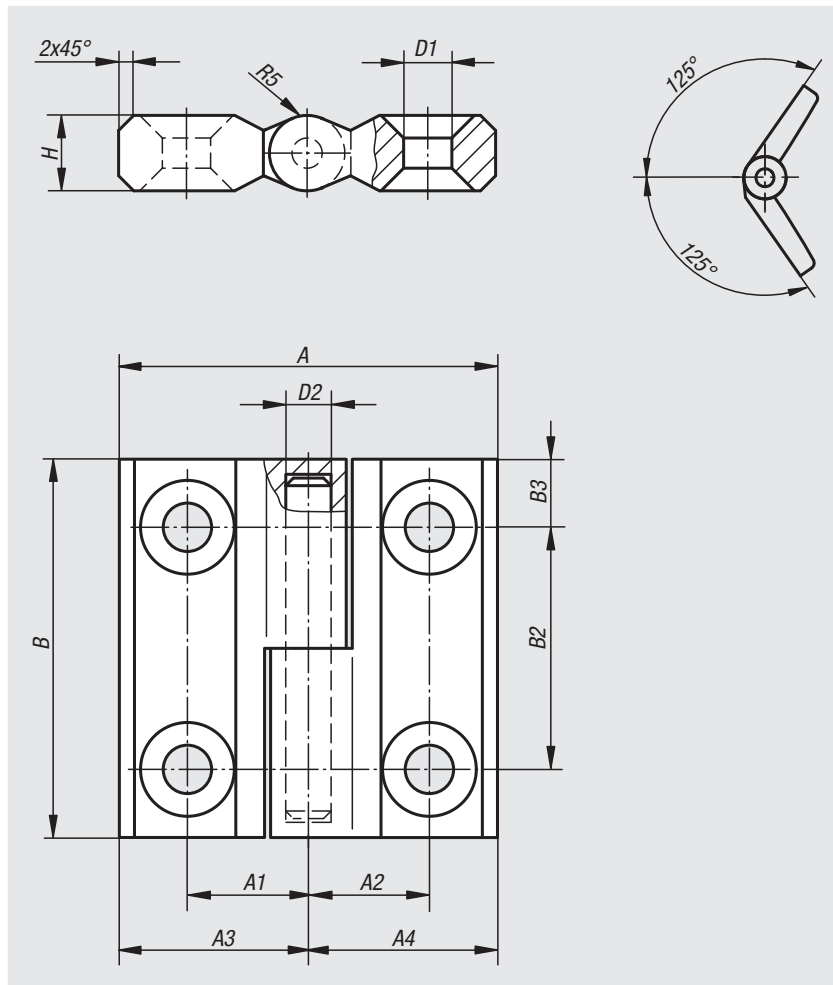
Satin finished.

Sample order:

nIm 27875-89-06251616

Note:

This double symmetry hinge can be mounted right or left. The opening angle is max. 125°.



Order No.	A	A1	A2	A3	A4	B	B2	B3	D1	D2	H	Load capacity N
27875-89-06251616	50	16	16	25	25	50	32	9	6,4	6	10	5000

20000
21000
22000
23000
24000
26000
27000
28000
29000
31000
32000
33000