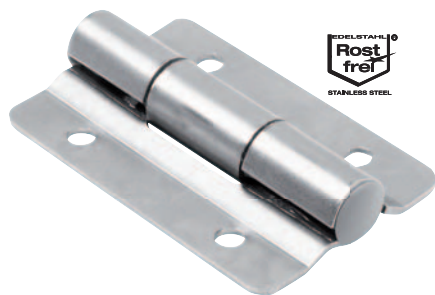


# Hinges, stainless steel

with preset friction


**Material:**

Stainless steel 1.4310.

**Version:**

Bright.

**Sample order:**

nln 27860-01-55853

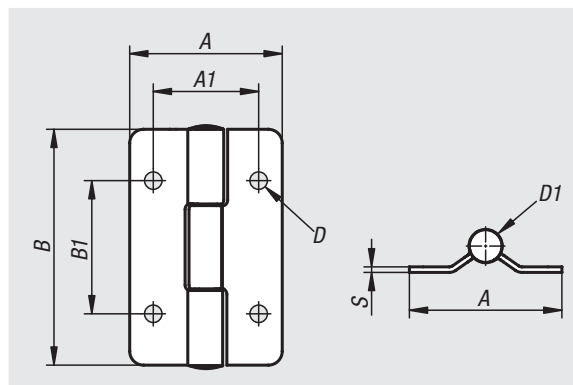
**Note:**

Due to the constant and stable torque, the hinges permit door positioning in any angular orientation without the need for additional aids.

Opening angle 270°.

**Accessories:**

Hinges, stainless steel 27877-02



Order No.	A	A1	B	B1	D	D1	S	Max. torque Nm
27860-01-55853	55	38	85	48	6,3	12	2	3
27860-01-55855	55	38	85	48	6,3	16	2	5