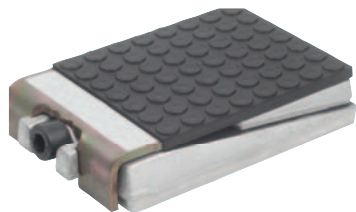


# Levelling wedges, steel

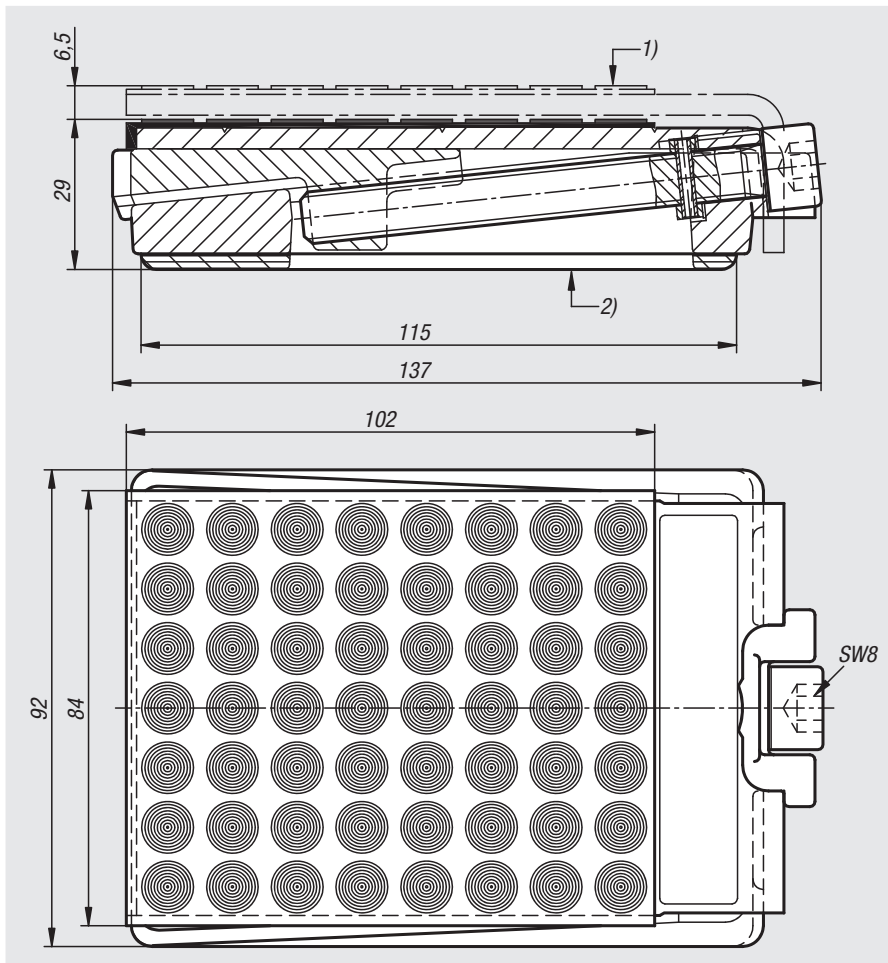
with non-slip insulating layer, free-standing



**Material:**  
Steel, nitrile rubber.

**Sample order:**  
nlm 27710-05-137092035

**Note:**  
The low non-slip levelling wedge is suitable for loads of up to 2 tonnes.  
The levelling wedge provides a large support surface with a nubbed structure made of nitrile with a hardness of Shore 80.  
Using the flat angle of the wedges, the height of the levelling wedge can be adjusted by 0.15 mm per turn of the screw.  
The vulcanized non-slip layer provides durable insulation from vibrations, noise, and corrosive media.



Order No.	Permanent load (kN)	Max. perm. load (kN)	Torque on setscrew (Nm)	Height adjustment per rotation (mm)
27710-05-137092035	20	35	20	0,15

20000  
21000  
22000  
23000  
24000  
26000  
27000  
28000  
29000  
31000  
32000  
33000