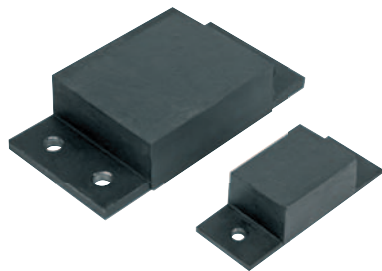


Rubber-metal impact buffer rails


Material:

Steel.

Elastomer, natural rubber, medium hardness, Shore 57A.

Version:

Steel, painted black.

(26120-02501904557, 26120-05003507057 and

26120-10004512057 electro zinc-plated).

Sample order:

nIm 26120-02501904557

Note:

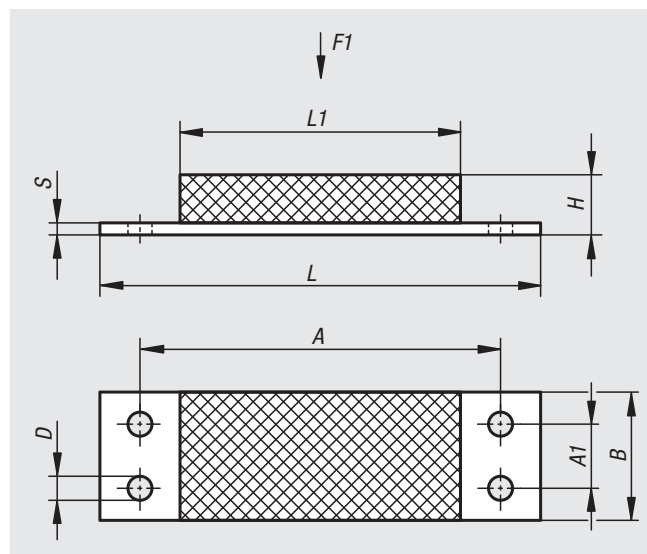
For absorbing large impact forces and supporting heavy weights.

The indicated load data apply for static long-term loading on rubber with a Shore hardness 57A.

* Metal part 30 mm wide.

Temperature range:

-30 °C to +80 °C



Order No.	A	A1	B	D	H	L	L1	S	F1 N
26120-02501904557	68,6	-	25*	6,5	19	84	45	3	500
26120-05003507057	100	-	50	8,5	35	130	70	5	3100
26120-05007007057	100	-	50	8,5	70	130	70	5	2500
26120-10004512057	160	50	100	13	45	200	120	10	14000
26120-10008012057	160	50	100	13	80	200	120	10	8500
26120-12004515057	200	60	120	15	45	250	150	10	18000
26120-15005020057	250	80	150	17	50	300	200	15	34000