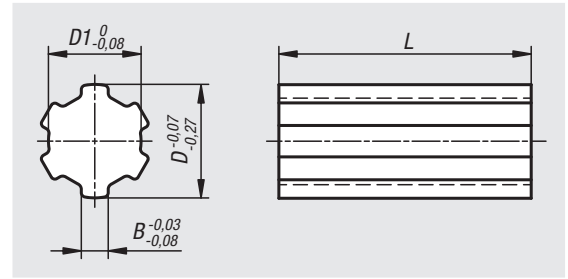
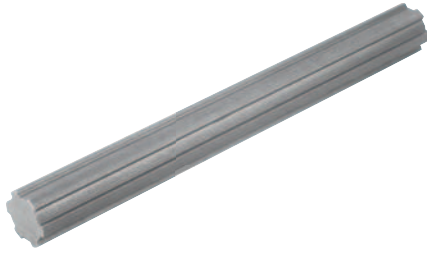


Splined shafts

similar to DIN ISO 14


Material:

C45 steel or 1.4301 stainless steel.

Version:

Cold-drawn, bright.

Sample order:

nIm 24010-11141X1000

Note:

Spline shafts based on DIN ISO 14 with straight parallel flanks. A spline shaft with spline hub is used to transmit high torques while enabling simultaneous axial movement. The spline shafts are cold-drawn. Cold drawing does not interrupt the grain flow of the base material, ensuring spline shafts of very high strength.

Tolerances:

Straightness 0.8 mm/m.

Torsion max. 0.5 mm/m.

On request:

Other lengths.

| Order No. steel | Order No. stainless steel | Profile | No. of splines | B | D | D1 | L |
|--------------------|------------------------------|---------|-------------------|-----|----|----|------|
| 24010-11141X1000 | 24010-11142X1000 | KW11X14 | 6 | 3 | 14 | 11 | 1000 |
| 24010-13161X1000 | 24010-13162X1000 | KW13X16 | 6 | 3,5 | 16 | 13 | 1000 |
| 24010-16201X1000 | 24010-16202X1000 | KW16X20 | 6 | 4 | 20 | 16 | 1000 |
| 24010-18221X1000 | 24010-18222X1000 | KW18X22 | 6 | 5 | 22 | 18 | 1000 |
| 24010-21251X1000 | 24010-21252X1000 | KW21X25 | 6 | 5 | 25 | 21 | 1000 |
| 24010-23281X1000 | 24010-23282X1000 | KW23X28 | 6 | 6 | 28 | 23 | 1000 |
| 24010-26321X1000 | 24010-26322X1000 | KW26X32 | 6 | 6 | 32 | 26 | 1000 |
| 24010-32381X1000 | 24010-32382X1000 | KW32X38 | 8 | 6 | 38 | 32 | 1000 |
| 24010-36421X1000 | 24010-36422X1000 | KW36X42 | 8 | 7 | 42 | 36 | 1000 |
| 24010-42481X1000 | 24010-42482X1000 | KW42X48 | 8 | 8 | 48 | 42 | 1000 |
| 24010-46541X1000 | 24010-46542X1000 | KW46X54 | 8 | 9 | 54 | 46 | 1000 |