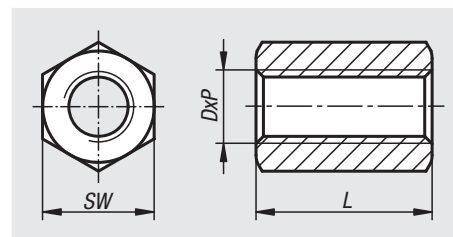
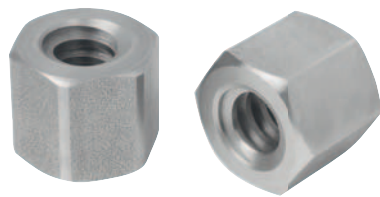


Trapezoidal thread nuts, hexagon

single-start, RH or LH thread


Material:

Steel C35Pb.

Stainless steel 1.4305.

Version:

Bright.

Sample order:

nIm 24007-100211

Note:

ISO trapezoidal thread according to DIN 103.

for adjustments during manual operation and as fastening nuts. Not advisable for use with motorised drives due to the steel/steel material pairing.

Tolerance class 7H.

Order No. RH thread steel	Order No. RH thread stainless steel	Order No. LH thread steel	Order No. LH thread stainless steel	DxP	L	SW
24007-100211	24007-100212	24007-100221	24007-100222	Tr 10x2	15	17
24007-100311	24007-100312	24007-100321	24007-100322	Tr 10x3	15	17
24007-120311	24007-120312	24007-120321	24007-120322	Tr 12x3	18	19
24007-140311	24007-140312	24007-140321	24007-140322	Tr 14x3	21	22
24007-140411	24007-140412	24007-140421	24007-140422	Tr 14x4	21	22
24007-160411	24007-160412	24007-160421	24007-160422	Tr 16x4	24	27
24007-180411	24007-180412	24007-180421	24007-180422	Tr 18x4	27	27
24007-200411	24007-200412	24007-200421	24007-200422	Tr 20x4	30	30
24007-240511	24007-240512	24007-240521	24007-240522	Tr 24x5	36	36
24007-260511	24007-260512	24007-260521	24007-260522	Tr 26x5	39	36
24007-280511	24007-280512	24007-280521	24007-280522	Tr 28x5	42	46
24007-300611	24007-300612	24007-300621	24007-300622	Tr 30x6	45	46
24007-320611	24007-320612	24007-320621	24007-320622	Tr 32x6	48	46
24007-360611	24007-360612	24007-360621	24007-360622	Tr 36x6	54	55
24007-400711	24007-400712	24007-400721	24007-400722	Tr 40x7	60	65
24007-440711	24007-440712	24007-440721	24007-440722	Tr 44x7	66	65
24007-500811	24007-500812	24007-500821	24007-500822	Tr 50x8	75	75