



Trapezoidal thread spindles
single-start, RH or LH thread

Splined shafts
similar to DIN ISO 14



Trapezoidal thread spindles
double-start, RH thread

Splined hubs round
similar to DIN ISO 14



Trapezoidal thread nuts, round
single-start, RH or LH thread

Splined hubs with flange
similar to DIN ISO 14



Trapezoidal thread nuts, round
double-start, RH thread

Ball screw linear actuators
rolled, with flange nut DIN 69051 Part 5



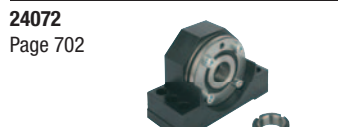
Trapezoidal thread flange nuts
single-start, RH or LH thread

Ball screw linear actuators
rolled, with screw-in cylinder nut



Trapezoidal thread nuts with flange
double-start, RH thread

Housings
for flange nuts



Trapezoidal thread nuts, hexagon
single-start, RH or LH thread

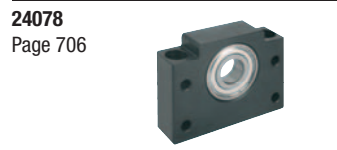
Fixed bearing units



Floating bearing units



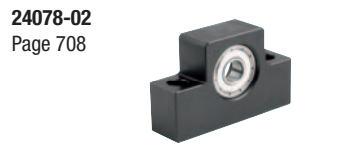
Fixed bearing units
block version



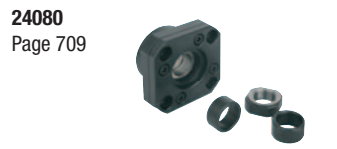
Floating bearing units
block version



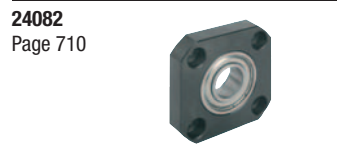
Fixed bearing units
block version



Floating bearing units
block version



Fixed bearing units
flange version



Floating bearing units
flange version



Miniature ball screw linear actuators
ground, with flange nut



Miniature ball screw linear actuators
ground, with screw-in cylinder nut



Pillow block bearing pedestal type UCP



Pillow block bearing flange type UCF



Pillow block bearing flange type UCFC
with centring hub



Pillow block bearing flange type UCFL
2-hole



Pillow block bearing pedestal type BPP



Insert bearing UC



Insert bearing B



Pillow block bearing pedestal
stainless steel



Pillow block bearing pedestal type

24241-01
Page 725



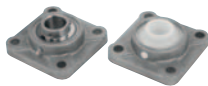
Pillow block bearing pedestal type

24242
Page 726



Pillow block bearing flange type MUCF stainless steel

24242-01
Page 727



Pillow block bearing flange type

24244
Page 728



Pillow block bearing flange type MUCF 2-hole stainless steel

24244-01
Page 729



Pillow block bearing flange type 2-hole

24248
Page 730



Insert bearing MUC stainless steel

24262-01
Page 731



Pillow block bearing pedestal type

24264-01
Page 732



Pillow block bearing flange type

24266-01
Page 733



Pillow block bearing flange type 2-hole

Compression springs
Elastomer buffers
Rubber buffers
Shock absorbers
Gas springs



26000
Page 738



Compression springs ISO 10243, light load

26001
Page 740



Compression springs ISO 10243, moderate load

26002
Page 742



Compression springs ISO 10243, heavy load

26003
Page 744



Compression springs ISO 10243, very heavy load

26090
Page 746



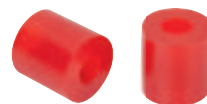
Elastomer buffers Shore 70A

26091
Page 747



Elastomer buffers Shore 80A

26092
Page 748



Elastomer buffers Shore 90A

26100
Page 750



Rubber buffers steel or stainless steel, type A

26101
Page 751



Rubber buffers type AT tapered

26102
Page 751



Rubber buffers steel or stainless steel, type B

26102-01
Page 753



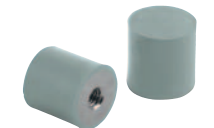
Rubber buffers stainless steel, type B

26103
Page 754



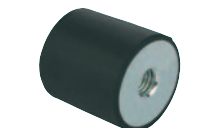
Rubber buffers type E

26103-01
Page 755



Rubber buffers stainless steel, type E

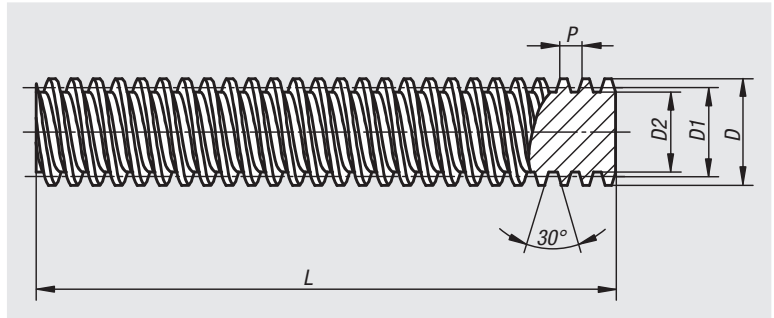
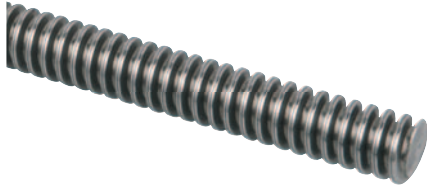
26104
Page 756



Rubber buffers steel or stainless steel, type C

Trapezoidal thread spindles

single-start, RH or LH thread



Material:

Steel 1.0401 (C15) or stainless steel 1.4301 (whirled spindles stainless steel 1.4305).

Version:

Steel rolled, bright.
Stainless steel up to Tr 40x7 rolled, above this whirled, bright.

Sample order:

nIm 24000-100311X1000

Note:

Rolled, high precision trapezoidal thread spindles. ISO trapezoidal thread based on DIN 103.

The trapezoidal thread spindle is a transmission thread with relatively high friction. Standard thread forms are self-locking. This has the advantage that they generally do not need to be secured in the rest position.

Tolerance class 7e
Pitch precision 0.3/300 mm
Length sawed with excess, ends not deburred.

Order No. RH-thread rolled	Order No. LH-thread rolled	Main material	DxP	D1 min.	D1 max.	D2	L
24000-081511X1000	24000-081521X1000	mild steel	Tr 8x1,5	7,013	7,183	5,921	1000
24000-100211X1000	24000-100221X1000	mild steel	Tr 10x2	8,739	8,929	7,191	1000
24000-100311X1000	24000-100321X1000	mild steel	Tr 10x3	8,191	8,415	5,84	1000
24000-120311X1000	24000-120321X1000	mild steel	Tr 12x3	10,191	10,415	7,84	1000
24000-140311X1000	24000-140321X1000	mild steel	Tr 14x3	12,191	12,415	10,135	1000
24000-140411X1000	24000-140421X1000	mild steel	Tr 14x4	11,640	11,905	8,8	1000
24000-160411X1000	24000-160421X1000	mild steel	Tr 16x4	13,640	13,905	10,8	1000
24000-180411X1000	24000-180421X1000	mild steel	Tr 18x4	15,640	15,905	12,8	1000
24000-200411X1000	24000-200421X1000	mild steel	Tr 20x4	17,640	17,905	14,8	1000
24000-240511X1000	24000-240521X1000	mild steel	Tr 24x5	21,094	21,394	17,5	1000
24000-260511X1000	24000-260521X1000	mild steel	Tr 26x5	23,094	23,394	19,5	1000
24000-280511X1000	24000-280521X1000	mild steel	Tr 28x5	25,049	25,390	21,5	1000
24000-300611X1000	24000-300621X1000	mild steel	Tr 30x6	26,547	26,882	21,9	1000
24000-320611X1000	24000-320621X1000	mild steel	Tr 32x6	28,547	28,882	23,9	1000
24000-360611X1000	24000-360621X1000	mild steel	Tr 36x6	32,547	32,882	27,9	1000
24000-400711X1000	24000-400721X1000	mild steel	Tr 40x7	36,020	36,375	30,5	1000
24000-440711X1000	24000-440721X1000	mild steel	Tr 44x7	40,020	40,375	34,5	1000
24000-500811X1000	24000-500821X1000	mild steel	Tr 50x8	45,468	45,868	39,3	1000
24000-081512X1000	24000-081522X1000	stainless steel	Tr 8x1,5	7,013	7,183	5,921	1000
24000-100212X1000	24000-100222X1000	stainless steel	Tr 10x2	8,739	8,929	7,191	1000
24000-100312X1000	24000-100322X1000	stainless steel	Tr 10x3	8,191	8,415	5,84	1000
24000-120312X1000	24000-120322X1000	stainless steel	Tr 12x3	10,191	10,415	7,84	1000
24000-140312X1000	24000-140322X1000	stainless steel	Tr 14x3	12,191	12,415	10,135	1000
24000-140412X1000	24000-140422X1000	stainless steel	Tr 14x4	11,640	11,905	8,8	1000
24000-160412X1000	24000-160422X1000	stainless steel	Tr 16x4	13,640	13,905	10,8	1000
24000-180412X1000	24000-180422X1000	stainless steel	Tr 18x4	15,640	15,905	12,8	1000
24000-200412X1000	24000-200422X1000	stainless steel	Tr 20x4	17,640	17,905	14,8	1000
24000-240512X1000	24000-240522X1000	stainless steel	Tr 24x5	21,094	21,394	17,5	1000
24000-260512X1000	24000-260522X1000	stainless steel	Tr 26x5	23,094	23,394	19,5	1000
24000-280512X1000	24000-280522X1000	stainless steel	Tr 28x5	25,049	25,390	21,5	1000
24000-300612X1000	24000-300622X1000	stainless steel	Tr 30x6	26,547	26,882	21,9	1000
24000-320612X1000	24000-320622X1000	stainless steel	Tr 32x6	28,547	28,882	23,9	1000
24000-360612X1000	24000-360622X1000	stainless steel	Tr 36x6	32,547	32,882	27,9	1000
24000-400712X1000	24000-400722X1000	stainless steel	Tr 40x7	36,020	36,375	30,5	1000

Order No. RH-thread whirled	Order No. LH-thread whirled	Main material	DxP	D1 min.	D1 max.	D2	L
24000-440712X1000	24000-440722X1000	stainless steel	Tr 44x7	40,020	40,375	34,5	1000
24000-500812X1000	24000-500822X1000	stainless steel	Tr 50x8	45,468	45,868	39,3	1000