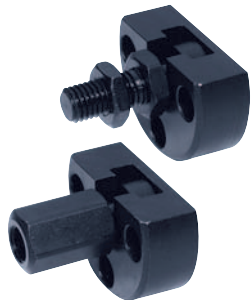


Quick-fit couplings

with radial offset compensation and mounting flange



Material:

Coupling part and steel flange.
Nut (DIN 439), grade 8.8.

Version:

Coupling part and flange tempered and phosphated.
Nut black oxidised.

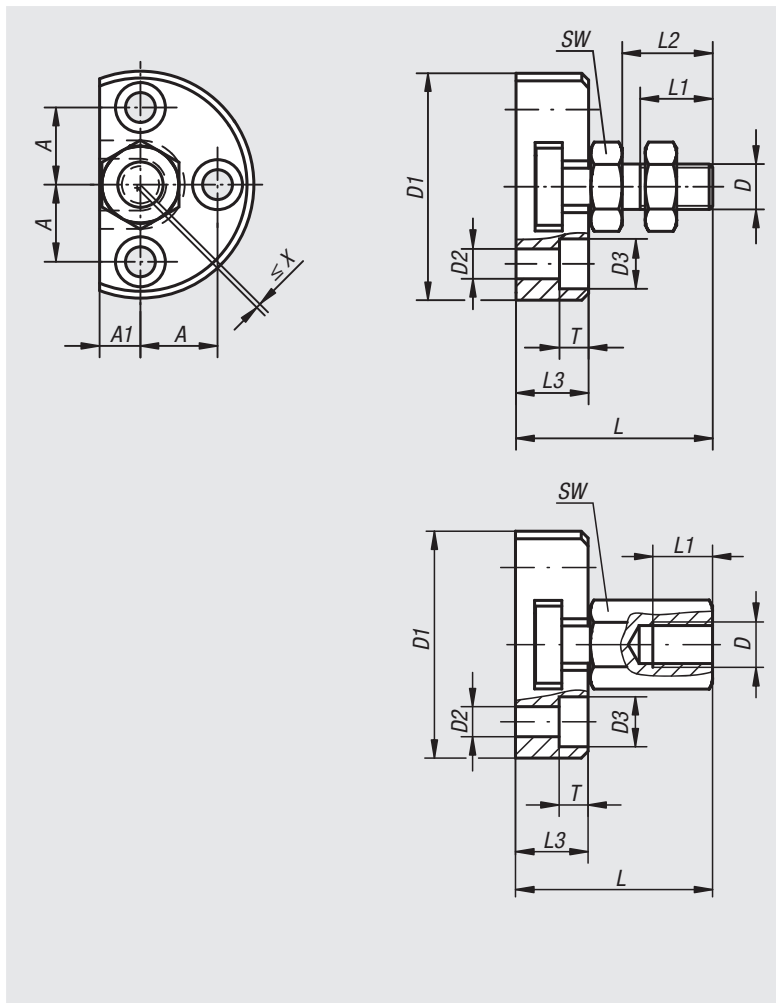
Sample order:

n1m 23452-20351

Note:

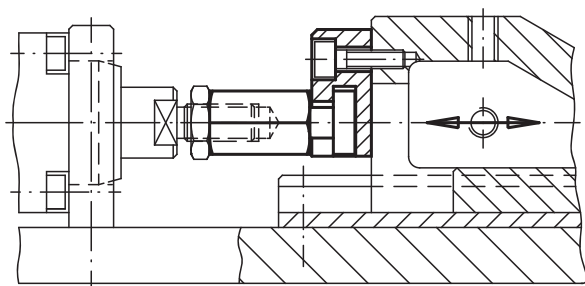
Space saving quick-fit couplings with radial offset compensation suitable for multiple applications, e.g. as a link between a piston rod and a linear-movement unit. Assembly and disassembly of this simple, solid and two-part coupling is with a T-slot, a manual re-adjustment is not necessary. The quick-fit coupling can be linked to all commonly used pneumatic and hydraulic lifting cylinders via the connecting thread.

The quick-fit coupling does not transmit any torque.



Quick-fit couplings

with radial offset compensation and mounting flange



Order No.	Version	D	D1	D2	D3	A	A1	L	L1 min.	L2	L3	T	SW	radial offset compensation X max.	Max. permissible tensile and compressive stress kN
23452-06	internal thread	M6	42	5,5	10	14	7	30,5	11	-	11	5,4	10	0,6	2,5
23452-08	internal thread	M8	48	6,6	11	16	8	35,5	13,5	-	13	6,4	13	0,7	4,5
23452-10	internal thread	M10	50	6,6	11	17	9	43,2	15	-	16	6,4	17	0,7	6,5
23452-101	internal thread	M10x1,25	50	6,6	11	17	9	43,2	15	-	16	6,4	17	0,7	6,5
23452-12	internal thread	M12	55	6,6	11	19	10	53,2	17,5	-	20,5	6,4	19	0,8	10
23452-121	internal thread	M12x1,25	55	6,6	11	19	10	53,2	17,5	-	20,5	6,4	19	0,8	10
23452-16	internal thread	M16	65	9	15	22,5	12,5	64	22	-	23	8,5	24	1	18
23452-161	internal thread	M16x1,5	65	9	15	22,5	12,5	64	22	-	23	8,5	24	1	18
23452-20	internal thread	M20	80	11	18	28	17	74	25	-	26	10	30	1	30
23452-201	internal thread	M20x1,5	80	11	18	28	17	74	25	-	26	10	30	1	30
23452-0614	external thread	M6	42	5,5	10	14	7	30,5	11	14	11	5,4	10	0,6	2,5
23452-0817	external thread	M8	48	6,6	11	16	8	35,5	13,5	17	13	6,4	13	0,7	4,5
23452-1020	external thread	M10	50	6,6	11	17	9	43,2	16	20	16	6,4	17	0,7	6,5
23452-10201	external thread	M10x1,25	50	6,6	11	17	9	43,2	16	20	16	6,4	17	0,7	6,5
23452-1225	external thread	M12	55	6,6	11	19	10	53,2	21	25	20,5	6,4	19	0,8	10
23452-12251	external thread	M12x1,25	55	6,6	11	19	10	53,2	21	25	20,5	6,4	19	0,8	10
23452-1630	external thread	M16	65	9	15	22,5	12,5	64	25	30	23	8,5	24	1	18
23452-16301	external thread	M16x1,5	65	9	15	22,5	12,5	64	25	30	23	8,5	24	1	18
23452-2035	external thread	M20	80	11	18	28	17	74	29	35	26	10	30	1	30
23452-20351	external thread	M20x1,5	80	11	18	28	17	74	29	35	26	10	30	1	30