

Keyless locking couplings Form E

short version



Material:

Steel.

Version:

Bright.

Sample order:

nlm 23356-1947

Note:

Keyless locking coupling with short axial width. The keyless locking coupling can be fully recessed in a hub connection.

- for shaft diameters from 19 to 85 mm
- for medium to high torques
- minimum axial offset when mounting
- self-centring

Assembly:

Lightly oil keyless locking coupling on the tapered faces and contact points of the shaft and hub. Do not use MoS2 or grease. Insert keyless locking coupling in the hub seat and slide onto shaft. Tighten screws crosswise in several increments to the defined tightening torque.

Dismantling: Remove all screws and screw into the extraction threads of the front flange. Tighten screws crosswise in several steps until the keyless locking coupling loosens.

Tolerances:

Shaft:

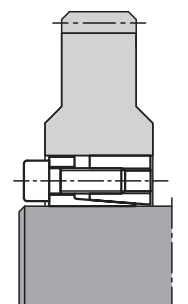
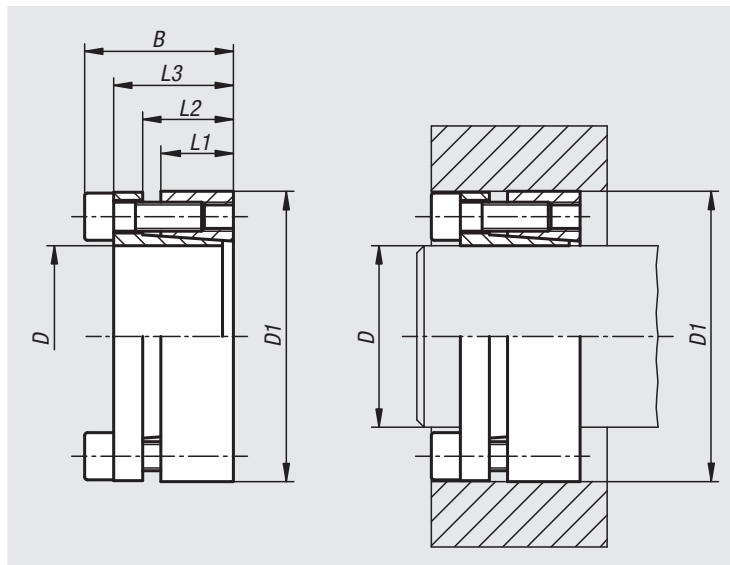
Recommended tolerance h8.

Surface quality $R_z \leq 16 \mu\text{m}$.

Hub:

Recommended tolerance H8.

Surface quality $R_z \leq 16 \mu\text{m}$.



Keyless locking couplings Form E

short version

Order No.	D	D1	B	L1	L2	L3	Max. torque M Nm with tightening torque MS	Max. axial force F kN with tightening torque MS
23356-1947	19	47	34	17	22	28	355	31
23356-2047	20	47	34	17	22	28	360	33
23356-2247	22	47	34	17	22	28	400	33
23356-2450	24	50	34	17	22	28	440	36
23356-2550	25	50	34	17	22	28	560	36
23356-2855	28	55	34	17	22	28	625	36
23356-3055	30	55	34	17	22	28	650	36
23356-3260	32	60	34	17	22	28	950	50
23356-3560	35	60	34	17	22	28	1050	50
23356-3865	38	65	34	17	22	28	1140	50
23356-4065	40	65	34	17	22	28	1200	50
23356-4275	42	75	41	20	25	33	2030	70
23356-4575	45	75	41	20	25	33	2180	70
23356-4880	48	80	41	20	24	33	2330	80
23356-5080	50	80	41	20	24	33	2430	85
23356-5585	55	85	41	20	24	33	3050	100
23356-6090	60	90	41	20	24	33	3350	100
23356-6595	65	95	41	20	24	33	4080	110
23356-70110	70	110	50	24	29	40	6280	160
23356-75115	75	115	50	24	29	40	6680	160
23356-80120	80	120	50	24	29	40	7130	160
23356-85125	85	125	50	24	29	40	8750	180

Order No.	Surface pressure on shaft P N/mm ²	Surface pressure on hub P N/mm ²	No. of screws	Tightening torque MS Nm
23356-1947	280	120	5 x M6	14
23356-2047	280	120	5 x M6	14
23356-2247	260	125	5 x M6	14
23356-2450	245	120	6 x M6	14
23356-2550	280	140	6 x M6	14
23356-2855	250	130	6 x M6	14
23356-3055	235	130	6 x M6	14
23356-3260	290	150	8 x M6	14
23356-3560	290	150	8 x M6	14
23356-3865	250	145	8 x M6	14
23356-4065	230	145	8 x M6	14
23356-4275	305	170	7 x M8	35
23356-4575	285	170	7 x M8	35
23356-4880	270	160	7 x M8	35
23356-5080	260	160	7 x M8	35
23356-5585	270	175	8 x M8	35
23356-6090	245	165	8 x M8	35
23356-6595	255	175	9 x M8	35
23356-70110	280	180	8 x M10	70
23356-75115	260	170	8 x M10	70
23356-80120	250	170	8 x M10	70
23356-85125	260	180	9 x M10	70