

Couplings
Rigid couplings
Keyless locking couplings
Cardan joints
Quick-fit couplings
Bearings
Seals

23000
Page 571

23022
Page 578

Metal bellows couplings with radial clamping hub

23002
Page 572

Elastomer dog couplings with radial clamping hub

23023
Page 579

Metal bellows couplings clamping with grub screw

23010
Page 573

Elastomer dog couplings clamping with grub screw

23030
Page 580

Beam couplings with radial clamping hub, aluminium

23010
Page 574

Oldham-type couplings with radial clamping hub

23032
Page 581

Beam couplings with radial clamping hub, stainless steel

23012
Page 575

Oldham-type couplings clamping with grub screw

23050
Page 582

Beam couplings with removable clamping hub, aluminium

23012
Page 576

Rigid couplings one-piece

23052
Page 583

Beam couplings with removable clamping hub, stainless steel

23021
Page 577

Rigid couplings two-piece

23200
Page 584

Elastomer dog couplings with conical hub and clamping ring (similar to DIN 69002)

Taper clamping bushes

23350
Page 590

Keyless locking couplings Form A for thin-walled hubs

23360-01
Page 608

Keyless locking couplings Form G stainless steel

23350-01
Page 592

Keyless locking couplings Form A stainless steel

23362
Page 611

Keyless locking couplings Form H for high torques

23351
Page 594

Keyless locking couplings Form B

23368
Page 613

Keyless locking couplings with central nut

23352
Page 596

Keyless locking couplings Form C with axial ring

23370
Page 614

Shaft-hub clamping sets stainless steel

23354
Page 598

Keyless locking couplings Form D compact design

23380
Page 617

Shrink discs Form A

23354-01
Page 600

Keyless locking couplings, Form D stainless steel

23380-01
Page 619

Shrink discs stainless steel Form A

23356
Page 603

Keyless locking couplings Form E short version

23382
Page 621

Shrink discs Form B

23358
Page 605

Keyless locking couplings Form F short version with axial ring

23403
Page 625

Universal joints single with plain bearing, DIN 808


23360
Page 607

Universal joints double with plain bearing, DIN 808

23404
Page 626

Universal joints double with plain bearing, DIN 808

23406
Page 627



Universal joints single with needle bearing, DIN 808

23407
Page 628



Universal joints double with needle bearing, DIN 808

23409
Page 629



Universal joints single with plain bearing, robust version DIN 808

23410
Page 630



Universal joints double with plain bearing, robust version DIN 808

23412
Page 631



Cardan shafts telescopic

23414
Page 632



Protective rubber sleeves for universal and cardan joints (single)

23415
Page 632



Protective rubber sleeves for universal and cardan joints (double)

23450
Page 635



Quick-fit couplings with radial offset compensation

23452
Page 637



Quick-fit couplings with radial offset compensation and mounting flange

23454
Page 638



Quick-fit couplings with angular and radial offset compensation

23500
Page 639



igubal® pillow block bearings

23679
Page 640



Guide bushes, ceramic 

23680
Page 642



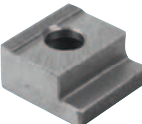
Guide bushes bronze, maintenance-free

23681
Page 643



Guide bushes DIN 9834 / ISO 9448, bronze, maintenance-free with collar

23682
Page 644



Retaining clips DIN 9832

23710
Page 647




Plain bearings plastic

23715
Page 648



Thrust washers plastic

23730
Page 650



Plain bearings cylindrical

23731
Page 652



Plain bearings with collar

23732
Page 653




Thrust washers

23760
Page 654



Plain bearing sintered bronze cylindrical

23761
Page 656



Plain bearing sintered bronze with collar

23800
Page 658



Deep groove ball bearing FAG single row

23800-01
Page 661



Deep groove ball bearings stainless steel, DIN 626

23800-03
Page 662



Ceramic ball bearings ZrO₂

23800-04
Page 663



Ceramic ball bearings Si₃N₄


23805
Page 664



Angular contact ball bearing FAG single-row


23806
Page 667



Axial angular contact ball bearing, steel double-row 

23806-01
Page 669



Axial angular contact ball bearing, steel double-row, with flange 

23815
Page 670



Spherical roller bearing FAG cylindrical bore

23820
Page 671



Cylinder roller bearing FAG with cage

23825
Page 672



Tapered roller bearing FAG single row

23830
Page 673



Axial ball bearing FAG single direction

23900
Page 674



O-rings

23915
Page 681



Rotary shaft lip seals DIN 3760

 New/Expanded Items

Metal bellows couplings

with radial clamping hub



Material:

Hub aluminium.
Bellows stainless steel.

Version:

Bright.

Sample order:

nIm 23000-012,
D1 = 6
D2 = 6

(The hubs are supplied pre-bored).

Note:

Radial clamping of the hub for short mounting times and easy installation even in difficult to reach spaces. Take note of the required clamping screw tightening torque.

Temperature range:

-40 °C to +200 °C

Assembly:

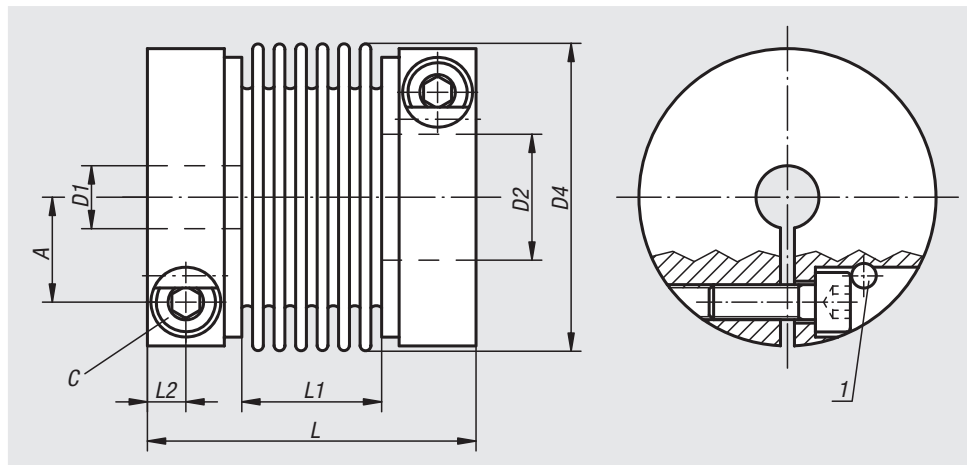
The shaft to hub bore fit should be a transition fit. The play should be min. 0.01 mm and max. 0.04 mm. i.e:

shaft \varnothing 28 k6

bore \varnothing 28 F6.

Bores smaller than D1/D2 min. are possible, however an optimal transfer of the nominal torque is no longer guaranteed.

As the metal bellows are made of thin stainless steel plate, special care should be taken during installation and removal. Damages to the bellows can render the coupling unusable.



On request:

Hub bores D1 and D2 with separate tolerance class or range.

Drawing reference:

1) EASY clamp system from size 20

Order No.	Size	Nominal torque Nm	Moment of inertia (10^{-3} kgm ²)	Torsion resistance Nm/arcmin	Max. axial shaft displacement \pm	Max. lateral shaft displacement	Axial spring stiffness N/mm	Lateral spring stiffness N/mm	Tightening torque of screws Nm
23000-001	1	1	0,0004	0,09	0,3	0,2	21	26	1
23000-004	4	4	0,003	0,46	0,4	0,2	35	65	2
23000-007	7	7	0,014	1,1	0,6	0,25	45	60	4
23000-012	12	12	0,03	2,05	0,7	0,25	40	70	7
23000-020	20	20	0,14	5,2	0,8	0,25	51	190	14
23000-060	60	60	0,29	8,7	0,9	0,3	49	260	35
23000-170	170	170	0,83	17,5	1	0,3	80	470	65
23000-400	400	400	2,42	47,1	1	0,3	100	640	115
23000-600	600	600	4,7	66,9	1	0,3	100	980	200

Order No.	D1/D2 predrilled	D1/D2 min.	D1/D2 max.	D4	A	C DIN 912-10.9	L	L1	L2
23000-001	3	3	6	16,5	4,6	M2,5	31,5	13,5	3,3
23000-004	4	5	10	24,5	7,5	M3	43,5	17,5	4,4
23000-007	5	6	17	34	11	M4	57	29	5
23000-012	5	6	19	39,5	13	M5	62	29	6
23000-020	7	9	30	56	19	M6	70	30	7,5
23000-060	12	18	34	66	22	M8	77	33	8,5
23000-170	15	22	43	82	28,5	M10	92	40	10,5
23000-400	24	34	55	101	35	M12	106	48	12
23000-600	31	35	70	122	43,5	M14	120	52	13,5