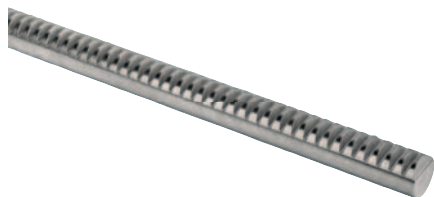


Gear racks in steel

toothing milled, straight teeth, engagement angle 20°



Material:

Steel 1.0503 (C45).

Version:

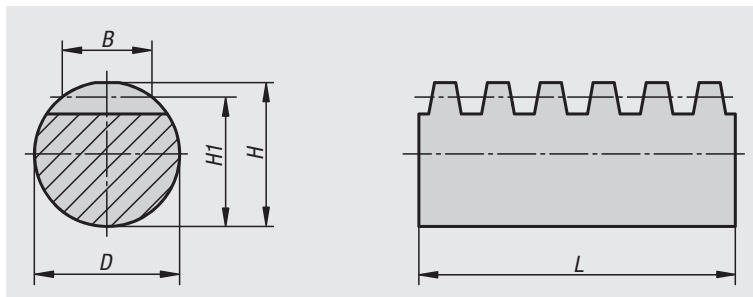
Milled toothing, straight teeth.
Engagement angle 20°, bright.
Outside diameter ground, tolerance h6.

Sample order:

nIm 22425-010060X500

Note:

The gear rack teeth are cut using a hob mill.
This results in minus tolerances for dimensions H and H1:
up to module 2: -0.2 mm.
module 2.5 to 3: -0.3 mm.



Order No.	Module	B	D	H	H1	L
22425-010060X500	1	6	10	10	9	500
22425-010060X1000	1	6	10	10	9	1000
22425-010060X2000	1	6	10	10	9	2000
22425-015090X500	1,5	9	15	15	13,5	500
22425-015090X1000	1,5	9	15	15	13,5	1000
22425-015090X2000	1,5	9	15	15	13,5	2000
22425-020120X500	2	12	20	20	18	500
22425-020120X1000	2	12	20	20	18	1000
22425-020120X2000	2	12	20	20	18	2000
22425-025150X500	2,5	15	25	25	22,5	500
22425-025150X1000	2,5	15	25	25	22,5	1000
22425-025150X2000	2,5	15	25	25	22,5	2000
22425-030180X500	3	18	30	30	27	500
22425-030180X1000	3	18	30	30	27	1000
22425-030180X2000	3	18	30	30	27	2000