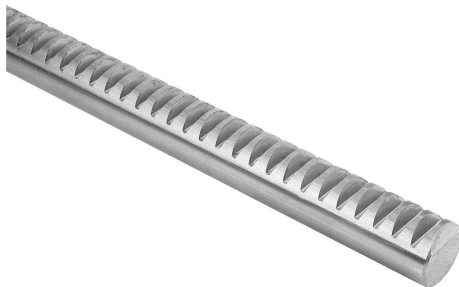


Item description/product images



Description

Material:

Stainless steel 1.4305.

Version:

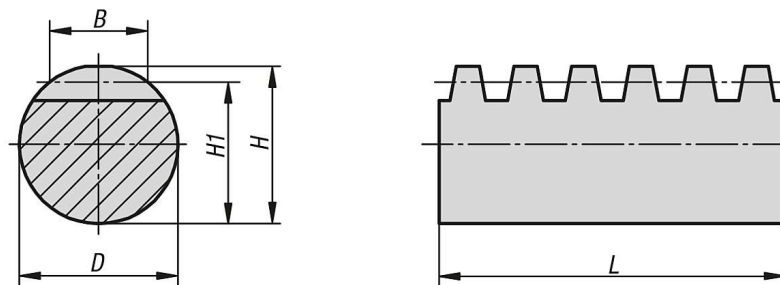
Milled tothing, straight teeth
engagement angle 20°, bright.
Outside diameter extruded, tolerance h9.

Note:

The gear racks are cut so that there remains a complete tooth at the ends. This means that the rack length remains within the ± nominal dimension range.
Example: Module 1, the tooth pitch is $1.0 \times \pi \approx 3.14$ mm.

The gear racks are cut using overhead mills. This results in minus tolerances for dimensions H and H1:
up to module 2: -0.2 mm.
module 2.5 to 3: -0.3 mm.

Drawings



Overview of items

Order No.	Module	B	D	H	H1	L Nom. length
22425-20-110060X1000	1	6	10	10	9	1000
22425-20-110060X2000	1	6	10	10	9	2000
22425-20-115090X1000	1,5	9	15	15	13,5	1000
22425-20-115090X2000	1,5	9	15	15	13,5	2000
22425-20-120120X1000	2	12	20	20	18	1000
22425-20-120120X2000	2	12	20	20	18	2000
22425-20-125150X1000	2,5	15	25	25	22,5	1000
22425-20-125150X2000	2,5	15	25	25	22,5	2000
22425-20-130180X1000	3	18	30	30	27	1000
22425-20-130180X2000	3	18	30	30	27	2000
22425-20-140240X1000	4	24	40	40	36	1000
22425-20-140240X2000	4	24	40	40	36	2000