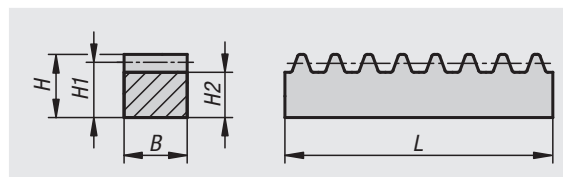
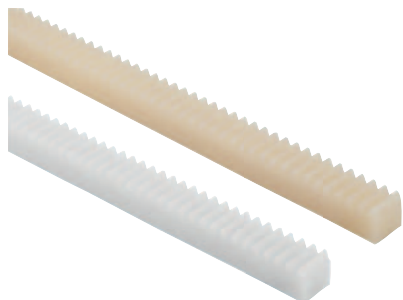


Gear racks, plastic

injection moulded, straight teeth, engagement angle 20°



Material:

Polyacetal (POM) or polyketone (PK).

Version:

Injection moulded, straight teeth. Engagement angle 20°.

Polyacetal, white.

Polyketone, ivory tone.

Sample order:

nIm 22422-10500404250

Note:

Polyacetal: Standard material with high hardness grade and low coefficient of friction.

Polyketone: Material with significantly longer service life, higher power transmission and greater security against tooth breakage due to the extraordinarily high wear resistance and very good tribological properties.

Can be used under water and other media.

Due to the material properties, plastic gear racks are not straightened.

L = nominal length 250 mm. The actual length is roughly a whole multiple of the pitch.

Temperature range:

-40 °C to +140 °C (taking amount and duration of load into account).

Order No. polyacetal	Order No. polyketone	Module	B	H	H1	H2	L
22422-10500404250	22422-20500404250	0,5	4	4,5	4	3,4	250
22422-10500406250	22422-20500406250	0,5	4	6	5,5	4,9	250
22422-10700606250	22422-20700606250	0,7	6	6,7	6	5,1	250
22422-11000909250	22422-21000909250	1	9	9	8	6,8	250
22422-11251011250	22422-21251011250	1,25	10	11	9,75	8,3	250
22422-11501212250	22422-21501212250	1,5	12	12	10,5	8,75	250
22422-12001511250	22422-22001511250	2	15,4	11	9	6,6	250
22422-13001915250	22422-23001915250	3	19,4	15	12	8,5	250