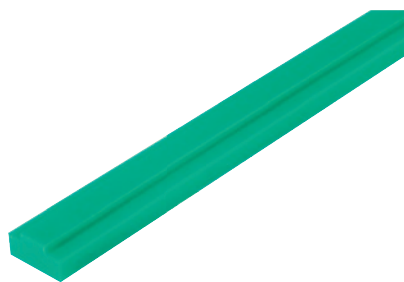


Glide rails PE-UHMW for roller chains DIN ISO 606

**Material:**

Polyethylene PE-UHMW (ultra-high molecular weight polyethylene).

Version:

Green.

Sample order:

nln 22282-0812010X2000

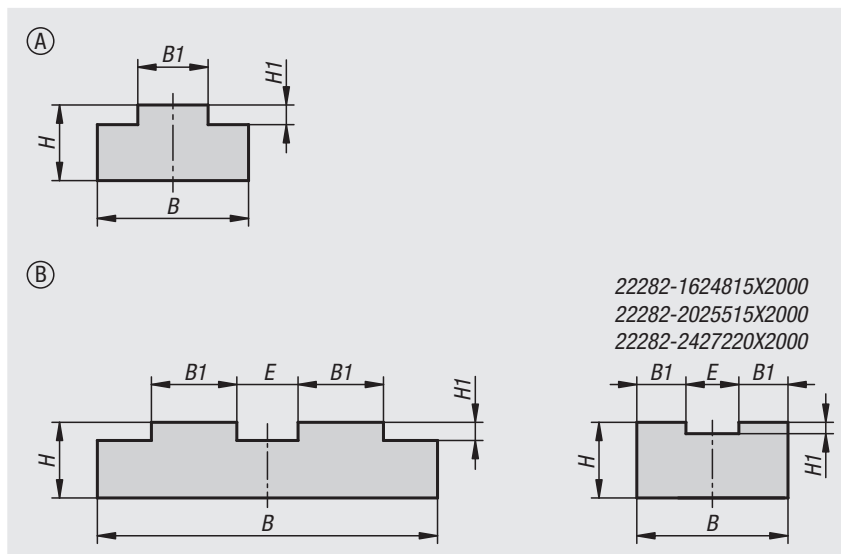
Note:

Glide rails for roller chains as defined in DIN ISO 606. These support and guide the roller chains on the return side, thus extending useful life by significantly reducing wear on the roller chains. They reduce vibrations and noise in the chain drive.

These glide rails have high abrasion and wear resistance. They are maintenance-free, acid-proof and have high chemical resistance.

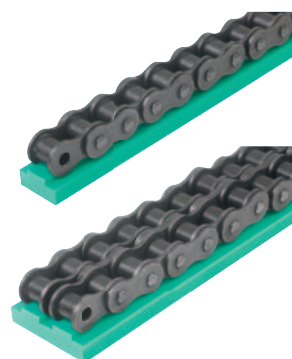
Temperature range:

-200 °C to +60 °C (briefly up to +80 °C).

**Assembly:**

The glide rails can be fastened to the system by threaded holes or counterbores. Not suitable for gluing.

The glide rails must be mounted so that the material is allowed to expand. A property of thermoplastic materials is that they expand or contract more than metals when there are temperature variations.



Order No.	Form	ISO No.	Division inches	B	B1	E	H	H1	L
22282-0611510X2000	A	06 B-1	3/8X7/32	15	5,4	-	10	1,5	2000
22282-0812010X2000	A	08 B-1	1/2X5/16	20	7,4	-	10	2,2	2000
22282-0812015X2000	A	08 B-1	1/2X5/16	20	7,4	-	15	2,2	2000
22282-0812020X2000	A	08 B-1	1/2X5/16	20	7,4	-	20	2,2	2000
22282-1012010X2000	A	10 B-1	5/8X3/8	20	9,3	-	10	2,6	2000
22282-1012015X2000	A	10 B-1	5/8X3/8	20	9,3	-	15	2,6	2000
22282-1012020X2000	A	10 B-1	5/8X3/8	20	9,3	-	20	2,6	2000
22282-1212510X2000	A	12 B-1	3/4X7/16	25	11,3	-	10	2,4	2000
22282-1212515X2000	A	12 B-1	3/4X7/16	25	11,3	-	15	2,4	2000
22282-1212520X2000	A	12 B-1	3/4X7/16	25	11,3	-	20	2,4	2000
22282-1614015X2000	A	16 B-1	1X17mm	40	16	-	15	3,5	2000
22282-1614020X2000	A	16 B-1	1X17mm	40	16	-	20	3,5	2000
22282-2014515X2000	A	20 B-1	1 1/4X3/4	45	18	-	15	4,2	2000
22282-2416015X2000	A	24 B-1	1 1/2X1	60	24	-	15	5,5	2000
22282-0622510X2000	B	06 B-2	3/8X7/32	25	5,4	4,8	10	1,5	2000
22282-0823510X2000	B	08 B-2	1/2X5/16	35	7,4	6,4	10	2,2	2000
22282-0823515X2000	B	08 B-2	1/2X5/16	35	7,4	6,4	15	2,2	2000
22282-0823520X2000	B	08 B-2	1/2X5/16	35	7,4	6,4	20	2,2	2000
22282-1024010X2000	B	10 B-2	5/8X3/8	40	9,3	7,1	10	2,6	2000
22282-1224510X2000	B	12 B-2	3/4X7/16	45	11,3	8,1	10	2,4	2000
22282-1624815X2000	B	16 B-2	1X17mm	48	16	16	15	3,5	2000
22282-2025515X2000	B	20 B-1	1 1/4X3/4	55	18	19	15	4,2	2000
22282-2427220X2000	B	24 B-1	1 1/2X1	72	24	24	20	5,5	2000