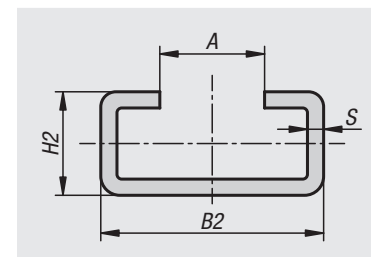
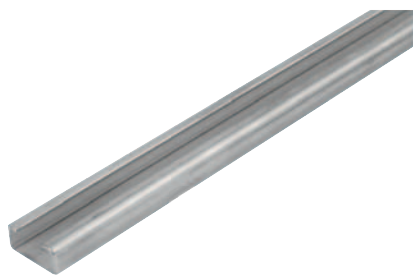


C profiles steel or stainless steel for glide rails

**Material:**

Steel or stainless steel A2.

Version:

Steel electro zinc-plated. Stainless steel bright.

Sample order:

nIm 22282-10-03X2000

Note:

The C profiles are used for fastening to the system substructure and they protect the glide rails from lateral forces and torsion. The glide rails can be simply pushed into the C profiles. Because the glide rails are positioned loosely in the C profiles, they can expand freely when there are temperature variations.

Order No.	Form	Main material	A	B2	H2	L	S
22282-10-01X2000	C1	steel	17,5	24	5,2	2000	1
22282-10-03X2000	C3	steel	10	20	10	2000	1,5
22282-10-05X2000	C5	steel	14	28	12	2000	2
22282-10-09X2000	C9	steel	22	38	18	2000	2,5
22282-10-12X2000	C12	steel	36	60	20	2000	2,5
22282-10-101X2000	C1	stainless steel	17,5	24	5,2	2000	1
22282-10-103X2000	C3	stainless steel	10	20	10	2000	1,5
22282-10-105X2000	C5	stainless steel	14	28	12	2000	2
22282-10-109X2000	C9	stainless steel	22	38	18	2000	2,5
22282-10-112X2000	C12	stainless steel	36	60	20	2000	2,5