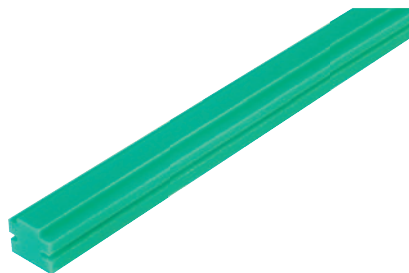


## Glide rails PE-UHMW for roller chains DIN ISO 606

for C profiles



**Material:**

Polyethylene PE-UHMW (ultra-high molecular weight polyethylene).

**Version:**

Green.

**Sample order:**

nIm 22282-05-0811714X2000

**Note:**

Glide rails for roller chains as defined in DIN ISO 606. These support and guide the roller chains on the return side, thus extending useful life by significantly reducing wear on the roller chains. They reduce vibrations and noise in the chain drive.

These glide rails have high abrasion and wear resistance. They are maintenance-free, acid-proof and have high chemical resistance.

The additional C profiles are used for fastening to the system substructure and they protect the glide rails from lateral forces and torsion.

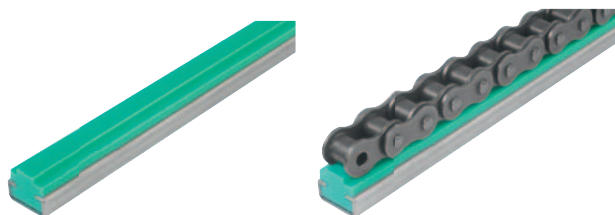
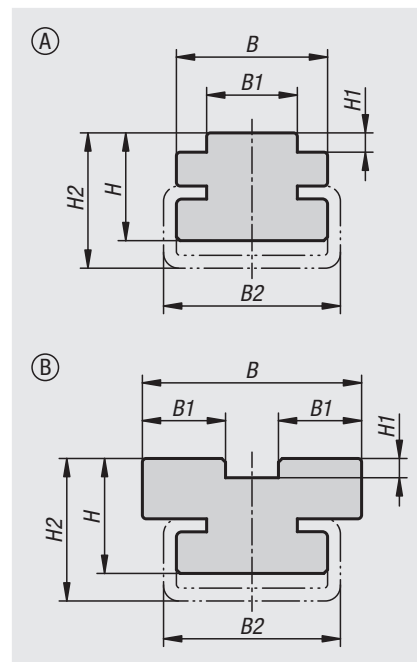
**Temperature range:**

-200 °C to +60 °C (briefly up to +80 °C).

**Assembly:**

The glide rails are pushed into the C profiles fastened to the system.

The glide rails must be mounted so that the material is allowed to expand. A property of thermoplastic materials is that they expand or contract more than metals when there are temperature variations.



Order No.	Form	ISO No.	Division inches	B	B1	B2	H	H1	H2	L	matching C-profile
22282-05-0812010X2000	A	08 B-1	1/2X5/16	20	7,4	24	10	2,2	11	2000	C1
22282-05-0811714X2000	A	08 B-1	1/2X5/16	17	7,4	20	14	2,2	17	2000	C3
22282-05-1011714X2000	A	10 B-1	5/8X3/8	17	9,3	20	14	2,6	17	2000	C3
22282-05-1212014X2000	A	12 B-1	3/4X7/16	20	11,3	20	14	2,4	17	2000	C3
22282-05-1212414X2000	A	12 B-1	3/4X7/16	24	11,3	28	14	2,4	18	2000	C5
22282-05-1612414X2000	A	16 B-1	1X17mm	24	16	28	14	3,5	18	2000	C5
22282-05-2012814X2000	A	20 B-1	1 1/4X3/4	28	18	28	14	4,2	18	2000	C5
22282-05-2413323X2000	A	24 B-1	1 1/2X1	33	24	38	23	5,5	30	2000	C9
22282-05-0822114X2000	B	08 B-2	1/2X5/16	21,2	7,4	20	14	2,2	17	2000	C3
22282-05-1022514X2000	B	10 B-2	5/8X3/8	25,7	9,3	20	14	2,6	17	2000	C3
22282-05-1223015X2000	B	12 B-2	3/4X7/16	30,7	11,3	28	15	2,4	20	2000	C5
22282-05-1624820X2000	B	16 B-2	1X17mm	48	16	38	20	3,5	27	2000	C9
22282-05-2025522X2000	B	20 B-2	1 1/4X3/4	55	18	60	22	4,2	30	2000	C12
22282-05-2427225X2000	B	24 B-2	1 1/2X1	72	24	60	25	5,5	35	2000	C12