

Angle bracket for clamping elements



Material:

Steel.

Version:

Electro zinc-plated (size 5 painted).

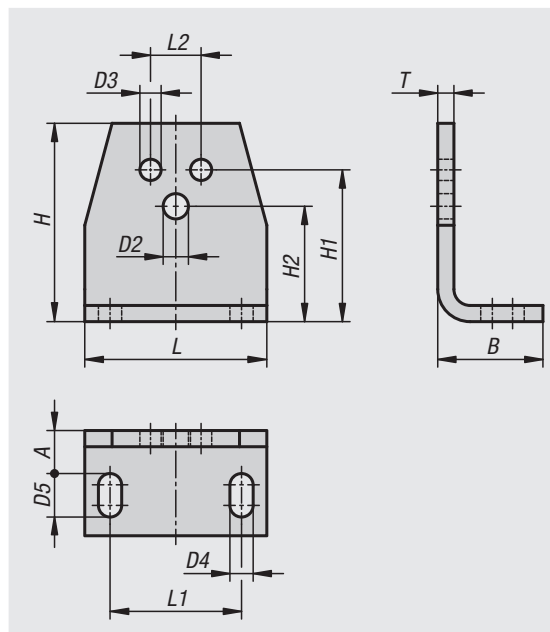
Sample order:

nlm 22281-20-1

Note:

The angle bracket enables easy mounting of the clamping elements directly on the machine component. The bore D2 serves to hold the clamping element. The clamping element can be mounted on the front or rear of the bracket.

The bores D3 enable the bracket to be used for other applications.



Order No.	Size	A	B	D2	D3	D4	D5	H	H1	H2	L	L1	L2	T	Suitable for clamping element size
22281-20-1	1	12	30	6,5	5,5	7	13	46	35	27	50	30	10	4	1
22281-20-2	2	14	32	8,5	6,5	7	13	58	44	34	60	40	12	6	2
22281-20-3	3	16	38	10,5	8,5	9,5	16	75	55	45	70	50	20	6	3
22281-20-4	4	21	52	12,5	10,5	11,5	22	98	75	57	90	65	25	8	4
22281-20-5	5	21	55	16,5	12,5	14	24	116	85	66	110	80	35	8	5