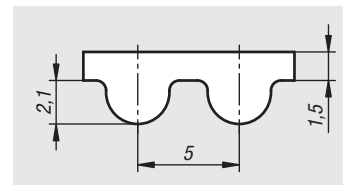
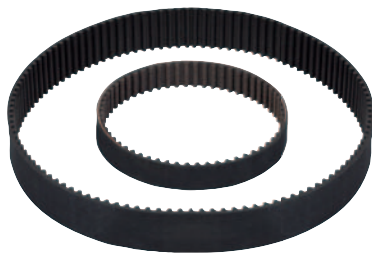


Toothed belt

profile HTD 5M



Material:

Belt back and belt teeth CR.
Tension cords Glascord.
Tooth covering mesh polyamide.

Sample order:

nIm 22062-0515X0275

Note:

Endless toothed belts with an arched profile as per ISO 13050 with metric pitch. The rounded shape of the tooth contour provides a particularly high degree of safety against incorrect tooth interlocking, combined with a very rounded tooth mesh.

Operating noise is significantly reduced by the rounded tooth mesh.

The toothed belts are robust, economical and versatile.

Temperature range:

From -20°C to +100°C

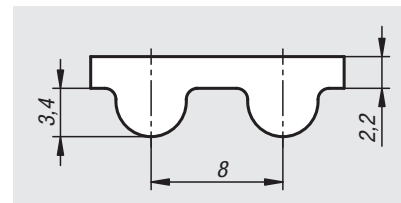
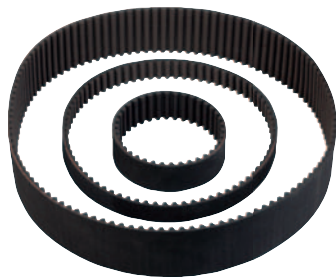
Features:

- Belt speed v_{max} perm. 50 m/s
- Transmissible power up to 8.42 kW
- Permissible speed up to 14000 rpm
- Low-noise and low-maintenance
- Very good chemical resistance, particularly against oils, greases and fuels
- Accurate positioning and angles

Order No. belt width 15	Order No. belt width 25	No. of teeth	Effective length
22062-0515X0275	22062-0525X0275	55	275
22062-0515X0300	22062-0525X0300	60	300
22062-0515X0330	22062-0525X0330	66	330
22062-0515X0350	22062-0525X0350	70	350
22062-0515X0375	22062-0525X0375	75	375
22062-0515X0385	22062-0525X0385	77	385
22062-0515X0400	22062-0525X0400	80	400
22062-0515X0425	22062-0525X0425	85	425
22062-0515X0450	22062-0525X0450	90	450
22062-0515X0460	22062-0525X0460	92	460
22062-0515X0475	22062-0525X0475	95	475
22062-0515X0500	22062-0525X0500	100	500
22062-0515X0535	22062-0525X0535	107	535
22062-0515X0550	22062-0525X0550	110	550
22062-0515X0565	22062-0525X0565	113	565
22062-0515X0600	22062-0525X0600	120	600
22062-0515X0615	22062-0525X0615	123	615
22062-0515X0620	22062-0525X0620	124	620
22062-0515X0630	22062-0525X0630	126	630
22062-0515X0635	22062-0525X0635	127	635
22062-0515X0665	22062-0525X0665	133	665
22062-0515X0700	22062-0525X0700	140	700
22062-0515X0710	22062-0525X0710	142	710
22062-0515X0740	22062-0525X0740	148	740
22062-0515X0755	22062-0525X0755	151	755
22062-0515X0800	22062-0525X0800	160	800
22062-0515X0835	22062-0525X0835	167	835
22062-0515X0840	22062-0525X0840	168	840
22062-0515X0860	22062-0525X0860	172	860
22062-0515X0890	22062-0525X0890	178	890
22062-0515X0900	22062-0525X0900	180	900
22062-0515X0925	22062-0525X0925	185	925
22062-0515X0950	22062-0525X0950	190	950
22062-0515X1000	22062-0525X1000	200	1000
22062-0515X1050	22062-0525X1050	210	1050
22062-0515X1125	22062-0525X1125	225	1125
22062-0515X1200	22062-0525X1200	240	1200
22062-0515X1270	22062-0525X1270	254	1270
22062-0515X1420	22062-0525X1420	284	1420
22062-0515X1500	22062-0525X1500	300	1500
22062-0515X1595	22062-0525X1595	319	1595
22062-0515X1690	22062-0525X1690	338	1690
22062-0515X1800	22062-0525X1800	360	1800
22062-0515X2000	22062-0525X2000	400	2000

Toothed belt

profile HTD 8M



Material:

Belt back and belt teeth CR.
Tension cords Glascord.
Tooth covering mesh polyamide.

Sample order:

nlm 22062-0820X0288

Note:

Endless toothed belts with an arched profile as per ISO 13050 with metric pitch. The rounded shape of the tooth contour provides a particularly high degree of safety against incorrect tooth interlocking, combined with a very rounded tooth mesh.

Operating noise is significantly reduced by the rounded tooth mesh.

The toothed belts are robust, economical and versatile.

Temperature range:

From -20°C to +100°C

Features:

- Belt speed v_{max} perm. 50 m/s
- Transmissible power up to 99.1 kW
- Permissible speed up to 6000 rpm
- Low-noise and low-maintenance
- Very good chemical resistance, particularly against oils, greases and fuels
- Accurate positioning and angles

Order No. belt width 20	Order No. belt width 30	Order No. belt width 50	No. of teeth	Effective length
22062-0820X0288	22062-0830X0288	22062-0850X0288	36	288
22062-0820X0304	22062-0830X0304	22062-0850X0304	38	304
22062-0820X0352	22062-0830X0352	22062-0850X0352	44	352
22062-0820X0376	22062-0830X0376	22062-0850X0376	47	376
22062-0820X0400	22062-0830X0400	22062-0850X0400	50	400
22062-0820X0416	22062-0830X0416	22062-0850X0416	52	416
22062-0820X0424	22062-0830X0424	22062-0850X0424	53	424
22062-0820X0480	22062-0830X0480	22062-0850X0480	60	480
22062-0820X0560	22062-0830X0560	22062-0850X0560	70	560
22062-0820X0600	22062-0830X0600	22062-0850X0600	75	600
22062-0820X0640	22062-0830X0640	22062-0850X0640	80	640
22062-0820X0656	22062-0830X0656	22062-0850X0656	82	656
22062-0820X0688	22062-0830X0688	22062-0850X0688	86	688
22062-0820X0720	22062-0830X0720	22062-0850X0720	90	720
22062-0820X0784	22062-0830X0784	22062-0850X0784	98	784
22062-0820X0800	22062-0830X0800	22062-0850X0800	100	800
22062-0820X0880	22062-0830X0880	22062-0850X0880	110	880
22062-0820X0920	22062-0830X0920	22062-0850X0920	115	920
22062-0820X0960	22062-0830X0960	22062-0850X0960	120	960
22062-0820X1040	22062-0830X1040	22062-0850X1040	130	1040
22062-0820X1120	22062-0830X1120	22062-0850X1120	140	1120
22062-0820X1160	22062-0830X1160	22062-0850X1160	145	1160
22062-0820X1200	22062-0830X1200	22062-0850X1200	150	1200
22062-0820X1280	22062-0830X1280	22062-0850X1280	160	1280
22062-0820X1304	22062-0830X1304	22062-0850X1304	163	1304
22062-0820X1360	22062-0830X1360	22062-0850X1360	170	1360
22062-0820X1424	22062-0830X1424	22062-0850X1424	178	1424
22062-0820X1440	22062-0830X1440	22062-0850X1440	180	1440
22062-0820X1520	22062-0830X1520	22062-0850X1520	190	1520
22062-0820X1600	22062-0830X1600	22062-0850X1600	200	1600
22062-0820X1760	22062-0830X1760	22062-0850X1760	220	1760
22062-0820X1800	22062-0830X1800	22062-0850X1800	225	1800
22062-0820X2000	22062-0830X2000	22062-0850X2000	250	2000
22062-0820X2248	22062-0830X2248	22062-0850X2248	281	2248
22062-0820X2400	22062-0830X2400	22062-0850X2400	300	2400
22062-0820X2600	22062-0830X2600	22062-0850X2600	325	2600
22062-0820X2800	22062-0830X2800	22062-0850X2800	350	2800
22062-0820X3008	22062-0830X3008	22062-0850X3008	376	3008
22062-0820X3280	22062-0830X3280	22062-0850X3280	410	3280
22062-0820X3408	22062-0830X3408	22062-0850X3408	426	3408
22062-0820X3808	22062-0830X3808	22062-0850X3808	476	3808