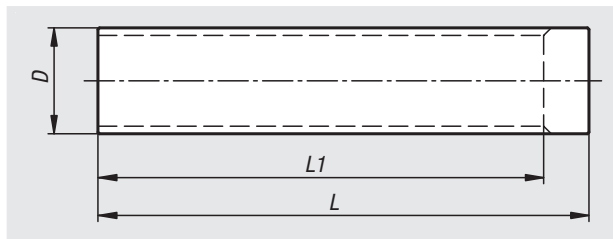
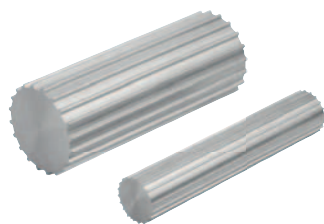


# Splined shafts

AT profile



**Material:**  
Aluminium.

**Version:**  
Bright.

**Sample order:**  
nlm 22008-05012

**Note:**  
Standard AT-profile with metric pitch (trapezoidal toothing). For manufacturing your own toothed wheels

## Splined shafts, AT5 profile

Order No.	Profile	No. of teeth	D	L	L1
22008-05012	AT5	12	17,85	140	125
22008-05013	AT5	13	19,45	140	125
22008-05014	AT5	14	21,05	140	132
22008-05015	AT5	15	22,65	140	132
22008-05016	AT5	16	24,2	140	140
22008-05017	AT5	17	25,8	140	140
22008-05018	AT5	18	27,4	140	140
22008-05019	AT5	19	29	140	140
22008-05020	AT5	20	30,6	160	160
22008-05021	AT5	21	32,3	160	160
22008-05022	AT5	22	33,85	160	160
22008-05023	AT5	23	35,45	160	160
22008-05024	AT5	24	37	160	160
22008-05025	AT5	25	38,6	160	160
22008-05026	AT5	26	40,2	160	160
22008-05027	AT5	27	41,8	160	160
22008-05028	AT5	28	43,35	160	160
22008-05030	AT5	30	46,55	160	160
22008-05032	AT5	32	49,7	160	160
22008-05034	AT5	34	52,85	160	160
22008-05036	AT5	36	56,05	160	160
22008-05038	AT5	38	59,25	160	160
22008-05040	AT5	40	62,45	160	160
22008-05042	AT5	42	65,6	160	160
22008-05044	AT5	44	68,8	160	160
22008-05046	AT5	46	72	160	160
22008-05048	AT5	48	75,15	160	160
22008-05052	AT5	52	81,55	160	160
22008-05056	AT5	56	87,9	160	160
22008-05058	AT5	58	91,1	160	160
22008-05060	AT5	60	94,25	160	160
22008-05064	AT5	64	100,65	160	160
22008-05072	AT5	72	113,25	160	160

## Splined shafts, AT10 profile

Order No.	Profile	No. of teeth	D	L	L1
22008-10015	AT10	15	45,9	160	160
22008-10016	AT10	16	49,05	160	160
22008-10017	AT10	17	52,25	160	160
22008-10018	AT10	18	55,45	160	160
22008-10019	AT10	19	58,6	160	160
22008-10020	AT10	20	61,8	160	160
22008-10021	AT10	21	65	160	160
22008-10022	AT10	22	68,15	160	160
22008-10023	AT10	23	71,35	160	160
22008-10024	AT10	24	74,55	160	160
22008-10025	AT10	25	77,7	160	160
22008-10026	AT10	26	80,9	160	160
22008-10027	AT10	27	84,1	160	160
22008-10028	AT10	28	87,25	160	160
22008-10030	AT10	30	93,65	160	160
22008-10032	AT10	32	100	160	160
22008-10034	AT10	34	106,4	160	160
22008-10036	AT10	36	112,75	160	160
22008-10038	AT10	38	119,1	160	160
22008-10040	AT10	40	125,45	160	160
22008-10042	AT10	42	131,85	160	160
22008-10044	AT10	44	138,2	160	160
22008-10046	AT10	46	144,55	160	160
22008-10048	AT10	48	150,95	160	160
22008-10052	AT10	52	163,65	160	160
22008-10056	AT10	56	176,4	160	160
22008-10058	AT10	58	182,75	160	160
22008-10060	AT10	60	189,1	160	160
22008-10070	AT10	70	220,95	160	160