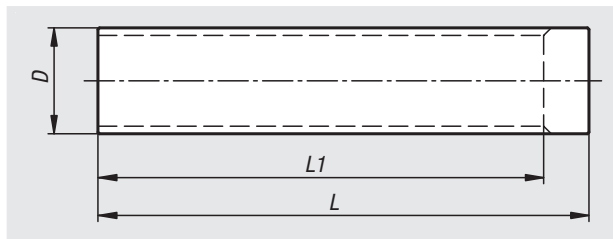
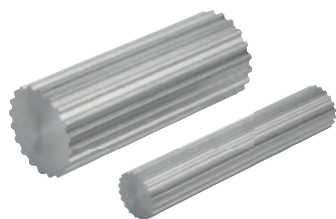


Splined shafts

T profile



Splined shafts, T5 profile

Order No.	Profile	No. of teeth	D	L	L1
22007-05010	T5	10	15,05	140	125
22007-05011	T5	11	16,65	140	125
22007-05012	T5	12	18,25	140	125
22007-05013	T5	13	19,85	140	125
22007-05014	T5	14	21,45	140	132
22007-05015	T5	15	23,05	140	132
22007-05016	T5	16	24,6	140	140
22007-05017	T5	17	26,2	140	140
22007-05018	T5	18	27,8	140	140
22007-05019	T5	19	29,4	140	140
22007-05020	T5	20	31	160	160
22007-05021	T5	21	32,7	160	160
22007-05022	T5	22	34,15	160	160
22007-05023	T5	23	35,85	160	160
22007-05024	T5	24	37,4	160	160
22007-05025	T5	25	38,95	160	160
22007-05026	T5	26	40,6	160	160
22007-05027	T5	27	42,2	160	160
22007-05028	T5	28	43,75	160	160
22007-05029	T5	29	45,35	160	160
22007-05030	T5	30	46,95	160	160
22007-05032	T5	32	50,1	160	160
22007-05034	T5	34	53,25	160	160
22007-05035	T5	35	54,85	160	160
22007-05036	T5	36	56,45	160	160
22007-05037	T5	37	58,06	160	160
22007-05038	T5	38	59,65	160	160
22007-05040	T5	40	62,85	160	160
22007-05042	T5	42	66	160	160
22007-05044	T5	44	69,2	160	160
22007-05045	T5	45	70,8	160	160
22007-05046	T5	46	72,4	160	160
22007-05048	T5	48	75,55	160	160
22007-05050	T5	50	78,75	160	160
22007-05060	T5	60	94,65	160	160
22007-05072	T5	72	113,75	160	160
22007-05080	T5	80	126,48	160	160
22007-05090	T5	90	142,4	160	160
22007-05100	T5	100	158,31	160	160

Material:
Aluminium.

Version:
Bright.

Sample order:
nlm 22007-05010

Note:
Standard T-profile to DIN 7721-2 with metric pitch (trapezoidal toothing). For manufacturing your own toothed wheels

Splined shafts, T10 profile

Order No.	Profile	No. of teeth	D	L	L1
22007-10010	T10	10	29,98	140	140
22007-10011	T10	11	33,16	140	140
22007-10012	T10	12	36,35	140	140
22007-10013	T10	13	39,5	140	140
22007-10014	T10	14	42,7	160	160
22007-10015	T10	15	45,9	160	160
22007-10016	T10	16	49,1	160	160
22007-10017	T10	17	52,25	160	160
22007-10018	T10	18	55,45	160	160
22007-10019	T10	19	58,65	160	160
22007-10020	T10	20	61,8	160	160
22007-10021	T10	21	65	160	160
22007-10022	T10	22	68,2	160	160
22007-10023	T10	23	71,35	160	160
22007-10024	T10	24	74,55	160	160
22007-10026	T10	26	80,9	160	160
22007-10028	T10	28	87,25	160	160
22007-10030	T10	30	93,65	160	160
22007-10032	T10	32	100	160	160
22007-10034	T10	34	106,4	160	160
22007-10036	T10	36	112,75	160	160
22007-10038	T10	38	119,1	160	160
22007-10040	T10	40	125,45	160	160
22007-10045	T10	45	141,4	160	160
22007-10048	T10	48	150,95	160	160
22007-10060	T10	60	189,1	160	160
22007-10072	T10	72	227,29	160	160