

Item description/product images



Description

Material:

Bush ball-bearing steel 1.3505.  
Ball ball-bearing steel 1.3505.

Note:

The steel recirculating ball bushes are components that can be used in tool and die making. The bushes help to enable precise movements, positioning and guiding of moving parts.

Simple installation in an H7 bore.

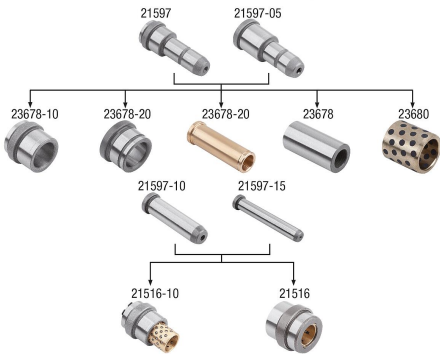
Temperature range:

max. 180°C.

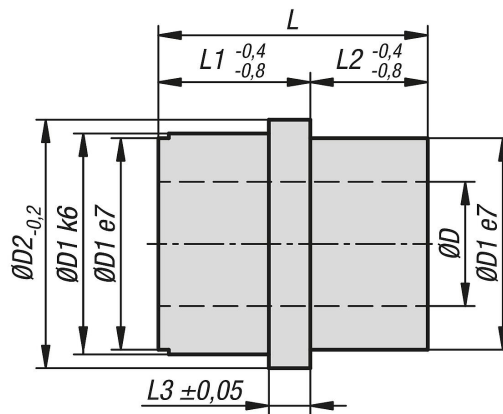
Accessory:

21516-15 ball cage brass.

Possible combinations of the various standard parts



Drawings



Overview of items

Order No.	D	D1	D2	L	L1	L2	L3
21516-1712	12	24	28	26	17	9	6
21516-2218	18	32	36	39	22	17	6
21516-1724	24	39	43	29	17	12	6
21516-2230	30	50	54	39	22	17	6

