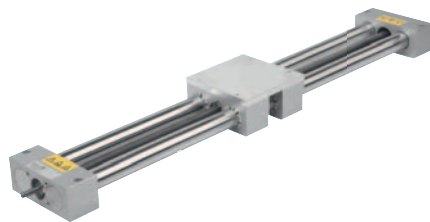


## Double tube linear actuator

with mounting bracket



**Material:**

Housing aluminium.  
Precision tube nickel plated steel.  
Trapezoidal thread spindle steel.

**Sample order:**

nIm 21250-01-030X800

**Note:**

The double-tube linear actuator can be operated manually or electrically. Due to the short duty cycle, the units can be adjusted several times a day at low speed and with high stability. Width, length and height adjustment possible.

**Temperature range:**

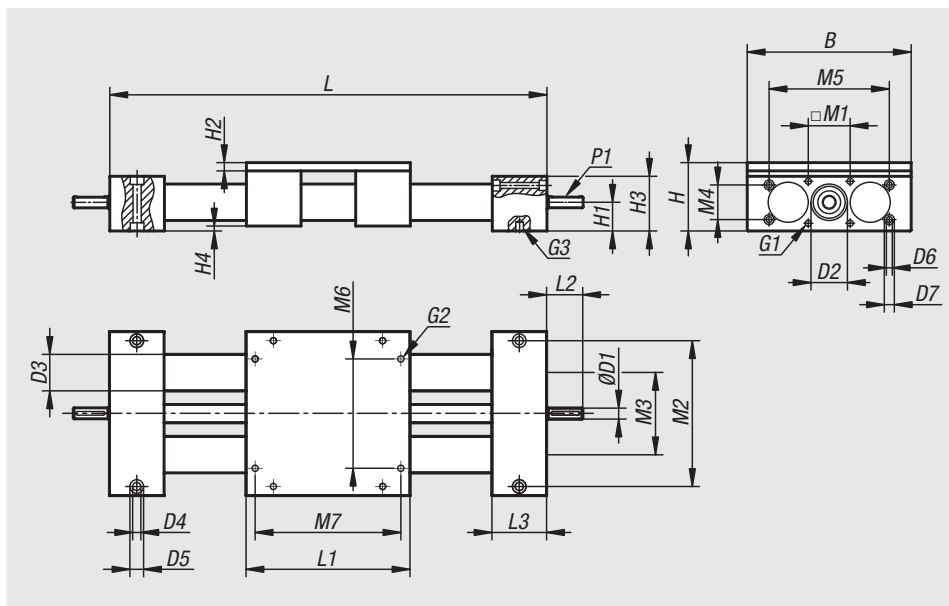
Temperature range 0° C to +60 °C

**On request:**

Other lengths.

**Technical data:**

Duty cycle: S3, 30% (at 60 min.)



Order No.	Version 1	Spindle	Travel S	B	D1	D2	D3	D4	D5	D6	D7	G1	G2	G3
21250-01-030X500	with plain bearing	Tr 14x3	270	130	8	30H8	30	7	11	-	-	M6	M6	M6
21250-01-030X800	with plain bearing	Tr 14x3	570	130	8	30H8	30	7	11	-	-	M6	M6	M6
21250-01-130X500	with ball bearing	Tr 14x3	270	130	8	30H8	30	7	11	-	-	M6	M6	M6
21250-01-130X800	with ball bearing	Tr 14x3	570	130	8	30H8	30	7	11	-	-	M6	M6	M6
21250-01-040X500	with plain bearing	Tr 20x4	200	180	12	40H8	40	9	15	6,5	11	M8	M8	M8
21250-01-040X800	with plain bearing	Tr 20x4	500	180	12	40H8	40	9	15	6,5	11	M8	M8	M8
21250-01-040X1000	with plain bearing	Tr 20x4	700	180	12	40H8	40	9	15	6,5	11	M8	M8	M8
21250-01-140X500	with ball bearing	Tr 20x4	200	180	12	40H8	40	9	15	6,5	11	M8	M8	M8
21250-01-140X800	with ball bearing	Tr 20x4	500	180	12	40H8	40	9	15	6,5	11	M8	M8	M8
21250-01-140X1000	with ball bearing	Tr 20x4	700	180	12	40H8	40	9	15	6,5	11	M8	M8	M8

Order No.	H	H1	H2	H3	H4	L	L1	L2	L3	M1	M2	M3	M4	M5	M6	M7	P1
21250-01-030X500	64	27	10	52	2	500	130	26	50	40x30	114,5	70	-	-	80	114	2x2x20
21250-01-030X800	64	27	10	52	2	800	130	26	50	40x30	114,5	70	-	-	80	114	2x2x20
21250-01-130X500	64	27	10	52	2	500	130	26	50	40x30	114,5	70	-	-	80	114	2x2x20
21250-01-130X800	64	27	10	52	2	800	130	26	50	40x30	114,5	70	-	-	80	114	2x2x20
21250-01-040X500	75	31,5	12	60	3	500	180	38	60	46	160	90	38	132	120	160	4x4x32
21250-01-040X800	75	31,5	12	60	3	800	180	38	60	46	160	90	38	132	120	160	4x4x32
21250-01-040X1000	75	31,5	12	60	3	1000	180	38	60	46	160	90	38	132	120	160	4x4x32
21250-01-140X500	75	31,5	12	60	3	500	180	38	60	46	160	90	38	132	120	160	4x4x32
21250-01-140X800	75	31,5	12	60	3	800	180	38	60	46	160	90	38	132	120	160	4x4x32
21250-01-140X1000	75	31,5	12	60	3	1000	180	38	60	46	160	90	38	132	120	160	4x4x32