

Mounting brackets



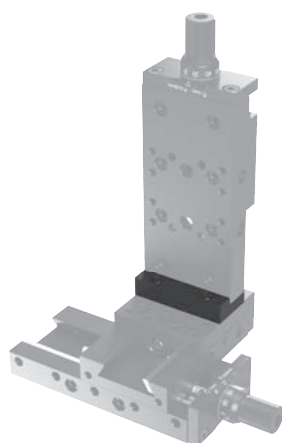
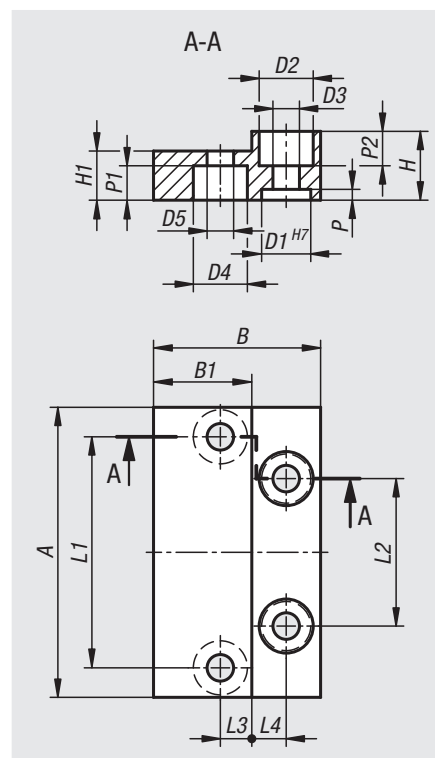
Material:
Aluminium EN AW-6082.

Version:
Black anodised

Sample order:
nlm 21010-01-020

Note:
With these mounting brackets, two slides can be connected in an X-Y configuration without any reduction in travel.

In connection with our centring rings 20240, the vertical slide can be centred to fit precisely on the horizontal slide and fastened with screws DIN 912 (07160).



Order No.	A	B	B1	D1	D2	D3	D4	D5	H	H1	L1	L2	L3	L4	P	P1	P2
21010-01-020	19,5	14	8	4	4,4	2,4	4,4	2,4	7	4	14,8	8	2,7	2,5	1,1	2,4	2,4
21010-01-030	29,5	17	10	5	5,5	2,7	5,5	2,7	7	5	23,5	15	3,2	3,5	1,1	3,5	3,5
21010-01-050	49,5	24	14	7	8	4,5	8	4,5	10	6	40	28	4,5	5	1,6	4,4	4,4
21010-01-080	79,5	37	23	10	9	5,5	9	5,5	12	8	68	40	6	6	2,1	5,5	5,5
21010-01-120	119,5	46	30	10	10	5,5	11	6,4	14	10	106	70	7	6	2,1	6,4	5,4