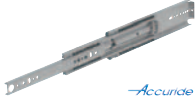
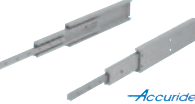


21335-30
Page 245



Telescopic slides, steel for side mounting, full extension, load capacity up to 272 kg **+**

21335-35
Page 246



Telescopic slides, aluminium for side mounting, full extension, load capacity up to 300 kg **+**

21335-80
Page 247



Mounting bracket, steel for telescopic slides **+**

21336
Page 249



Telescopic slides Double-T form

21338
Page 251



Telescopic slides double arrangement

21340
Page 252



Telescopic slides S-form

21342
Page 253




Carriages

21402
Page 256




Carriages with flange

21404
Page 257



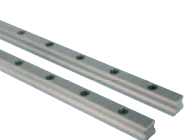
Carriages compact

21406
Page 258




Carriages compact, short

21410
Page 259



Profile guide rails

21420
Page 260



Miniature carriages stainless steel

21425
Page 261




Miniature profile guide rails stainless steel

21427
Page 262



Clamping elements for profile guide rails **+**

21427
Page 263



Adapter plates for clamping elements **+**

21427-01
Page 264



Clamping elements for miniature profile guide rails **+**

21495-01
Page 265



Linear plain bearings

21500
Page 266



Linear ball bearings with plastic cage

21505
Page 267



Linear ball bearings with steel cage

21505-01
Page 268



Linear ball bearings stainless steel

21510
Page 269



Linear ball bearings self-aligning **+**

21511
Page 270



Miniature linear ball bearing

21511-01
Page 271



Linear ball bearing, plastic, compact, self-aligning **+**

21511-02
Page 272



Linear ball bearing, steel, compact **+**

21515
Page 273



Linear ball bearings self-aligning, high load rating **+**

21518
Page 274



Linear ball bearings with round flange

21518-01
Page 275




Linear ball bearing with square flange **+**

21520
Page 276




Linear ball bearings with round flange, double bearing

21520-01
Page 277




Linear ball bearing with square flange, double bearing **+**

21522
Page 278



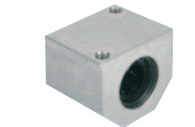
Linear housing units with flange **+**

21524
Page 279



Linear housing units with flange, tandem

21530
Page 280



Linear housing units single, closed **+**

21530-10
Page 281




Linear housing units, aluminium, compact, single, closed **+**

21535
Page 282



Linear housing units single, open **+**

21540
Page 284



Linear housing units tandem, closed **+**

+ New/Expanded Items



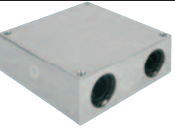
21540-10
Page 285

Linear housing units, aluminium, tandem, compact, closed +



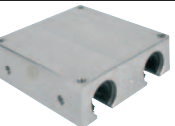
21545
Page 286

Linear housing units tandem, open +



21550
Page 287

Linear housing units quadro, closed +



21555
Page 288

Linear housing units quadro, open +



21560
Page 289

End seals double-lip sealing rings +



21565
Page 290

Shaft supports +



21575
Page 291

Traverses fixed +



21577
Page 292

Traverses moveable +



21580
Page 293

Shaft supports +



21580-10
Page 294

Shaft supports, aluminium, compact +



21582
Page 295

Shaft supports standard +



21585
Page 296

Shaft supports flanged +



Precision guide shafts with fastening holes



21595
Page 300

Precision guide shafts



21596
Page 301

Clamping elements for round guides +



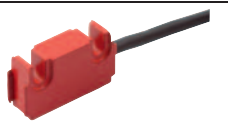
21700
Page 302

Position indicator quasi-absolute, mains-independent, indicator accuracy 10 µm, small design



21702
Page 303

Position indicator quasi-absolute, mains-independent, indicator accuracy 10 µm



21720
Page 304

Magnetic sensors passive sensors, miniature design



21725
Page 305

Magnetic tape scale with incremental coding, 5 mm pole length



21730
Page 306

Hollow shaft sensors with magnetic scanning



21740
Page 307

Reducer sleeves



21800
Page 308

Bullseye levels in frame, to screw on



21802
Page 309

Bullseye levels in plastic frame



21804
Page 309

Bullseye levels with bead-edged frame



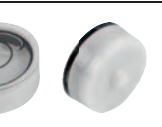
21806
Page 310

Bullseye levels in round frame



21808
Page 311

Bullseye level body



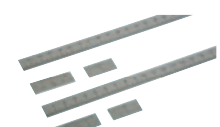
21810
Page 312

Bullseye level body plastic



21812
Page 312

Tubular bubble levels with frame to screw on



21880
Page 313

Linear scales self-adhesive, stainless steel



21882
Page 314

Linear scales self adhesive or with screw holes, aluminium



21884
Page 315

Linear scales self-adhesive or with screw holes, aluminium



21886
Page 316

Scale tape, steel self-adhesive



21901
Page 317

Position indicators



21902
Page 318

Position indicators



21904
Page 319

Position indicators



21922
Page 320

Position indicators freely programmable

+ New/Expanded Items

21923
Page 321



Position indicators
freely programmable

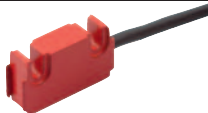
21924
Page 323



Position indicator, plastic, electronic
IO link interface



21924-01
Page 324



Magnetic sensors, passive sensors,
miniature design
IO link interface



21940
Page 327



Reducing bushings

21942
Page 327



Intermediate plates

21944
Page 328



Mounting brackets

21952
Page 329



Adjusting knobs with position indicator
digital display

21962
Page 330



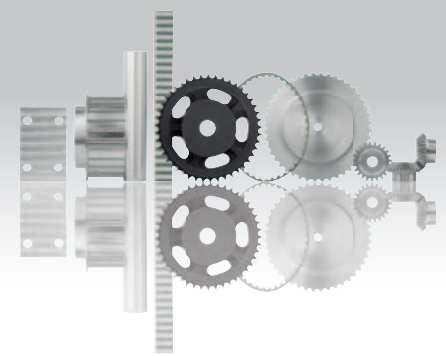
Position indicators for handwheels
analogue-digital display

21972
Page 331



Handwheels for position indicators

Drive technology



22002
Page 338



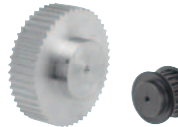
Toothed belt pulleys
T profile

22003
Page 340



Toothed belt pulleys
AT profile

22004
Page 342



Toothed pulleys
profile HTD 5M

22004
Page 343



Toothed pulleys
profile HTD 8M

22005
Page 346



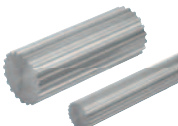
Toothed pulleys
profile HTD 5M, for assembly with taper
clamping bushes

22005
Page 348



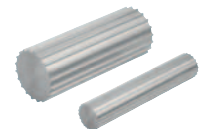
Toothed pulleys
profile HTD 8M, for assembly with taper
clamping bushes

22007
Page 350



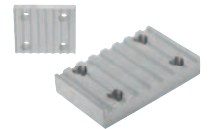
Splined shafts
T profile

22008
Page 351



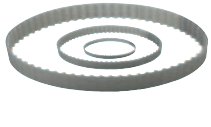
Splined shafts
AT profile

22012
Page 352



Clamp plates for toothed belts
profile T and AT

22052
Page 353



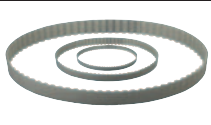
Toothed belts
T profile

22054
Page 356



Toothed belts by the meter
T profile

22057
Page 358



Toothed belts
AT profile

22059
Page 360



Toothed belts by the meter
AT profile

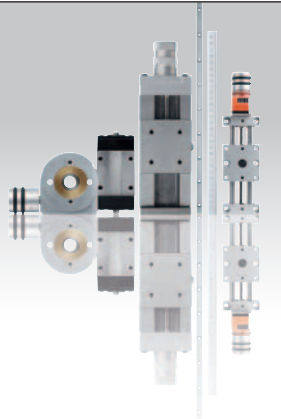
22062
Page 362



Toothed belt
profile HTD 5M

New/Expanded Items

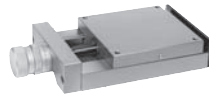
Slides
Guide rails
Positioning stages
Linear guide systems
Position indicators



21000
Page 93



21032
Page 101



Dovetail slides
with micrometer spindle

21000
Page 94



Dovetail slides
with micrometer spindle

21033
Page 102



Straps

21000
Page 95



Dovetail slides
with micrometer spindle and handwheel

21034
Page 103



Fastening screws
for cross table mounting

21010
Page 97



Precision slides
roller mounted

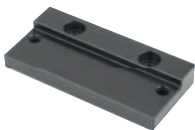
21035
Page 104



Dovetail slides
with micrometer spindle
and location holes



21010-01
Page 97



Slides mini
roller mounted

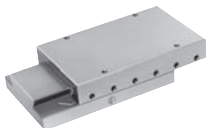
21038
Page 105



Mounting brackets



21030
Page 99



Precision slides
roller mounted with end plates

21040
Page 106



Dovetail slides

21031
Page 100



Precision slides
roller mounted with micrometer spindle

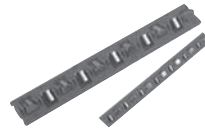
21050
Page 107



Dovetail slides
with end plates

Guide rails
for cross rollers

21052
Page 108



Roller cages
for guide rails

21054
Page 111



Guide rails
Teflon-coated

21060
Page 113



Dovetail slides
with location holes

21061
Page 115



Dovetail slides
with end plates and location holes

21062
Page 117



Dovetail slides
with micrometer spindle and location
holes

21064
Page 119



Precision slides
roller mounted with location holes

21068
Page 121



Precision slides
roller mounted with end plates and
location holes

21070
Page 123



Precision slides
roller mounted with micrometer
spindle and location holes

21080
Page 124



Positioning stages short
with coaxial electric drive

21081
Page 126



Positioning stages short
with lateral electric drive

21082
Page 128



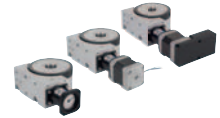
Positioning stages long
with coaxial electric drive

21083
Page 130



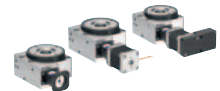
Positioning stages long
with lateral electric drive

21085
Page 132



Positioning stages rotary
with coaxial electric drive

21085-01
Page 136



Rotary stages
with coaxial electric drive,
high load

21090
Page 138



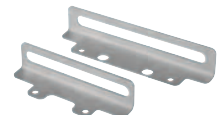
Mounting plates horizontal

21091
Page 140



Mounting plates vertical

21093
Page 142



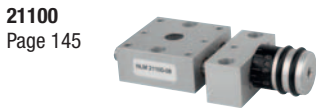
Sensor holder

21094
Page 143

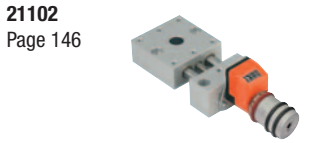


Sensor holder

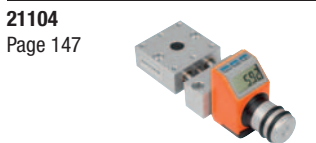
+ New/Expanded Items



Positioning stages, short



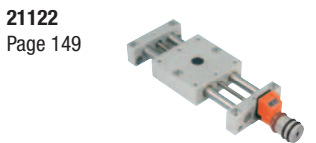
Positioning stages, short with position indicator



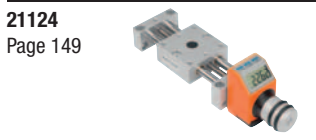
Positioning stages, short with electronic position indicator



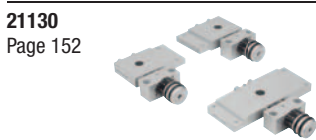
Positioning stages, long



Positioning stages, long with position indicator



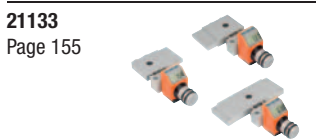
Positioning stages, long with electronic position indicator



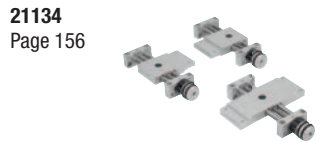
Cross stages, short



Cross stages, short with position indicators



Cross slides, short with electronic position indicator



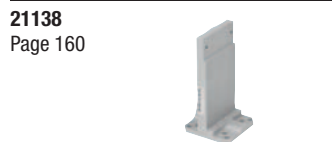
Cross stages, long



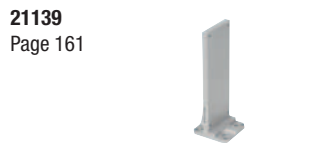
Cross stages, long with position indicators



Cross slides, long with electronic position indicator



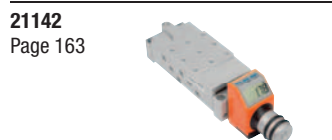
Vertical bracket short



Vertical bracket long



Vertical stages



Vertical stages with electronic position indicator



Rotary discs



Rotary positioning stages



Rotary positioning stages with position indicators



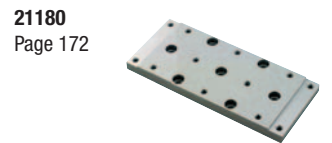
Rotary stages with electronic position indicator



Swivel angles



Pivot heads swivel angle 30°



Base plates



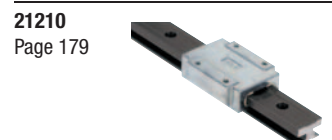
Angle plates



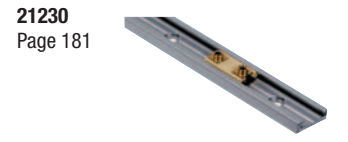
Carriages DryLin® T



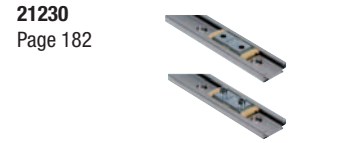
Guide rails DryLin® T



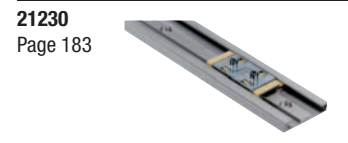
Miniature linear guides DryLin® T



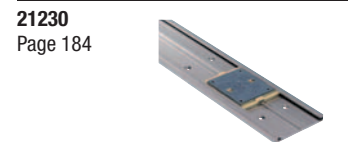
Miniature slide guides DryLin® N



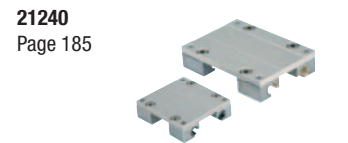
Miniature slide guides DryLin® N



Miniature slide guides DryLin® N



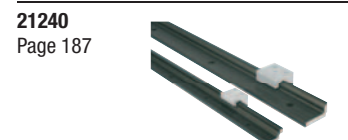
Flat guides DryLin® N



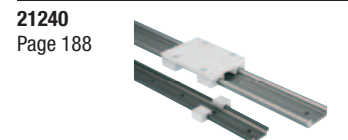
Carriages DryLin® W



Slide carriages DryLin® W



Guide rails DryLin® W single



Guide rails DryLin® W double

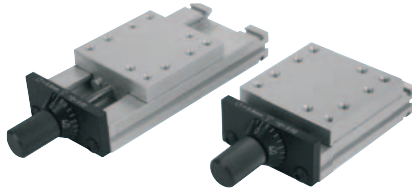


Plain bearings for rotary stages

+ New/Expanded Items

Dovetail slides

with micrometer spindle



Material:

Aluminium EN AW-6063

Sample order:

nIm 21000-050105

Note:

These precision dovetail slides find use in machine and fixture construction, metrology, optical instruments and fine mechanics. The stated permissible load rating (F) is for static loads.

The torque values only apply for centred carriages.

M1 = counterbore for screw.

TI = number of fastening holes E1/E2/M1 inside.

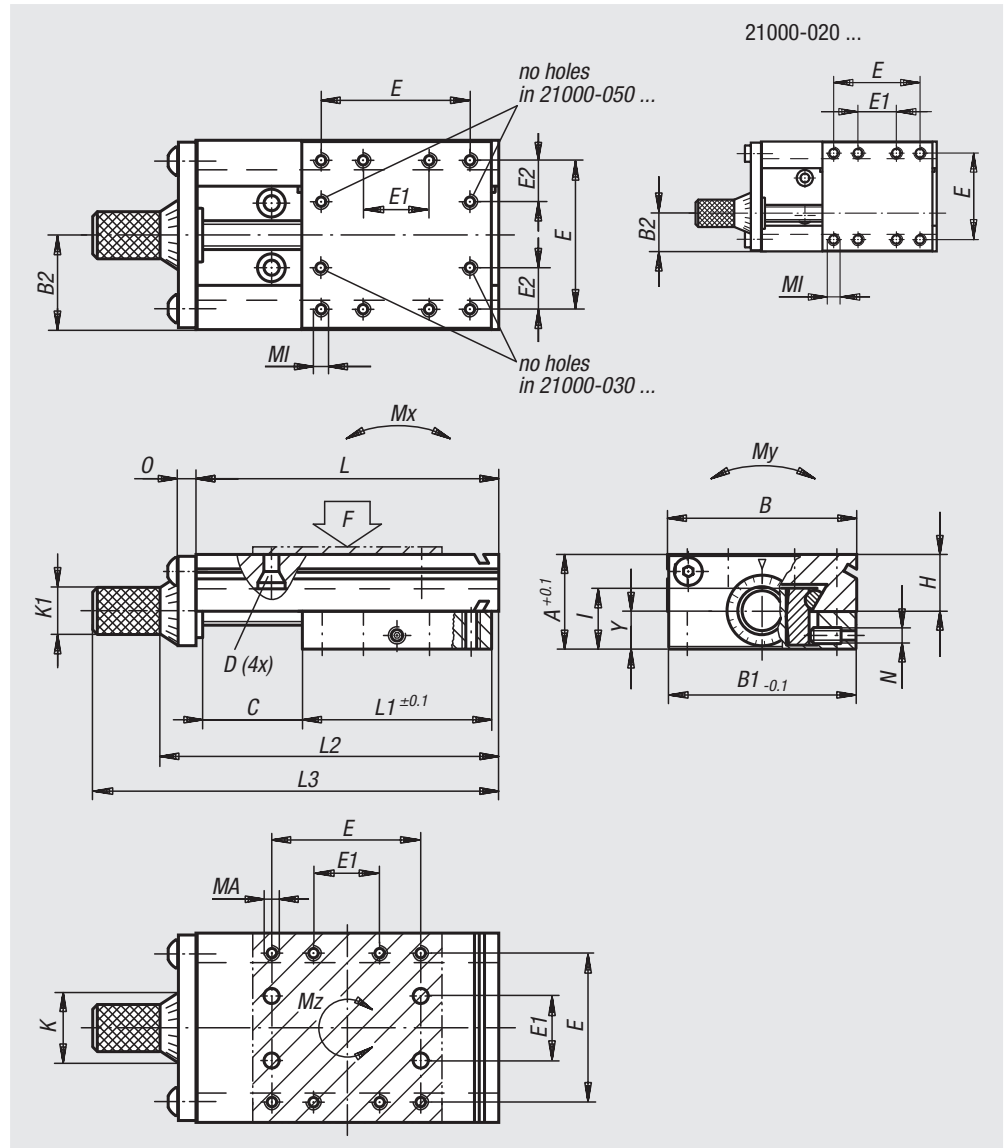
TA = number of fastening holes E/E1/MA outside.

Advantages:

- Innovative and safe clamping system without height or lateral displacement.
- No play in guides.
- Rapid subsequent combination in X, Y and Z axes.

Applications:

- Adjustment of machining units, metrology cameras, mirrors, microscopes and laser heads (including the machining of surgical needles).
- Fine adjustment of brazing, plasma and welding heads.
- Focussing of flame nozzles.



21000-020 ...

no holes
in 21000-050 ...

no holes
in 21000-030 ...

My

B

B1 -0.1

H

N

My

B

B1 -0.1

H

N

My

B

B1 -0.1

H

N

My

B

B1 -0.1

H

N

My

B

B1 -0.1

H

N

My

B

B1 -0.1

H

N

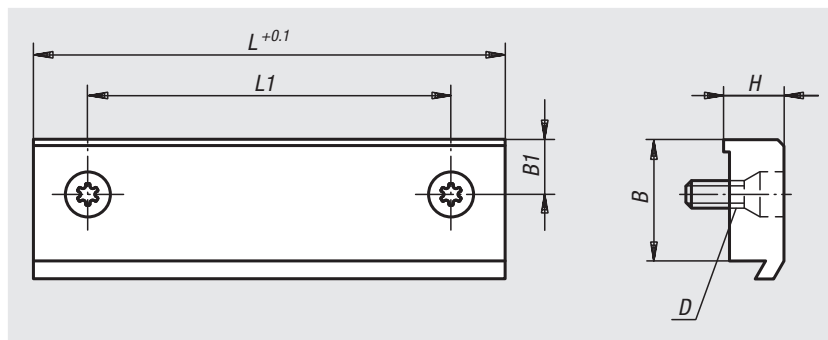
Dovetail slides

with micrometer spindle

Order No.	A	B	B1	B2	D for screw	E	E1	E2	TI	TA	H	I	K	K1	Travel S
21000-020030	13	20 -0,3	19,5	8,1	M2	12	6	-	8	8	8	8,3	10	6,3	5
21000-020035	13	20 -0,3	19,5	8,1	M2	12	6	-	8	8	8	8,3	10	6,3	10
21000-020045	13	20 -0,3	19,5	8,1	M2	12	6	-	8	8	8	8,3	10	6,3	20
21000-030040	15	30 -0,3	29,5	13	M3	23	8	7,5	10	8	9,8	9,8	10	6,3	5
21000-030045	15	30 -0,3	29,5	13	M3	23	8	7,5	10	8	9,8	9,8	10	6,3	10
21000-030055	15	30 -0,3	29,5	13	M3	23	8	7,5	10	8	9,8	9,8	10	6,3	20
21000-050067	23	50 -0,3	49,5	25	M4	38	16	11	10	8	14,5	15,6	22	14,3	12
21000-050080	23	50 -0,3	49,5	25	M4	38	16	11	10	8	14,5	15,6	22	14,3	25
21000-050105	23	50 -0,3	49,5	25	M4	38	16	11	10	8	14,5	15,6	22	14,3	50
21000-080110	34	80 -0,5	79,5	40	M5	60	34	13	12	8	23	22,5	26	14,3	25
21000-080135	34	80 -0,5	79,5	40	M5	60	34	13	12	8	23	22,5	26	14,3	50
21000-080160	34	80 -0,5	79,5	40	M5	60	34	13	12	8	23	22,5	26	14,3	75
21000-080185	34	80 -0,5	79,5	40	M5	60	34	13	12	8	23	22,5	26	14,3	100
21000-120150	45	120 -0,5	119	60	M5	90	40	25	12	8	30	29	26	14,3	25
21000-120175	45	120 -0,5	119	60	M5	90	40	25	12	8	30	29	26	14,3	50
21000-120200	45	120 -0,5	119	60	M5	90	40	25	12	8	30	29	26	14,3	75
21000-120225	45	120 -0,5	119	60	M5	90	40	25	12	8	30	29	26	14,3	100

Order No.	L	L1	L2	L3	MI	MA	N	O	Y	Spindle	F N	Mx Nm	My Nm	Mz Nm
21000-020030	30	20	38,2	48,2	M2x3	M2x3	M3	3	5,2	M5x0,5	180	0,45	2	0,3
21000-020035	35	20	43,2	53,2	M2x3	M2x3	M3	3	5,2	M5x0,5	180	0,45	2	0,3
21000-020045	45	20	53,2	63,2	M2x3	M2x3	M3	3	5,2	M5x0,5	180	0,45	2	0,3
21000-030040	40	30	48,2	58,2	M3x4,5	M3x4,5	M4	3	5,8	M5x0,5	350	1,1	4	1
21000-030045	45	30	53,2	63,2	M3x4,5	M3x4,5	M4	3	5,8	M5x0,5	350	1,1	4	1
21000-030055	55	30	63,2	73,2	M3x4,5	M3x4,5	M4	3	5,8	M5x0,5	350	1,1	4	1
21000-050067	67	50	78,2	98,2	M4x6	M4x8	M4	5	11,5	M5x0,5	540	2,5	8	2,3
21000-050080	80	50	91,2	111,2	M4x6	M4x8	M4	5	11,5	M5x0,5	540	2,5	8	2,3
21000-050105	105	50	116,2	136,2	M4x6	M4x8	M4	5	11,5	M5x0,5	540	2,5	8	2,3
21000-080110	110	80	128,3	148,3	M5x7,5	M5x10	M6	8	14	M10x1	750	8	22	7
21000-080135	135	80	153,3	173,3	M5x7,5	M5x10	M6	8	14	M10x1	750	8	22	7
21000-080160	160	80	178,3	198,3	M5x7,5	M5x10	M6	8	14	M10x1	750	8	22	7
21000-080185	185	80	203,3	223,3	M5x7,5	M5x10	M6	8	14	M10x1	750	8	22	7
21000-120150	150	120	172,3	192,3	M5x10	M5x10	M6	12	18,5	M10x1	1500	30	45	18
21000-120175	175	120	197,3	217,3	M5x10	M5x10	M6	12	18,5	M10x1	1500	30	45	18
21000-120200	200	120	222,3	242,3	M5x10	M5x10	M6	12	18,5	M10x1	1500	30	45	18
21000-120225	225	120	247,3	267,3	M5x10	M5x10	M6	12	18,5	M10x1	1500	30	45	18

Straps


Material:

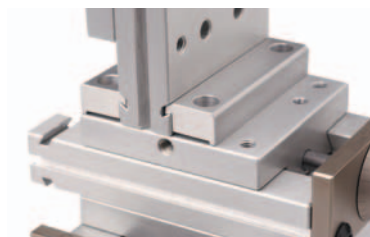
Aluminium EN AW-6063

Sample order:

nIm 21000-020 (1 strap with clamping screw)

Note:

The straps are used to clamp the dovetail slides in the X, Y and Z axes and to fix the slide unit in the machine. End mounting will reduce the travel.



Order No.	B	B1	D for screw	H	L	L1	travel reduction	suitable for slide
21000-020	5,7	3,7	M2	3,5	19,5	12	3,5	21000-020 ...
21000-030	5,7	2,85	M3	3,5	29,5	23	3,5	21000-030 ...
21000-050	11,5	5,25	M4	8	49,3	38	8	21000-050 ...
21000-080	11,5	6	M5	8	78,9	60	8	21000-080 ...
21000-120	15	10	M5	11	118,4	90	10	21000-120 ...

Fastening screws

for cross table mounting



Material:

Steel.

Version:

tempered.

Sample order:

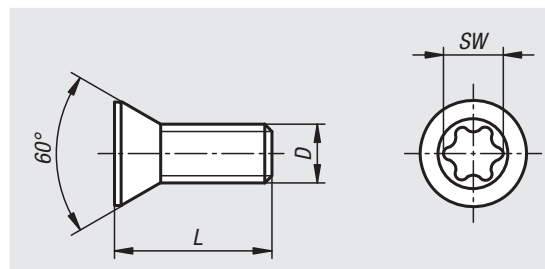
nIm 21000-02055

(Supplied in sets of four)

Note:

Mounting set for constructing a cross table.

Four fastening screws per set.



Order No.	D	L	SW	suitable for slide
21000-02055	M2	5	Torx T7	21000-020 ...
21000-03070	M3	9	Torx T9	21000-030 ...
21000-04100	M4	10	Torx T15	21000-050 ...
21000-05140	M5	17	Torx T20	21000-080 ... / 21000-120 ...

21245-01
Page 190




Plain bearing for rotary stages

21245-01
Page 191



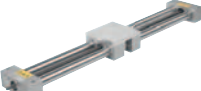
Clamping element for rotary stage plain bearing

21250
Page 193




Double tube linear actuator

21250-01
Page 194



Double tube linear actuator with mounting bracket

21320
Page 195



Roller carriages compact and heavy-duty version

21320
Page 196



Roller guide rails

21322
Page 197




Roller carriages steel

21322
Page 198



Roller guide carriage steel

21322
Page 199



Roller guide rails

21330
Page 201



Linear ball bearing with internal race

21334
Page 202



Telescopic slides, steel for side mounting full extension, load capacity up to 20 kg

21334-05
Page 204



Telescopic slides, steel for surface mounting, partial extension both sides, load capacity up to 35 kg

21334-10
Page 206



Telescopic slides, steel for side mounting, full extension, load capacity up to 45 kg

21334-15
Page 210



Telescopic slides, steel for side mounting, full extension, load capacity up to 50 kg

21334-20
Page 215



Telescopic slides, steel for side mounting, partial extension, load capacity up to 50 kg

21334-25
Page 217



Telescopic slides, steel for side mounting, partial extension both sides, load capacity up to 50 kg

21334-30
Page 219



Telescopic slides, steel for side mounting, partial extension, load capacity up to 50 kg

21334-35
Page 220



Telescopic slides, steel for side mounting, over-extension, load capacity up to 55 kg

21334-40
Page 221



Telescopic slides, steel for side mounting, over-extension, load capacity up to 60 kg

21334-45
Page 222



Telescopic slides, steel for side mounting, partial extension, load capacity up to 65 kg

21334-50
Page 223



Telescopic slides, stainless steel for side mounting, partial extension, load capacity up to 65 kg

21334-55
Page 224



Telescopic slides, steel for side mounting, over-extension, load capacity up to 68 kg

21334-60
Page 225



Telescopic slides, steel for side mounting, over-extension, load capacity up to 68 kg

21334-65
Page 226



Telescopic slides, steel for side mounting, over-extension, load capacity up to 68 kg

21334-70
Page 227



Telescopic slides, steel for side mounting, over-extension, load capacity up to 70 kg

21334-75
Page 228



Telescopic slides, steel for side mounting, over-extension, load capacity up to 70 kg

21334-80
Page 229



Telescopic slides, stainless steel for side mounting, over-extension, load capacity up to 70 kg

21334-85
Page 230



Telescopic slides, stainless steel for side mounting, full extension, load capacity up to 80 kg

21334-90
Page 231



Telescopic slides, steel for side mounting, over-extension, load capacity up to 82 kg

21334-95
Page 232



Telescopic slides, stainless steel for side mounting, over-extension, load capacity up to 90 kg

21335
Page 233



Telescopic slides, steel for side mounting, full extension, load capacity up to 100 kg

21335-05
Page 234



Telescopic slides, steel for side mounting, over-extension, load capacity up to 100 kg

21335-10
Page 235



Telescopic slides, steel for side mounting, full extension, load capacity up to 124 kg

21335-15
Page 237



Telescopic slides, steel for side mounting, full extension, load capacity up to 160 kg

21335-20
Page 238



Telescopic slides, steel for side mounting, over-extension, load capacity up to 160 kg

21335-25
Page 241



Telescopic slides, steel for side mounting, full extension, load capacity up to 227 kg

+ New/Expanded Items