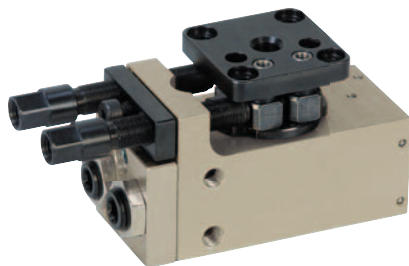


# Rotary module pneumatic



**Material:**

Housing high-strength aluminium.  
Stop system steel.

**Version:**

Housing anodised.  
Stop system hardened and black oxidised.

**Sample order:**

nIm 20060-014

**Note:**

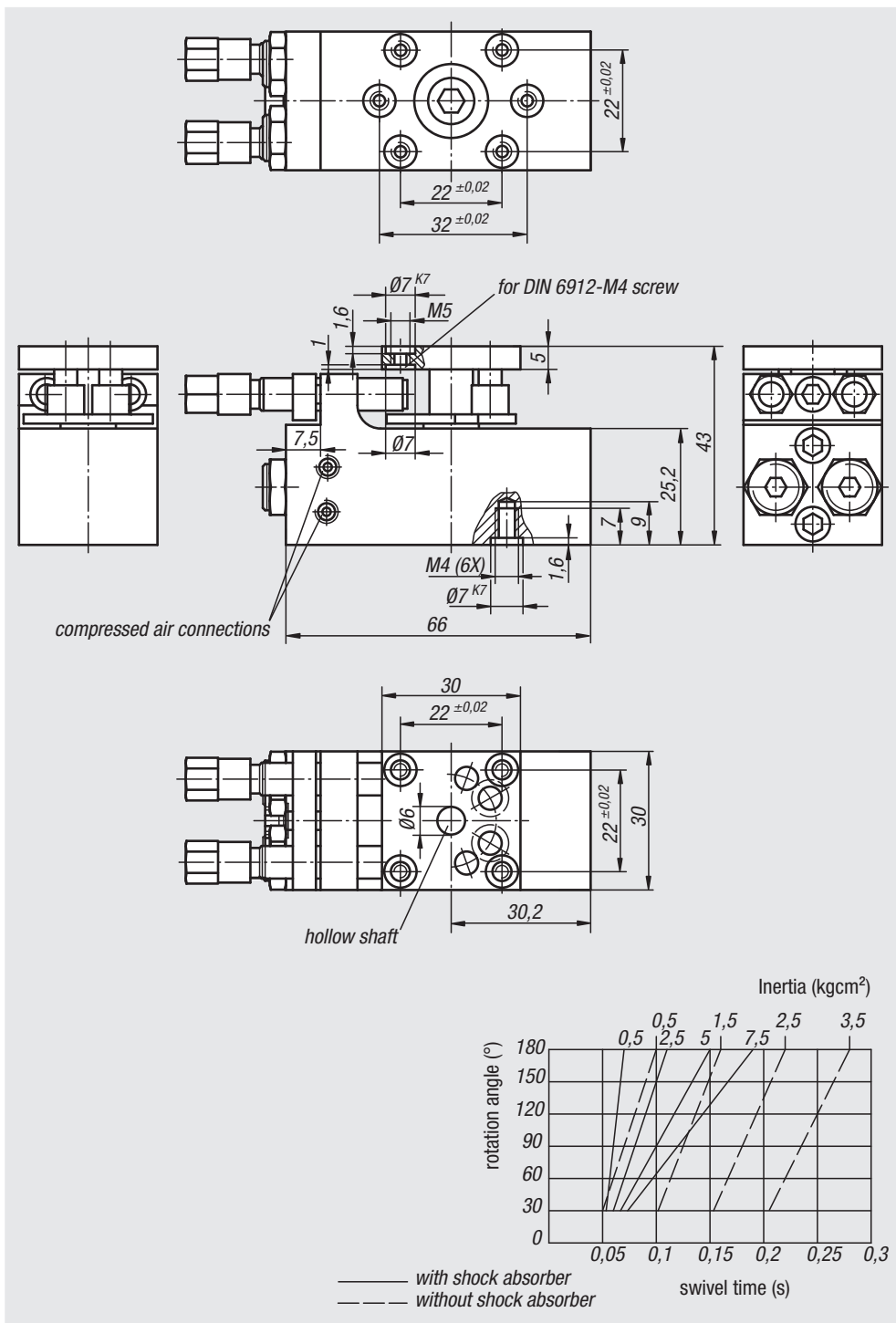
Maintenance-free pneumatic rotary module for small installation spaces with double actuated drive cylinder. Control by 4/2 or 5/2 directional valve. Pneumatic drive, 4-8 bar, constant, filtered (10 µm), dried, oiled or unoled. Compressed air connection M5. Modules of the same size can be combined with one another without adapter plates via the precise centring system by means of centring rings 20240.

The 0° – 190° rotation angle is infinitely adjustable.

Repeat accuracy ±0.01°.

**Accessories:**

See table for shock absorber, proximity switch and plug connector.



Order No.	Size	Driving torque Nm	Rotation angle	Axial load N	Radial load N	Cylinder Ø	Air consumption per cycle at 6 bar (ccm)
20060-014	4	0,28	0° - 190°	300	220	2 x 10	5

Order No.	Size	Suitable shock absorber	Suitable proximity switch	Suitable plug connector
20060-014	4	26300-1010008	83000-15-010	80100-10-010X2000

20000 21000 22000 23000 24000 26000 27000 28000 29000 31000 32000 33000

