

## Roller elements



**Material:**

Housing glass-bead reinforced polyamide.  
 Rollers POM.  
 Screws steel.

**Version:**

Housing and rollers black.  
 Screws electro zinc-plated.

**Sample order:**

nIm 10450-1000

**Note:**

The roller elements are ideal for constructing roller conveyors in any length and width. Suitable for aluminium profiles types B and I. The sprung guide tabs underneath universally match slots sized 8 and 10.

**Mounting Form A**

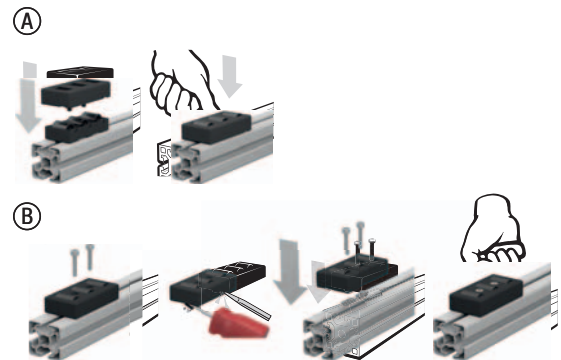
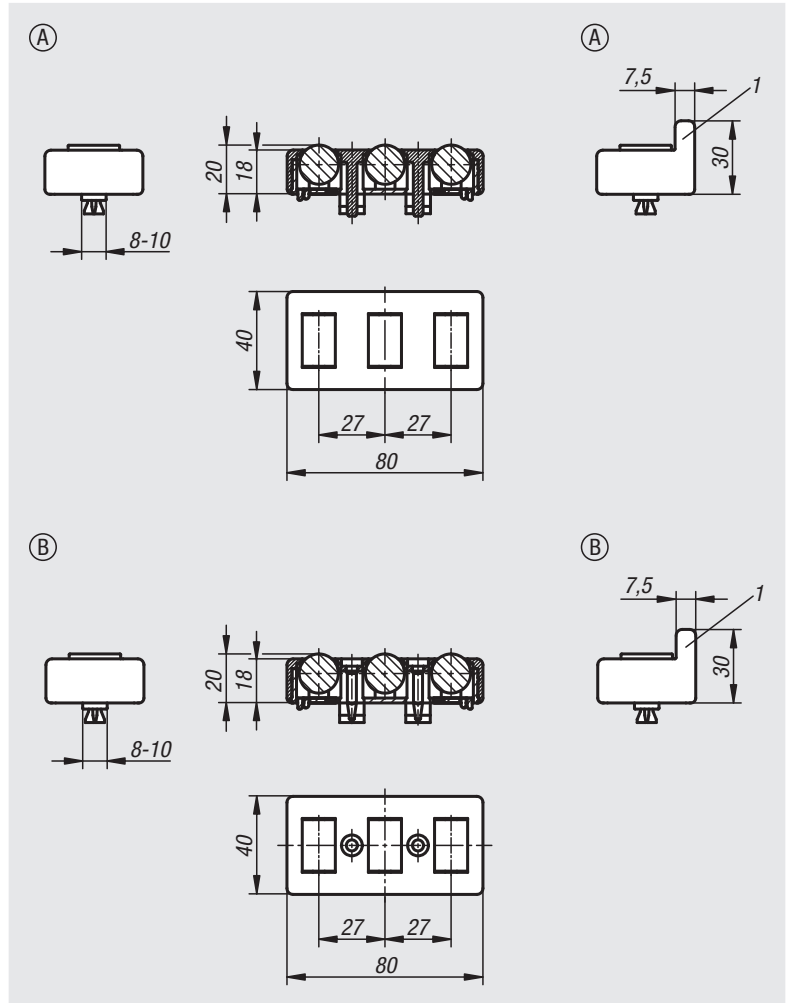
Insert the lower housing part with rollers into the aluminium profile slot. Set the spread pins on the upper housing part into the lower housing part and press down. The spread pins expand the clamps and locks the roller element in the slot.

**Mounting Form B**

Insert the lower housing part with rollers into the aluminium profile slot. Set the upper housing part on top and press down. Knocking or screwing the screws in locks and clamps the roller element in the slot. Alternatively, the clamps under the lower housing part can be broken off and the roller element can be securely screwed to the aluminium profile using screws and slot keys.

**Drawing reference:**

1) lateral guide



Order No.	Form	Version 1	Slot width	Load capacity N
10450-1000	A	without lateral guide	8/10	100
10450-1100	A	with lateral guide	8/10	100
10450-2000	B	without lateral guide	8/10	100
10450-2100	B	with lateral guide	8/10	100