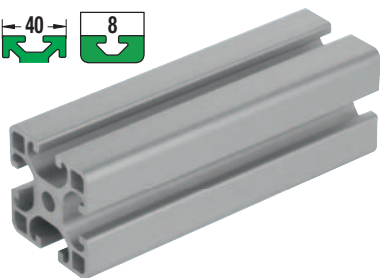


Aluminium profiles 40x40 light

Type I

**Material:**

Aluminium EN AW-6063 T66 (AlMgSi 0.5 F25)

Version:

Artificially aged, natural colour anodised.

Sample order:

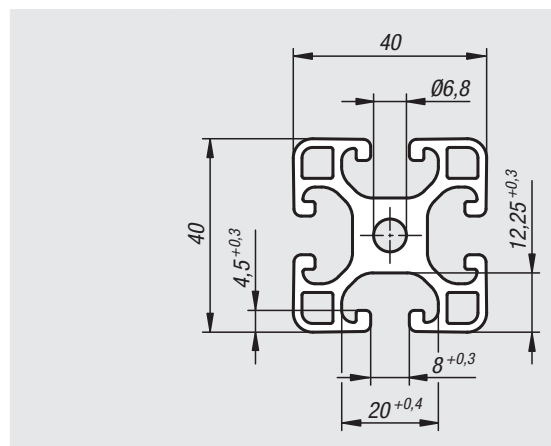
nlm 10045-084040X*

* Include length only in full mm increments.

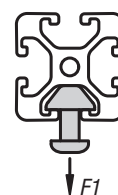
Maximum available length 6000 mm.

Note:

Lightweight aluminium profile for weight-optimised constructions.

**On request:**

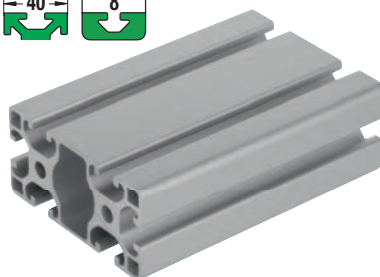
Mitre cuts 15°, 30° and 45°.



Order No.	Slot width	Profile	Ix cm ⁴	Iy cm ⁴	Wx cm ³	Wy cm ³	Profile area cm ²	F1 max. kN	Approx. weight kg/m
10045-084040X****	8	40x40	9,1	9,1	4,55	4,55	6,47	2,5	1,75

Aluminium profiles 40x80 light

Type I

**Material:**

Aluminium EN AW-6063 T66 (AlMgSi 0.5 F25)

Version:

Artificially aged, natural colour anodised.

Sample order:

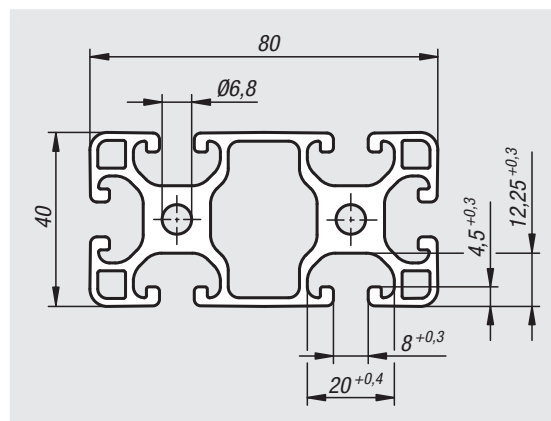
nlm 10045-084080X*

* Include length only in full mm increments.

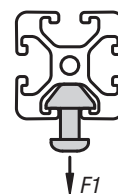
Maximum available length 6000 mm.

Note:

Lightweight aluminium profile for weight-optimised constructions.

**On request:**

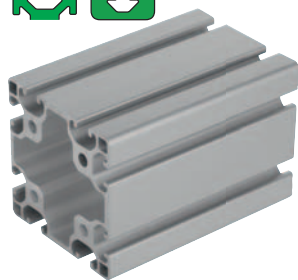
Mitre cuts 15°, 30° and 45°.



Order No.	Slot width	Profile	Ix cm ⁴	Iy cm ⁴	Wx cm ³	Wy cm ³	Profile area cm ²	F1 max. kN	Approx. weight kg/m
10045-084080X****	8	40x80	16,77	70,2	8,45	17,56	11,3	2,5	3,08

Aluminium profiles 80x80 light

Type I



Material:

Aluminium EN AW-6063 T66 (AlMgSi 0.5 F25)

Version:

Artificially aged, natural colour anodised.

Sample order:

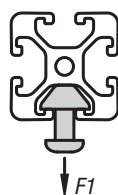
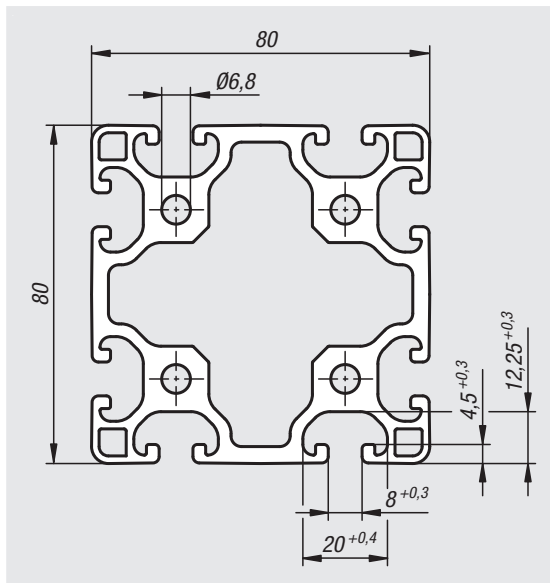
nIm 10045-088080X*

* Include length only in full mm increments.

Maximum available length 6000 mm.

Note:

Lightweight aluminium profile for weight-optimised constructions.



On request:

Mitre cuts 15°, 30° and 45°.

Order No.	Slot width	Profile	Ix cm ⁴	Iy cm ⁴	Wx cm ³	Wy cm ³	Profile area cm ²	F1 max. kN	Approx. weight kg/m
10045-088080X****	8	80x80	130,1	130,1	33,2	33,2	19,3	2,5	2,17

Notes

