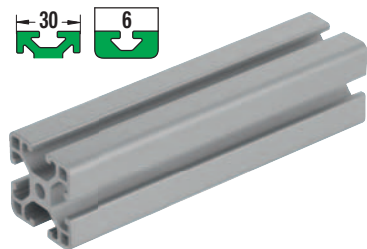


## Aluminium profiles 30x30 light

Type I

**Material:**

Aluminium EN AW-6063 T66 (AlMgSi 0.5 F25)

**Version:**

Artificially aged, natural colour anodised.

**Sample order:**

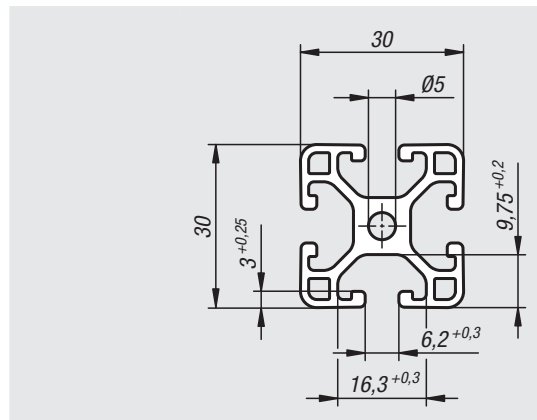
nlm 10025-063030X\*

\* Include length only in full mm increments.

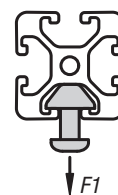
Maximum available length 6000 mm.

**Note:**

Lightweight aluminium profile for weight-optimised constructions.

**On request:**

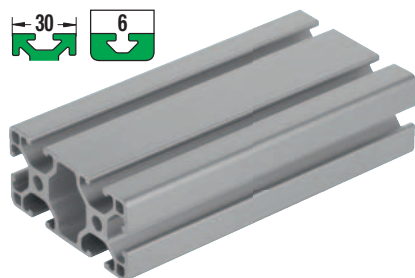
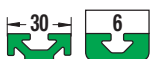
Mitre cuts 15°, 30° and 45°.



Order No.	Slot width	Profile	I <sub>x</sub> cm <sup>4</sup>	I <sub>y</sub> cm <sup>4</sup>	W <sub>x</sub> cm <sup>3</sup>	W <sub>y</sub> cm <sup>3</sup>	Profile area cm <sup>2</sup>	F1 max. kN	Approx. weight kg/m
10025-063030X****	6	30x30	2,9	2,9	1,94	1,94	3,43	0,5	0,93

## Aluminium profiles 30x60 light

Type I

**Material:**

Aluminium EN AW-6063 T66 (AlMgSi 0.5 F25)

**Version:**

Artificially aged, natural colour anodised.

**Sample order:**

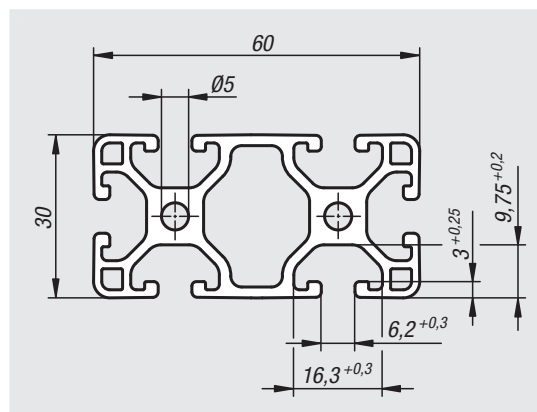
nlm 10025-063060X\*

\* Include length only in full mm increments.

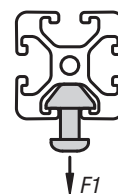
Maximum available length 6000 mm.

**Note:**

Lightweight aluminium profile for weight-optimised constructions.

**On request:**

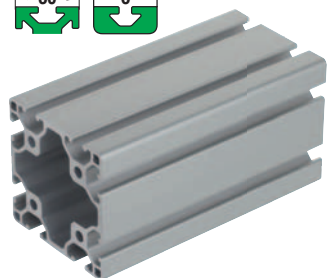
Mitre cuts 15°, 30° and 45°.



Order No.	Slot width	Profile	I <sub>x</sub> cm <sup>4</sup>	I <sub>y</sub> cm <sup>4</sup>	W <sub>x</sub> cm <sup>3</sup>	W <sub>y</sub> cm <sup>3</sup>	Profile area cm <sup>2</sup>	F1 max. kN	Approx. weight kg/m
10025-063060X****	6	30x60	5,54	21,22	3,69	7,07	6,13	0,5	1,65

# Aluminium profiles 60x60 light

Type I



**Material:**

Aluminium EN AW-6063 T66 (AlMgSi 0.5 F25)

**Version:**

Artificially aged, natural colour anodised.

**Sample order:**

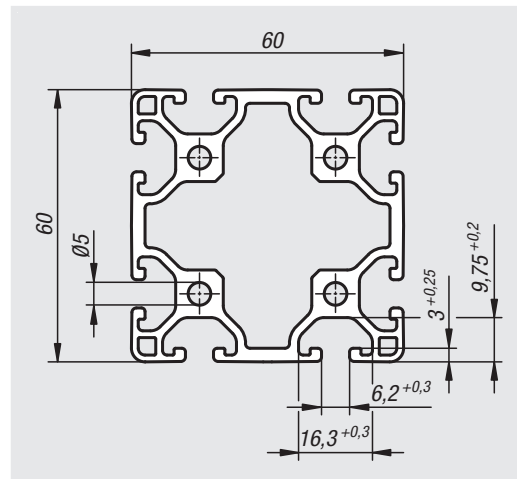
nIm 10025-066060X\*

\* Include length only in full mm increments.

Maximum available length 6000 mm.

**Note:**

Lightweight aluminium profile for weight-optimised constructions.



**On request:**

Mitre cuts 15°, 30° and 45°.



Order No.	Slot width	Profile	Ix cm <sup>4</sup>	Iy cm <sup>4</sup>	Wx cm <sup>3</sup>	Wy cm <sup>3</sup>	Profile area cm <sup>2</sup>	F1 max. kN	Approx. weight kg/m
10025-066060X****	6	60x60	39,47	39,47	13,16	13,16	10,01	0,5	2,70

## Notes

