

Magnets shallow pot with internal thread

NdFeB

**Material:**

Housing, steel.
Magnetic core NdFeB.

Version:

Housing, electro zinc-plated.

Sample order:

nlm 09072-01

Note:

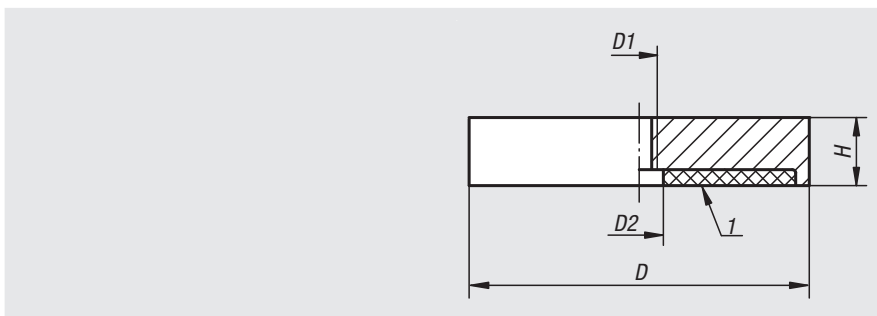
Shielded system

Temperature range:

max. 80°C.

Drawing reference:

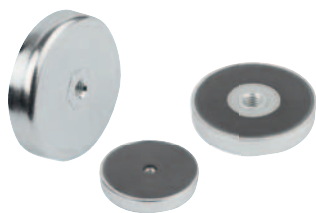
1) magnetic face



Order No.	D	D1	D2	H	Magnetic force N
09072-01	32	M5	5,5	7	330
09072-02	40	M5	10,5	8	550
09072-03	63	M10	11,7	14	1100
09072-04	75	M10	13	15	1750

Magnets shallow pot with internal thread

hard ferrite

**Material:**

Housing, steel.
Magnetic core hard ferrite.

Version:

Housing, electro zinc-plated.

Sample order:

nlm 09072-10-2504

Note:

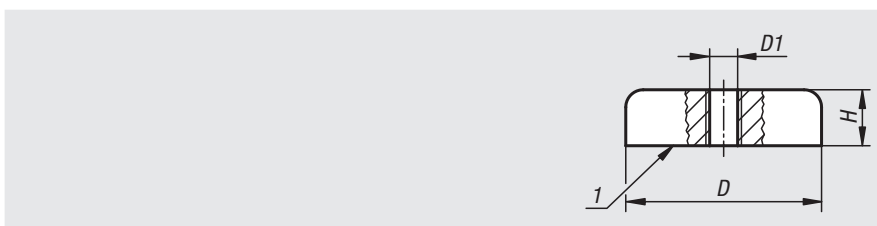
Shielded system.

Temperature range:

max. 200°C.

Drawing reference:

1) magnetic face



Order No.	D	D1	H	Magnetic force N
09072-10-2504	25 ±0,15	M4	7	36
09072-10-3204	32 ±0,2	M4	7	75
09072-10-4004	40 ±0,2	M4	8	90
09072-10-5006	50 ±0,2	M6	10	170
09072-10-5008	50 ±0,2	M8	10	170
09072-10-6308	63 ±0,20	M8	14	290
09072-10-8008	80 ±0,25	M8	18	550
09072-10-8010	80 ±0,25	M10	18	550