

Permanent workholding magnets

with fine pole division



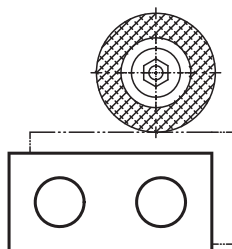
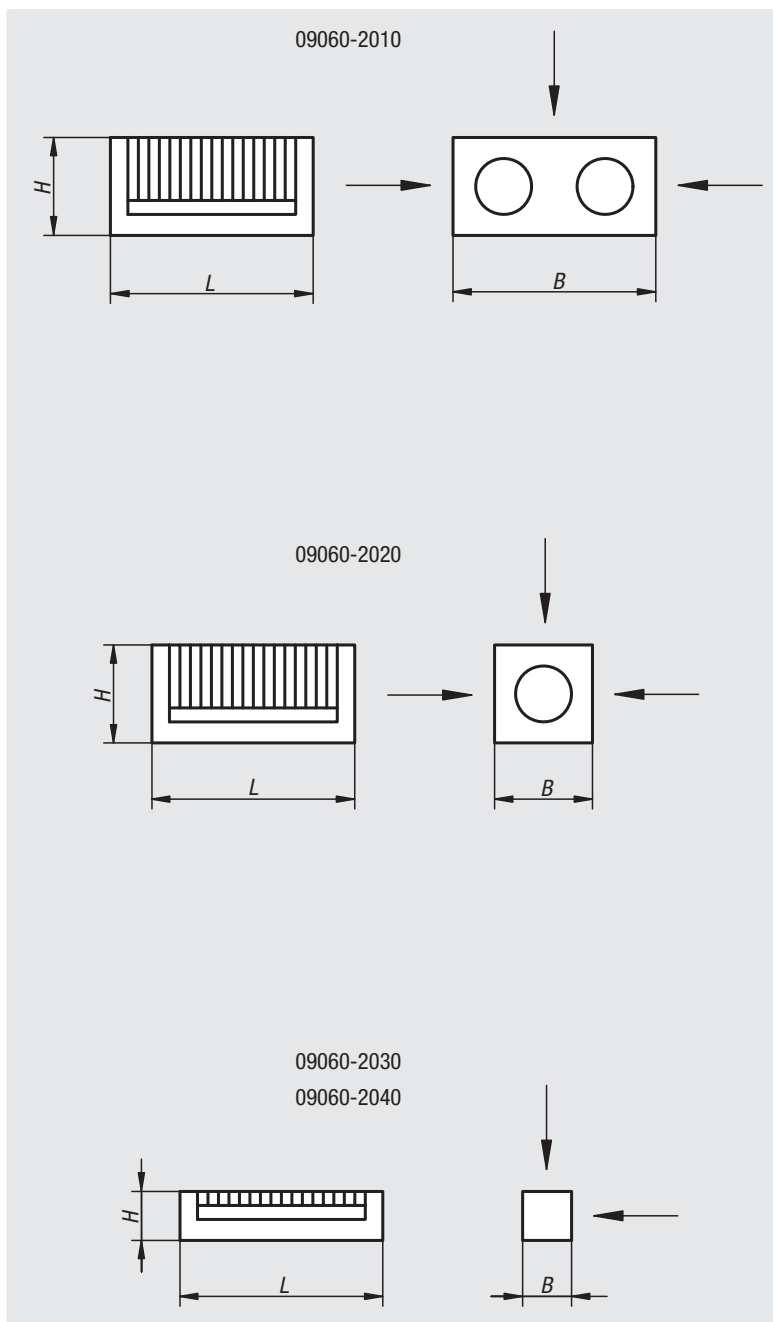
Sample order:
nlm 09060-2020

Note:

The workholding magnets 09060-2010 to 09060-2030 consist of a permanent magnetic system with fine pole divisions (4 mm) which are effective on two or three faces.

To clamp extremely thin steel parts we recommend the magnet 09060-2040 with the finest pole division of 1.3 mm. The magnetic lifespan of the workholding magnets under conditions prevalent in industrial machining is unlimited.

Approximately half the height of the workholding magnets can be ground down or polished away with no significant impairment of the magnetic strength.



Order No.	L	B	H	Max. angular deviation	Magnetic faces mm
09060-2010	100	100	50	10'	1 face 100x100 2 faces 100x50
09060-2020	100	50	50	10'	3 faces 100x50
09060-2030	100	25	25	10'	2 faces 100x25
09060-2040	100	25	25	10'	2 faces 100x25

Magnets deep pot

AlNiCo with fitting tolerance



Material:

Housing, steel.
Magnetic core AlNiCo.

Version:

Bright.

Sample order:

nIm 09060-01

Note:

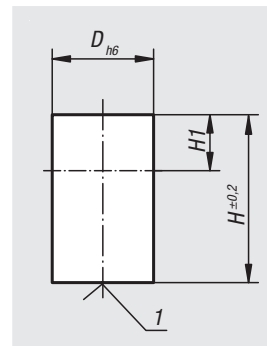
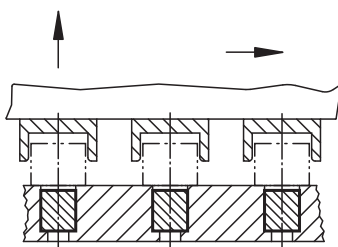
Shielded system. Diameter „D“ ground to a h6 tolerance.
Fastening possibilities by press-in, shrink-fit or gluing.
Deep pot magnets can be shortened by the dimension „H1“ with no loss of magnetic force.

Temperature range:

max. 450°C.

Drawing reference:

1) magnetic face



Order No.	D	H	H1	Magnetic force N
09060-01	6	10	2	1,5
09060-02	8	12	3	3,5
09060-03	10	16	6	7
09060-04	13	18	7	10
09060-05	16	20	5	18
09060-06	20	25	6	42
09060-07	25	30	5	96
09060-08	32	35	3	180
09060-09	40	45	5	240
09060-10	50	50	2	420

Magnets deep pot

AlNiCo without fitting tolerance



Material:

Housing, steel.
Magnetic core AlNiCo.

Version:

Electro zinc-plated.

Sample order:

nIm 09061-01

Note:

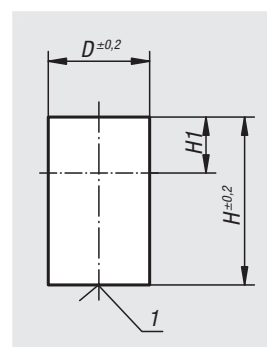
Shielded system. Diameter „D“ without fitting tolerance.
Fastening possibilities are press-in, shrink-fitting or gluing.
Deep pot magnets can be shortened by the dimension „H1“ with no loss of magnetic force.

Temperature range:

max. 450°C.

Drawing reference:

1) magnetic face



Order No.	D	H	H1	Magnetic force N
09061-01	6	20	12	1,5
09061-02	8	20	11	3,5
09061-03	10	20	10	7
09061-04	13	20	9	10
09061-05	16	20	5	18
09061-06	20	25	6	42
09061-07	25	35	10	96
09061-08	32	40	8	180
09061-09	40	50	10	240