

## Drill bush clamps

DIN 173-1

**Material:**

Bush clamp 1.0711.  
Cap screw steel.

**Version:**

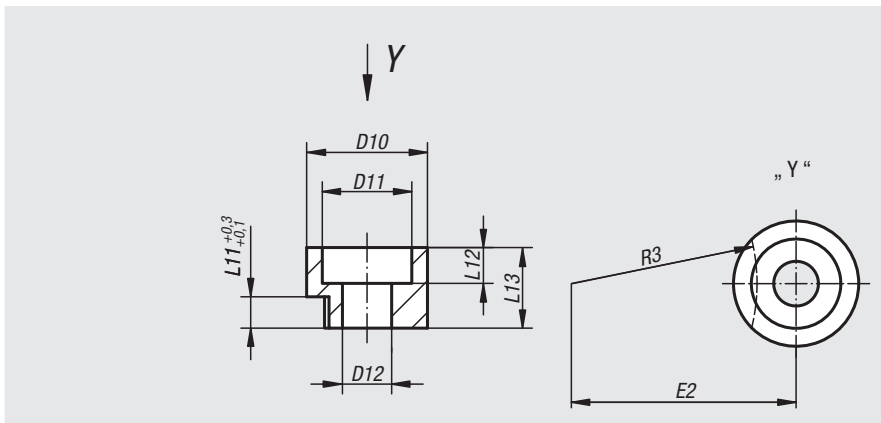
Clamping bush, black oxidised.  
Cap screw, electro zinc-plated.

**Sample order:**

nIm 08926-061X10  
(clamping bush D12= 6.1 mm and L13 = 10 mm)

**Note:**

DIN 912 cap screws are supplied.  
The clamping bush 08926-081X12 is left bright.



Order No.	D12	for drill bushes (D1)	D10	D11	L11	L12	L13	E2	R3	Socket head screw DIN 912
08926-051X08	5,1	≤6,0	13	10	3	4	8	13,2	9,5	M5x16
08926-061X10	6,1	> 6,0 ≤ 12,0	16	12	4	5	10	19,7	15	M6x20
08926-081X12	8,1	> 12,0 ≤ 30,0	20	15	5,5	5	12	36,2	30	M8x25

## Shoulder screws flathead

for DIN 173 drill bushes

**Material:**

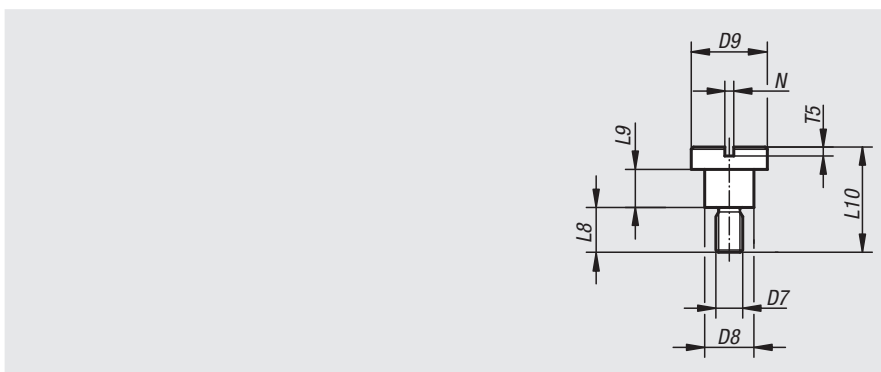
Steel.

**Version:**

Bright, grade 10.9

**Sample order:**

nIm 08927-06X04  
(DIN 173-1 screw D7 = M6 and L9 = 4 mm)



Order No.	Product type	D7	for drill bushes (D1)	L8	L9	L10	D8	D9	N	T5
08927-05X03	short	M5	≤6.0	9	3	15	7,5	13	1,6	2
08927-06X04	short	M6	> 6,0 ≤ 12,0	10	4	18	9,5	16	2	2,5
08927-08X55	short	M8	> 12,0 ≤ 30,0	11,5	5,5	22	12	20	2,5	3
08927-05X06	long	M5	≤6.0	9	6	18	7,5	13	1,6	2
08927-06X08	long	M6	> 6,0 ≤ 12,0	10	8	22	9,5	16	2	2,5
08927-08X105	long	M8	> 12,0 ≤ 30,0	11,5	10,5	27	12	20	2,5	3