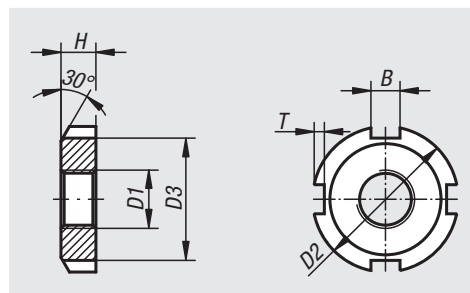


Slotted round nuts, steel or stainless steel,

DIN 981

**Material:**

Steel 1.0503.

Stainless steel 1.4301.

Version:

Stainless steel, bright.

Steel, bright.

Steel electro zinc-plated.

Sample order:

nlm 07590-01-0012

Note:

The slotted round nuts are mainly used to fasten bearings to a shaft.

The slotted round nuts can also be used to secure gear wheels, pulleys and other machine components.

Order No. steel bright	Order No. steel galvanised	D1	D2	D3	H	B=slot width	T
07590-01-0010	07590-01-010	M10x0,75	18	13,5	4	3	2
07590-01-0012	07590-01-012	M12x1	22	17	4	3	2
07590-01-0015	07590-01-015	M15X1	25	21	5	4	2
07590-01-0017	07590-01-017	M17x1	28	24	5	4	2
07590-01-0020	07590-01-020	M20X1	32	26	6	4	2
07590-01-0025	07590-01-025	M25X1,5	38	32	7	5	2
07590-01-0030	07590-01-030	M30x1,5	45	38	7	5	2
07590-01-0035	07590-01-035	M35x1,5	52	44	8	5	2
07590-01-0040	07590-01-040	M40x1,5	58	50	9	6	2,5
07590-01-0045	07590-01-045	M45x1,5	65	56	10	6	2,5
07590-01-0050	07590-01-050	M50x1,5	70	61	11	6	2,5
07590-01-0055	07590-01-055	M55x2	75	67	11	7	3
07590-01-0060	07590-01-060	M60x2	80	73	11	7	3
07590-01-0065	07590-01-065	M65x2	85	79	12	7	3
07590-01-0070	07590-01-070	M70x2	92	85	12	8	3,5
07590-01-0075	07590-01-075	M75x2	98	90	13	8	3,5
07590-01-0080	07590-01-080	M80x2	105	95	15	8	3,5
07590-01-0085	07590-01-085	M85x2	110	102	15	8	3,5
07590-01-0090	07590-01-090	M90x2	120	108	16	10	4
07590-01-0095	07590-01-095	M95x2	125	110	17	10	4
07590-01-0100	07590-01-100	M100x2	130	120	18	10	4

Slotted round nuts, steel or stainless steel,

DIN 981



Order No.	Main material	D1	D2	D3	H	B=slot width	T
07590-01-1010	stainless steel	M10x0,75	18	13,5	4	3	2
07590-01-1012	stainless steel	M12x1	22	17	4	3	2
07590-01-1015	stainless steel	M15X1	25	21	5	4	2
07590-01-1017	stainless steel	M17x1	28	24	5	4	2
07590-01-1020	stainless steel	M20X1	32	26	6	4	2
07590-01-1025	stainless steel	M25X1,5	38	32	7	5	2
07590-01-1030	stainless steel	M30x1,5	45	38	7	5	2
07590-01-1035	stainless steel	M35x1,5	52	44	8	5	2
07590-01-1040	stainless steel	M40x1,5	58	50	9	6	2,5
07590-01-1045	stainless steel	M45x1,5	65	56	10	6	2,5
07590-01-1050	stainless steel	M50x1,5	70	61	11	6	2,5
07590-01-1055	stainless steel	M55x2	75	67	11	7	3
07590-01-1060	stainless steel	M60x2	80	73	11	7	3
07590-01-1065	stainless steel	M65x2	85	79	12	7	3
07590-01-1070	stainless steel	M70x2	92	85	12	8	3,5
07590-01-1075	stainless steel	M75x2	98	90	13	8	3,5
07590-01-1080	stainless steel	M80x2	105	95	15	8	3,5
07590-01-1085	stainless steel	M85x2	110	102	15	8	3,5
07590-01-1090	stainless steel	M90x2	120	108	16	10	4
07590-01-1095	stainless steel	M95x2	125	110	17	10	4
07590-01-1100	stainless steel	M100x2	130	120	18	10	4