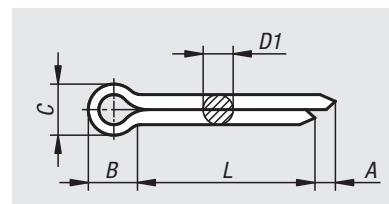
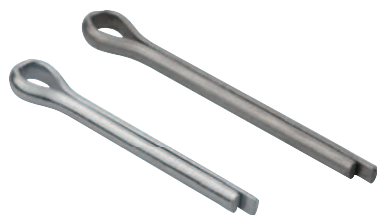


Split pins

EN ISO 1234



Material:

Steel or stainless steel 1.4310.

Version:

Steel electro zinc-plated.
Stainless steel bright.

Sample order:

nIm 07336-1010X10 (include length L)

Note:

Split pins are used in machine construction and automotive engineering as retaining elements. They are often used for securing castle nuts. After the split pin is pushed through a hole, the ends are bent over to ensure a secure lock.

The split pin can be shortened. As a rule, the split pin should be roughly double the length of the hole.

As the material structure can weaken through bending and straightening, the split pins should not be reused after they have been removed from the hole.

Order No.	Main material	Hole diameters	D1 max.	L	A min.	B	C max.	for screws	for screw Ø
07336-1010X	steel	1	0,9	10/12/16/20/25	0,8	3	1,8	3,5-4,5	3-4
07336-1016X	steel	1,6	1,4	12/16/20/25/32	1,25	3,2	2,8	5,5-7	5-6
07336-1020X	steel	2	1,8	10/16/20/25/32/36/40/50	1,25	4	3,6	7-9	6-8
07336-1025X	steel	2,5	2,3	20/25/32/36/40/50	1,25	5	4,6	9-11	8-9
07336-1032X	steel	3,2	2,9	16/20/25/32/36/40/50/63	1,6	6,4	5,8	11-14	9-12
07336-1040X	steel	4	3,7	20/25/32/36/40/50/63/80	2	8	7,4	14-20	12-17
07336-1050X	steel	5	4,6	25/32/36/40/50/63/80	2	10	9,2	20-27	17-23
07336-1063X	steel	6,3	5,9	32/36/40/50/63/80/100	2	12,6	11,8	27-39	23-29
07336-1080X	steel	8	7,5	50/63/80/100	2	16	15	39-56	29-44
07336-2010X	stainless steel	1	0,9	16/20	0,8	3	1,8	3,5-4,5	3-4
07336-2016X	stainless steel	1,6	1,4	12/16/20/25/32	1,25	3,2	2,8	5,5-7	5-6
07336-2020X	stainless steel	2	1,8	10/16/20/25/32/40	1,25	4	3,6	7-9	6-8
07336-2025X	stainless steel	2,5	2,3	20/25/32	1,25	5	4,6	9-11	8-9
07336-2032X	stainless steel	3,2	2,9	16/20/25/32/36/40/50/63	1,6	6,4	5,8	11-14	9-12
07336-2040X	stainless steel	4	3,7	20/25/32/40/50/63	2	8	7,4	14-20	12-17
07336-2050X	stainless steel	5	4,6	32/36/40/50/63	2	10	9,2	20-27	17-23
07336-2063X	stainless steel	6,3	5,9	36/40/50/63/80	2	12,6	11,8	27-39	23-29
07336-2080X	stainless steel	8	7,5	50/80/100	2	16	15	39-56	29-44